



**AZIMUT**  
*Grande*

For Sale: €11.000.000

2020

35.00m

**★ STARSHIP YACHTS**

24 Po Chong Wan, Shum Wan Road, Aberdeen,  
Hong Kong

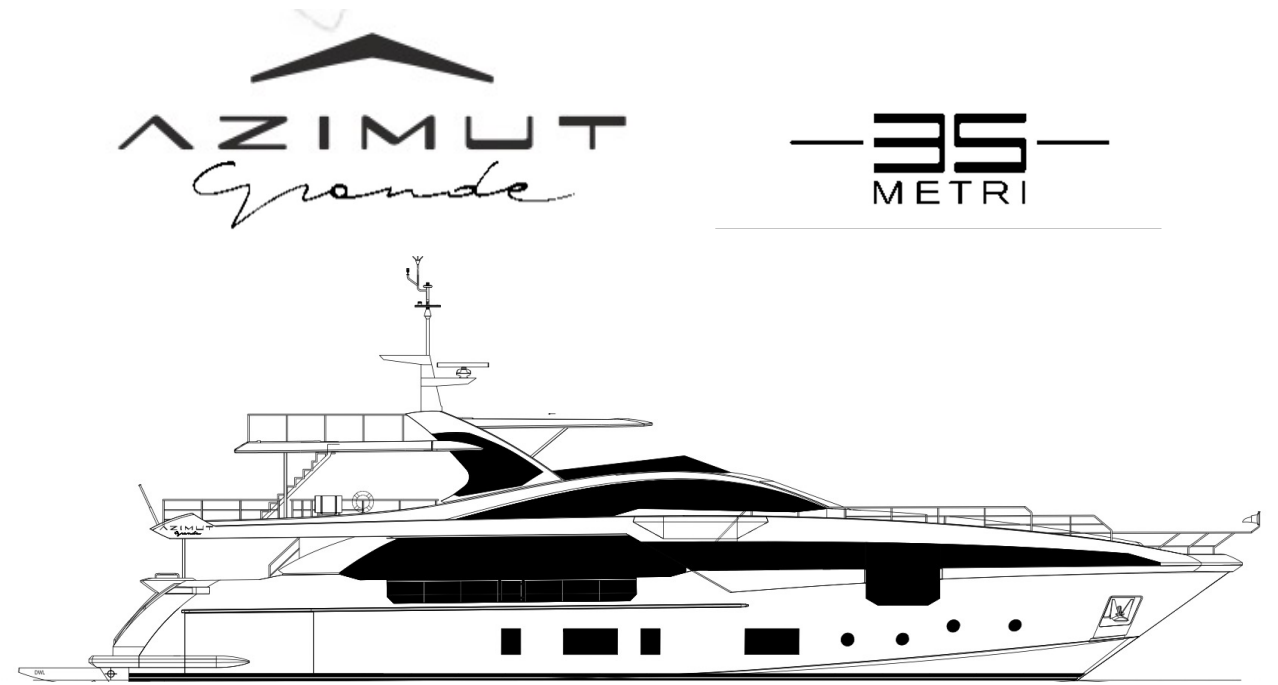
Tel: +852 2555-2805

[STARSHIPYACHTS.COM](http://STARSHIPYACHTS.COM)

[info@starshipyachts.com](mailto:info@starshipyachts.com)

## Technical Specifications

Max Speed	25 kn
Engines	2 x 2400 HP MTU 16V2000M93
Length Overall	35.17m (115'4")
Beam	7.50m (24'7")
Draft	1.91m (6'2")
Water Tank	3.000 l
Fuel Tank	18.000 l
Displacement	154 t
Cabins	5 guest cabins + 4 crew
Max Persons	12
Year Built	2020
Engine Hours	223
Generator Hours	639
Exterior Designer	Stefano Righini
Interior Designer	Achille Salvagni Architetti
C.E. Rating	Category A



AZIMUT  
*Grande*

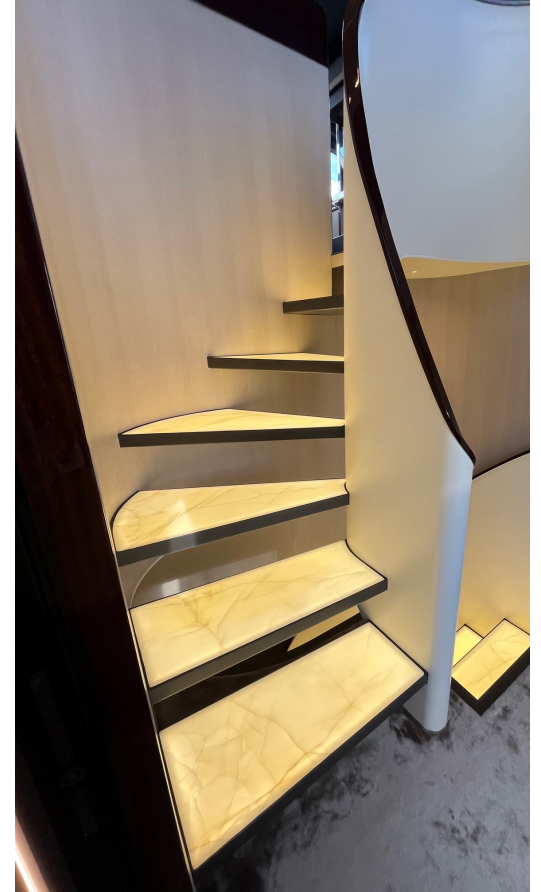
— 35 —  
METRI

**For Sale: €11.000.000**

AZIMUT *Grande* — 35 —  
METRI













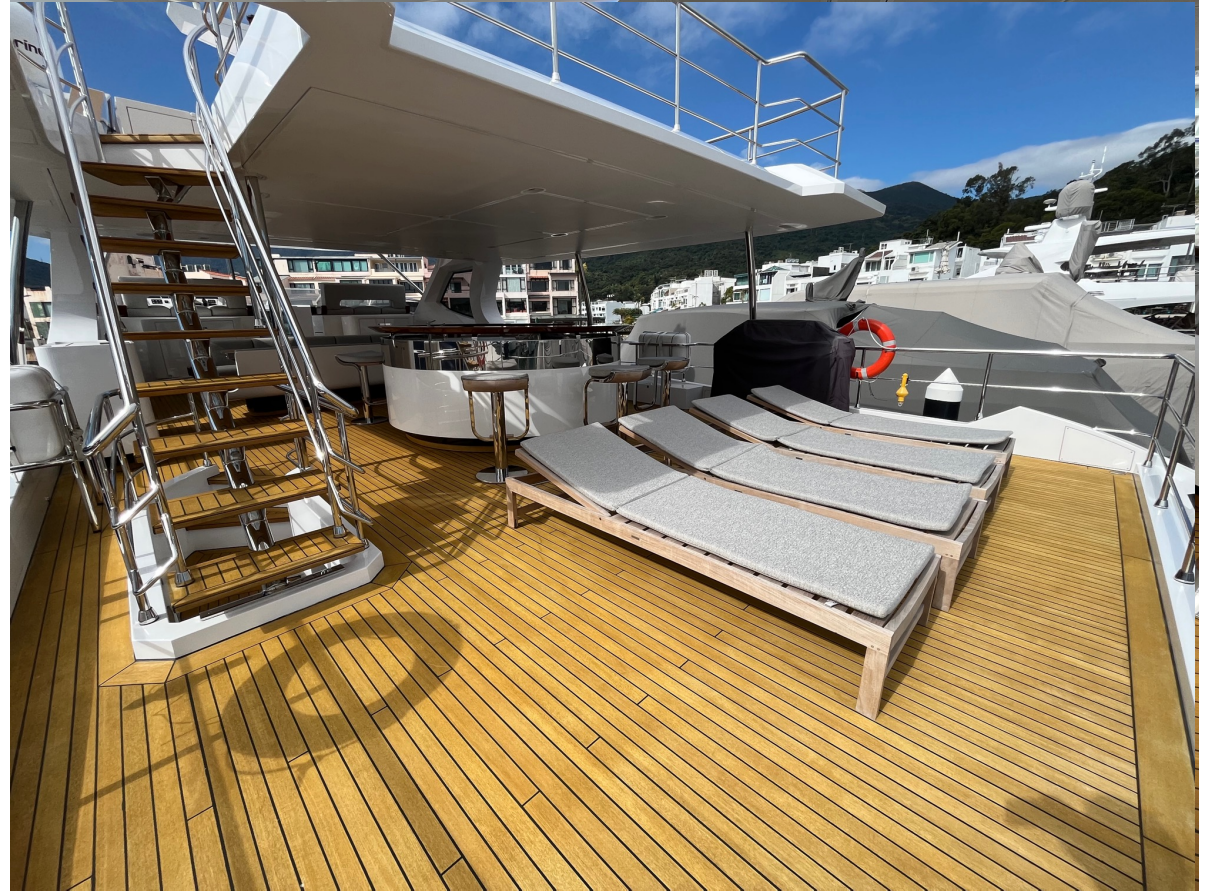


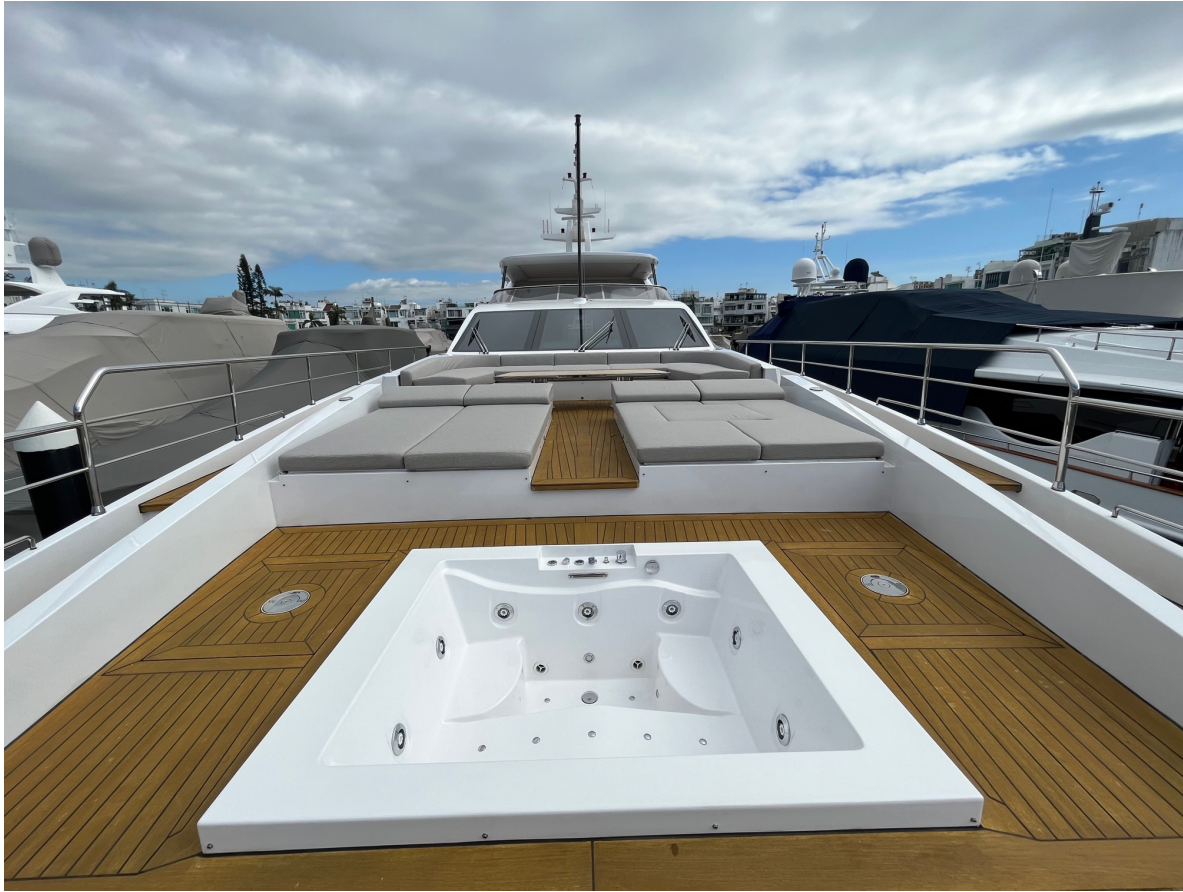














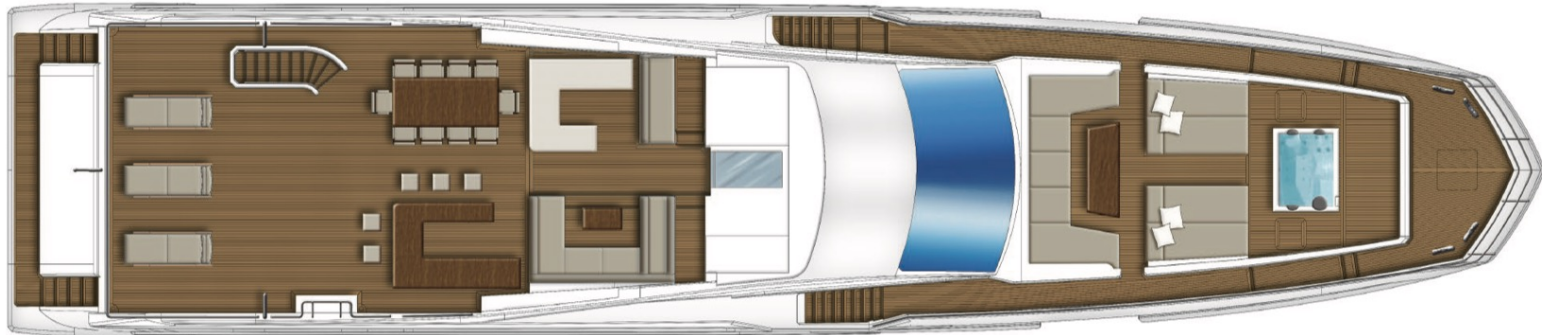




EXTERIOR & INTERIOR LAYOUT

AZIMUT  
*Grande*

— 35 —  
METRI



EQUIPMENT

AZIMUT  
*Grande*

— 35 —  
METRI

- Construction to RINA Class for Pleasure Yachts
- Fin "Zero Speed" Electric Stabilisers
- Additional Sundeck in lieu of std aft hardtop, inc bar - sink, icemaker & fridge, 2 seat & 3 seat sofa & 4 x chaise longue.
- Master Cabin Balcony at Portside with automatic handrails integrated in the mechanism
- Saloon - Cockpit electric opening door in lieu of standard
- Upgrade standard generators to Kohler 70 kW/50 Hz x 2
- ASEA Converter
- Automatic parallel connection between generators
- Dimmers for external lights (cockpit and flybridge)
- AIS - Vessel ID and safety system
- Upgraded navigation package Furuno Platinum
- Fixed video cameras in cockpit ceiling & zooming/pivoting video camera in engine room connected to helm nav displays STV 60
- Satellite TV with Raymarine dummy dome with decoders
- Upgraded Audio/Video package Platinum
- Electric stern thruster
- Additional pair of midship cleats with fairleads
- LED striplight under aft cockpit sofa
- 6 x Underwater lights under swim platform
- LUMISHORE TIX802 SUPRA
- Removeable sun awning for bow sitting area, with poles in carbon fibre and three awnings
- Beach area as 35-18 with Fridge and freezer
- Teak flooring on all flybridge - 12 mm.
- 2 x bidet in his/hers master cabin toilets
- Central vacuum cleaning system
- Double Racor fuel filters for generators
- Additional soundproof insulation between salon and engine room (one layer of Mapflex 3 mm.)
- Additional soundproof insulation in master cabin – aft bulkhead and ceiling (one layer of Mapflex 3 mm.)
- Upgraded AC in Saloon "Gulf Version"
- Statuario marble in lieu of standard mable for all washrooms - sink tops, sinks & shower walls where applicable



24 Po Chong Wan, Shum Wan Road, Aberdeen, Hong Kong  
Tel: +852 2555-2805  
STARSHIPYACHTS.COM  
[info@starshipyachts.com](mailto:info@starshipyachts.com)