



CLOUD 9



CLOUD 9



Asking price

EUR 155,000,000

Length

88.5m (290.3ft)

Beam

14.2m (46.6ft)

Cruising speed

13 knots

Maximum speed

20 knots

Range

6,700 nm

Class

Lloyds Register ⌘ 100 A1 SSC Yacht (P) MONO G6 ⌘ LMC UMS MCA

Construction

Hull - Steel, Superstructure - Aluminium, Deck - Teak

Crew

26

Guests

14

Engines

2 × 4,838hp MTU

Built

2015, Oceanco, The Netherlands

Draft

4m (13.1ft)

Gross Tonnage

2,914

Flag

Cayman Islands

Lying

West Mediterranean

Exterior Designer

Espen Oeino

Interior Designer

Sinot Exclusive Yacht Design/David Kleinberg Design Ass.

Notes

Not available for sale to US residents while in US waters

CLOUD 9

About CLOUD 9

The 88.5m (290.3ft) motor yacht CLOUD 9 has a steel hull and aluminium superstructure constructed to Lloyd's classification and MCA compliance by Dutch master shipyard Oceanco and delivered in 2015. Her exterior lines are by Espen Oeino's Monaco studio and her contemporary interiors are by multi-award-winning Dutch designers Sinot Exclusive Yacht Design, confirming her exceptional northern European credentials and state-of-the-art specification.

Currently a highly prized charter yacht, CLOUD 9 has exceptional outside guest spaces. These include the main deck aft, which has a 5m-diameter (16.5ft) circular pool as its focus surrounded by sun loungers, a sit-up wet bar, casual seating in sun or shade and flip-down TVs. Steps either side lead down to a large swim platform for bathing and use of tenders and toys and inside on the main deck there is a saloon with two convivial lounge areas and wellness centre with beauty salon, massage room/hospital and fully equipped gym. An elevator runs from main to bridge decks.

The upper deck is about entertainment with a large convivial lounge that converts into a cinema, dining spaces inside and outside, the latter sheltered by retractable glass screens, a sun lounge aft and dayhead off the lobby. The bridge deck is also well suited to entertainment with a media lounge, sit-up bar, dayhead and another outside dining space aft. Walkaround sidedecks lead forward to intimate sofa seating ahead of the bridge. Up on the sun deck there is a third informal dining area with an al fresco bar and buffet with café seating and bar stools forward. Aft is a pool with sun pads either side and a sun lounge area while inside is an L-shaped lounge with flip-down TV and a dayhead.

She welcomes 14 guests in seven suites. Her huge owner's apartment, forward on the upper deck, features an island double-berth bedroom with wraparound views, overlooking the owner's private lounge, jacuzzi and the foredeck's 4,800kg-capable helipad. Aft of the bedroom are his and hers bathrooms, both with bath, shower and en suite walk-in dressing room. There is also a private office and a TV lounge. The rest of her accommodation, two VIP suites, three double suites and one twin suite, is forward on the main deck. She also sleeps up to 26 crew.

Twin 4,838hp MTU diesel engines give her a top speed of 20 knots, she cruises comfortably at 16 knots and has a range of 6,700nm at her passage speed of 13 knots. A lower deck tender garage accommodates three tenders of up to 11.5m (37.7ft) and various toys, launched through large shell doors either side. Further toy stowage can be found beneath the foredeck, forward on the main deck.

Key features

Exceptional build quality and state-of-the-art technical specification

Exterior design by Espen Oeino and interior by Sinot

Maximum speed of 20 knots with a comfortable cruising speed of 16 knots

Range of 6,700 nm

Impressive Owner's suite featuring separate office, sitting room, his and her bathrooms, his and her dressing rooms, and direct access to owner's private exterior lounging area and jacuzzi forward

Six further guest staterooms on the main deck

Large and well-appointed gym

Tenders

11.4m Hodgdon Limo 10.8m Compass Sport Tender
8m X-Craft with Mercury Verado 300hp outboard

CLOUD 9



Main deck salon



Main deck salon

CLOUD 9



Elevator



Owner's cabin

CLOUD 9



Owner's cabin



Owner's office

CLOUD 9



Owner's office



Owner's cabin en suite

CLOUD 9



Owner's dressing room



Guest corridor

CLOUD 9



Guest double cabin



Guest double cabin

CLOUD 9



Guest twin cabin

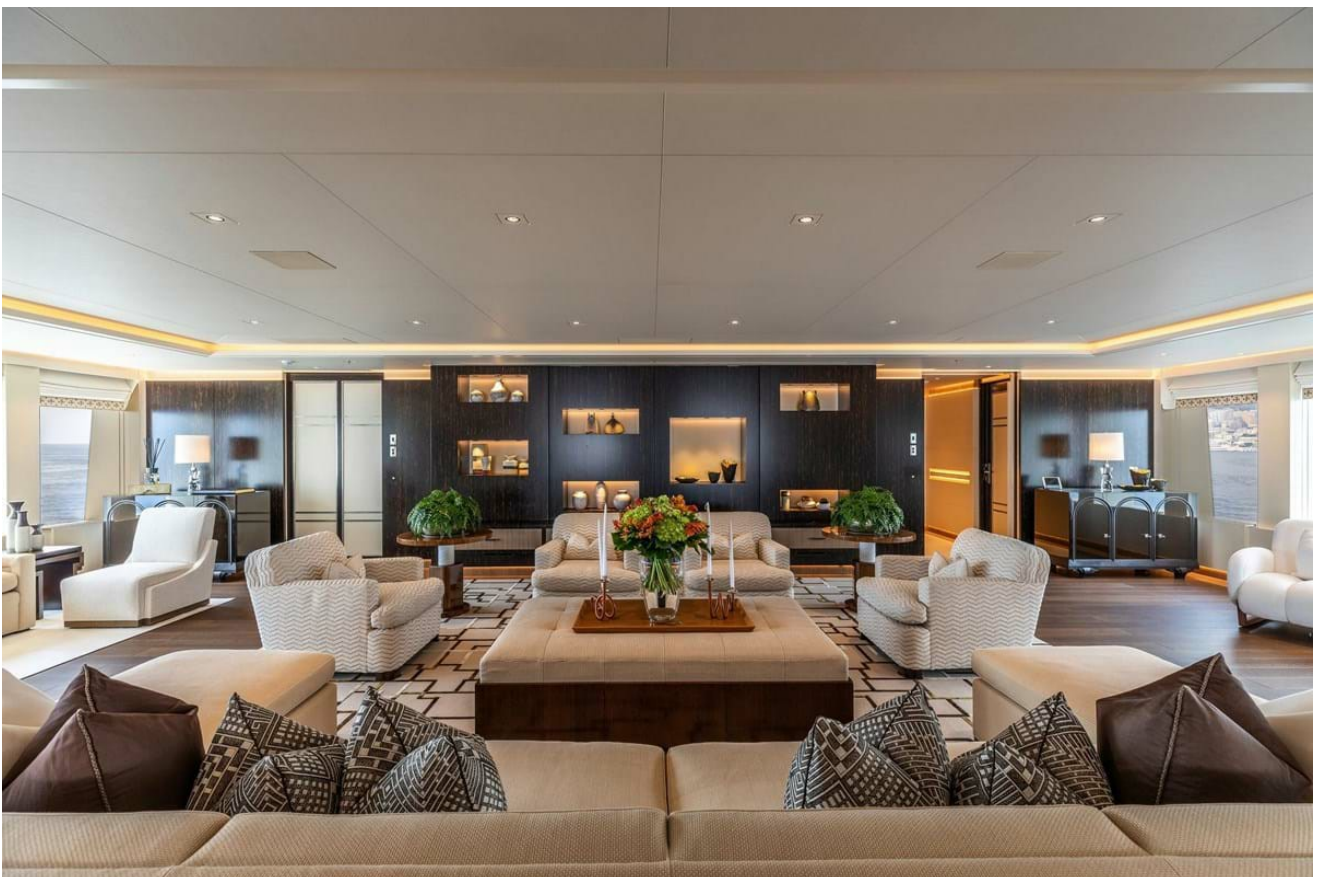


Bridge deck salon

CLOUD 9



Bridge deck salon



Upper deck lounge

CLOUD 9



Upper deck lounge



Upper deck interior dining

CLOUD 9

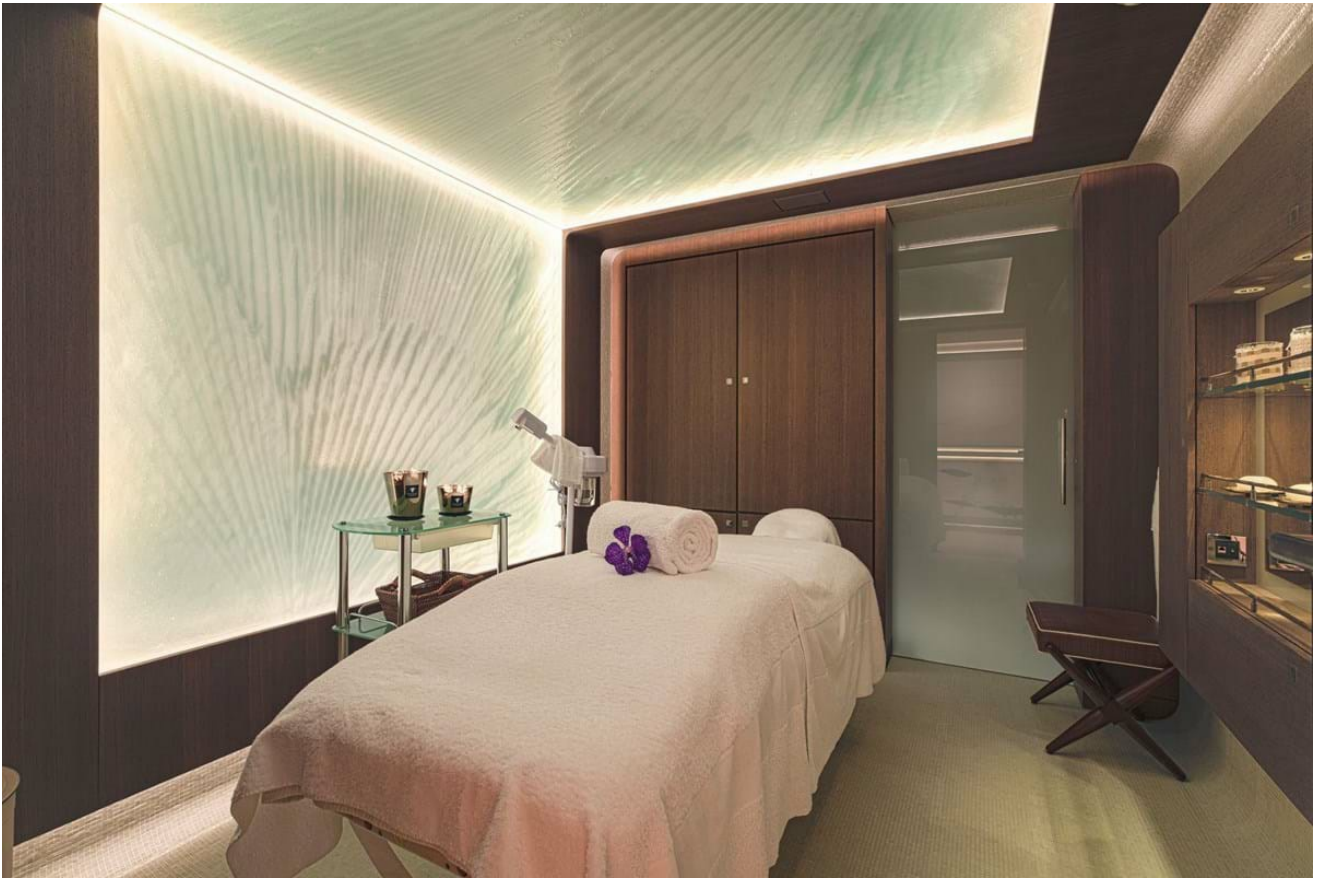


Sun deck bar



Beauty salon

CLOUD 9



Massage room



Gym

CLOUD 9



Bridge



Main deck aft pool

CLOUD 9



Main deck aft



Upper deck aft

CLOUD 9



Upper deck aft



Bridge deck aft

CLOUD 9



Sun deck fwd

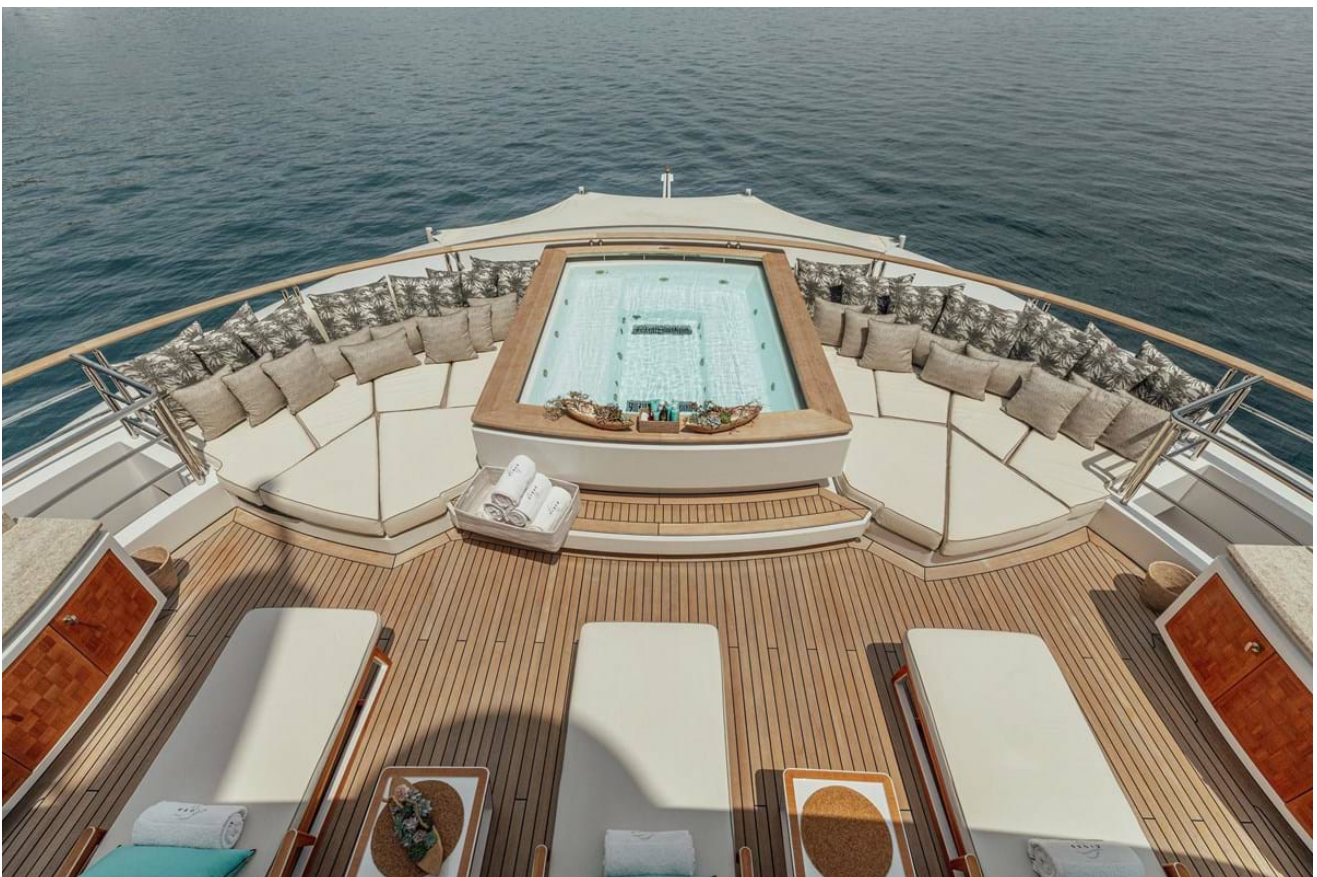


Sun deck aft

CLOUD 9



Sun deck aft jacuzzi



Sun deck aft

CLOUD 9



Beach club



Aft view

CLOUD 9



Tender



CLOUD 9

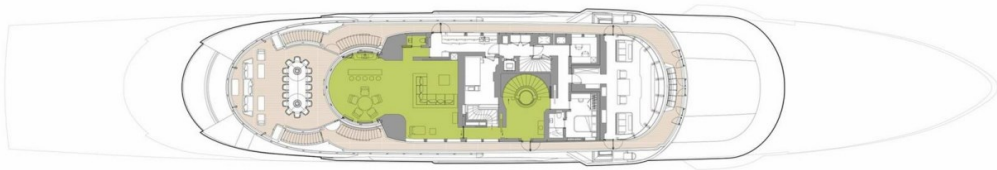
SUN DECK



■ GUEST AREAS ■ MASTER SUITE ■ VIP SUITE ■ GUEST CABINS ■ MASTER SUITE OFFICE ■ GYM ■ MASSAGE SUITE ■ BEAUTY SALON ■ JACUZZI ■ POOL

Sun deck

BRIDGE DECK



■ GUEST AREAS ■ MASTER SUITE ■ VIP SUITE ■ GUEST CABINS ■ MASTER SUITE OFFICE ■ GYM ■ MASSAGE SUITE ■ BEAUTY SALON ■ JACUZZI ■ POOL

Bridge deck

UPPER DECK



■ GUEST AREAS ■ MASTER SUITE ■ VIP SUITE ■ GUEST CABINS ■ MASTER SUITE OFFICE ■ GYM ■ MASSAGE SUITE ■ BEAUTY SALON ■ JACUZZI ■ POOL

Upper deck

MAIN DECK



■ GUEST AREAS ■ MASTER SUITE ■ VIP SUITE ■ GUEST CABINS ■ MASTER SUITE OFFICE ■ GYM ■ MASSAGE SUITE ■ BEAUTY SALON ■ JACUZZI ■ POOL

Main deck

LOWER DECK



■ GUEST AREAS ■ MASTER SUITE ■ VIP SUITE ■ GUEST CABINS ■ MASTER SUITE OFFICE ■ GYM ■ MASSAGE SUITE ■ BEAUTY SALON ■ JACUZZI ■ POOL

Lower deck

BOTTOM DECK



■ GUEST AREAS ■ MASTER SUITE ■ VIP SUITE ■ GUEST CABINS ■ MASTER SUITE OFFICE ■ GYM ■ MASSAGE SUITE ■ BEAUTY SALON ■ JACUZZI ■ POOL

Bottom deck



INFO@STARSHIPYACHTS.COM • WWW.STARSHIPYACHTS.COM
+852 2555-2805 • 24 PO CHONG WAN, SHUM WAN RD. ABERDEEN - HK