



## **Ferretti Yachts 650**

65ft | Ferretti Yachts | 2016

**For Sale: HKD 9.800.000**



24 Po Chong Wan, Shum Wan Road, Aberdeen,  
Hong Kong

Tel: +852 2555-2805

[STARSHIPYACHTS.COM](http://STARSHIPYACHTS.COM)

[info@starshipyachts.com](mailto:info@starshipyachts.com)



## **ABOUT**

This 2016 Ferretti Yachts 650 is comprised of 3 staterooms, comfortably accommodating 6 guests overnight. The open floor plan allows for complete comfort whilst onboard ensuring that her interior and exterior are functional yet stylish.

## **Ferretti Yachts 650**

3 staterooms | 18 pax | 2016

<b>Max Speed</b>	30 Kn
<b>Engines</b>	2 x CAT C18
<b>Length Overall</b>	19.67m (64.5ft)
<b>Beam</b>	5.25m (17.22ft)
<b>Person Capacity</b>	18 pax
<b>Displacement</b>	40,899 kg
<b>Cabins</b>	3 + 1 (crew)

**For Sale: HKD 9.800.000**

24 Po Chong Wan, Shum Wan Road, Aberdeen, Hong Kong

Tel: +852 2555-2805

STARSHIPYACHTS.COM

[info@starshipyachts.com](mailto:info@starshipyachts.com)



**AFT MAIN DECK**





24 Po Chong Wan, Shum Wan Road, Aberdeen, Hong Kong

Tel: +852 2555-2805

[STARSHIPYACHTS.COM](http://STARSHIPYACHTS.COM)

[info@starshipyachts.com](mailto:info@starshipyachts.com)



**MAIN DECK LIVING ROOM**





**MAIN DECK GALLEY & HELM STATION**





**LOWER DECK GUEST & VIP CABIN**





**LOWER DECK MASTER CABIN**







**LOWER DECK ENGINE ROOM**





## PROVISIONAL TECHNICAL SPECIFICATIONS

<b>Model</b>	Ferretti Yachts 650
<b>Manufacturing Year</b>	2016
<b>Length Overall</b>	19.67m (64.5ft)
<b>Max Beam</b>	5.25m (17.22ft)
<b>Displacement</b>	40,899 KG
<b>Engine</b>	2 x CAT C18 – 1150 (2 x 1150 hp)
<b>Engine Type</b>	Diesel
<b>Engine Hours</b>	660
<b>Generator</b>	ONAN 19kw
<b>Generator Hours</b>	2,830
<b>Person Capacity</b>	18 pax
<b>Fuel Tank Capacity</b>	3,700 lt
<b>Water Tank Capacity</b>	530 lt

*Outline specification believed to be correct but not to be taken contractually*

24 Po Chong Wan, Shum Wan Road, Aberdeen, Hong Kong

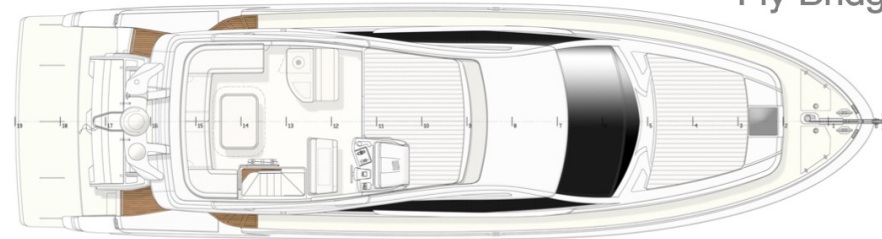
Tel: +852 2555-2805

STARSHIPYACHTS.COM

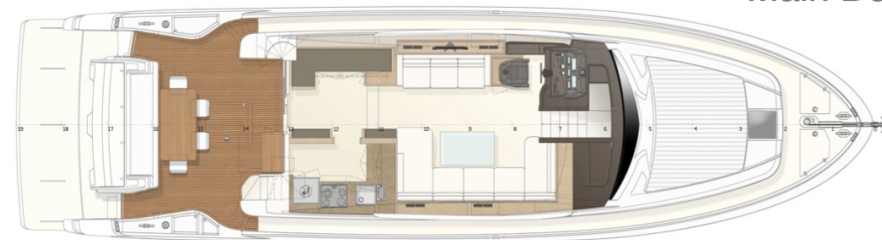
[info@starshipyachts.com](mailto:info@starshipyachts.com)



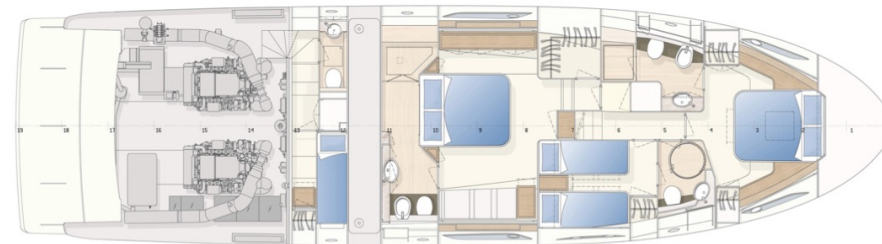
# LAYOUT



Fly Bridge



Main Deck



Lower Deck

*Outline specification believed to be correct but not to be taken contractually*



## ACCESSORIES

### Electronics & Navigation Equipment:

SIMRAD radar plotter rep. on fly helm 12" diff from STD  
GPS  
VHF  
Radar  
Compass  
Generator ONAN 19 kw upgrade diff from 9.6 kw STD  
Tropicalised Air Conditioning (Salon, Cabins + 1 crew)  
Bow Thruster 10.7HP (double propeller)

### Exterior Equipment:

Mooring winch  
Underwater lights  
Lighting for stair to cabins  
Digital chain counter  
Refrigerator on flybridge 50 liters  
Concealed electrohydraulic gangway  
Hard-Top

### Interior Equipment:

Black water system with holding tank  
Grey water system with tank  
Bottle cooler drawer in salon  
Washing machine/dryer 5 kg  
Dishwasher 6 covers  
Wooden floor salon/entrance/galley  
TV 40" LCD/LED thin in salon – diff from STD  
Electric device for TV 40" in salon  
Predisposition antenna TV SAT  
TV 22" LCD/LED in master cabin  
HI FI CD/DVD F700 in master cabin  
Salon sofa diff from STD  
Curtain in cabins diff from STD  
Carpet in lower deck

*Outline specification believed to be correct but not to be taken contractually*

24 Po Chong Wan, Shum Wan Road, Aberdeen, Hong Kong

Tel: +852 2555-2805

STARSHIPYACHTS.COM

[info@starshipyachts.com](mailto:info@starshipyachts.com)