



O'PTASIA



O'PTASIA



Asking price

EUR 89,999,000

Built

2018, Golden Yachts, Greece

Length

85m (278.8ft)

Beam

13.8m (45.3ft)

Draft

3.6m (11.8ft)

Gross Tonnage

2,350

Cruising speed

17 knots

Maximum speed

18 knots

Range

10,015 nm

Flag

Malta

Lying

East Mediterranean

Class

Bureau Veritas

Exterior Designer

Studio Vafiadis

Interior Designer

Giorgio Vafiadis

Construction

Hull - Steel, Superstructure - Aluminium, Deck - Teak

Crew

30

Guests

23

Cabins

10 cabins (8 × double, 2 × twin, 3 × additional berths)

Engines

2 × 3,386hp Caterpillar

Propulsion

Twin screw diesel yacht

About O'PTASIA

Measuring in at a magnificent 85m (278.8ft) in length and with 2,342 gross tons of volume, O'PTASIA is one of the largest and most advanced yachts built by the Greek shipyard, Golden Yachts. Working hand in hand with Italian-based designer Giorgio Vafiadis of Studio Vafiadis, the owner, who runs a successful yacht charter fleet as well as having varied interests in commercial shipping, has created a yacht designed for active living and pure, unadulterated comfort.

Sophisticated styling plus a host of entertainment options both on and off the water make her ideal for large family gatherings or impressive entertainment. Extensive deck spaces play host to a wide range of amenities including an enormous beach club and spa/wellness centre on the lower deck, a large pool flanked by sunpads and a fully equipped gym on the bridge deck, multiple alfresco dining options, and sunbathing areas on all aft decks. A touch and go helipad is located on the foredeck for convenient access and can be converted to an observation platform or games area.

Styled as contemporary with Art Deco influences, O'PTASIA's interior features a blend of dark woods, paired with a light colour palette that evokes a sense of calm. The large, open plan main saloon hosts two seating areas and a separate dining area forward, while the upper deck saloon features a comfortable lounging area and bar.

Accommodating up to 23 guests in 10 cabins, O'PTASIA's master suite is located on the upper deck forward and offers 180-degree views from the master cabin. The upper deck also hosts two double cabins and a twin cabin. The full-beam VIP suite is located forward on the main deck with a private lounge area and his and hers walk-in wardrobes. Four more double cabins (two of which are convertible to twin cabins) and one twin cabin can also be found on this deck. A guest elevator provides access between the lower deck to the bridge deck, as does the magnificent staircase, thus allowing guests to move about with ease.

Powered by twin 3,386hp Caterpillar diesel engines, O'PTASIA has a top speed of 20 knots, a cruising speed of 16 knots and a maximum range of 10,015nm. Her zero speed stabiliser system ensures a smooth cruising experience, both underway and at anchor.

Key features

Designed, specified and constructed by a highly experienced multiple large yacht owner and team

Pool and outdoor cinema

Equipped with a helipad for a touch and go helicopter

Large beach club including a steam room, massage room, bar, and hydraulic ladder

Elevator serves lower to bridge decks

Enviably reputation on the charter market with many repeat guests

Winner of the International Superyacht Society award in the Power 65m+ category at the 29th annual Design & Leadership Award Gala 2019

Tenders

1 x custom Limo tender, LOA 9.75m, with 2 x Volvo Penta D3, 440HP engines. 1 x Chris Craft launch 27, LOA 8.13m, with Mercury V8 6.2L, 1 x Novurania catamaran 20, LOA 6m with Yamaha diesel outboard engine 115hp, 1 x Avon 4.40m tender with Yamaha outboard engine 60HP, 1 x Zodiac SOLAS 450 rescue boat with Yamaha outboard engine F25g SOLAS

O'PTASIA



At anchor

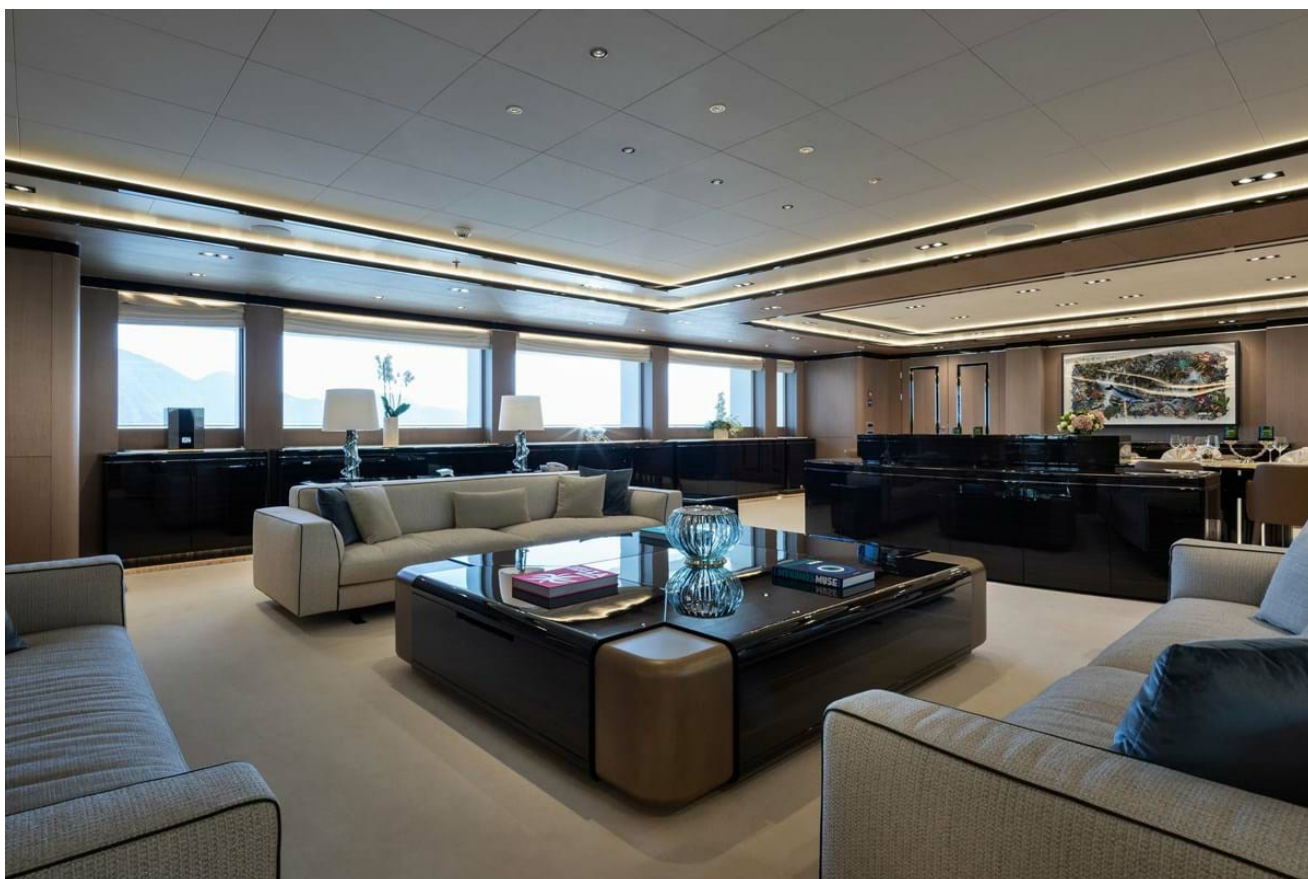


Aerial view

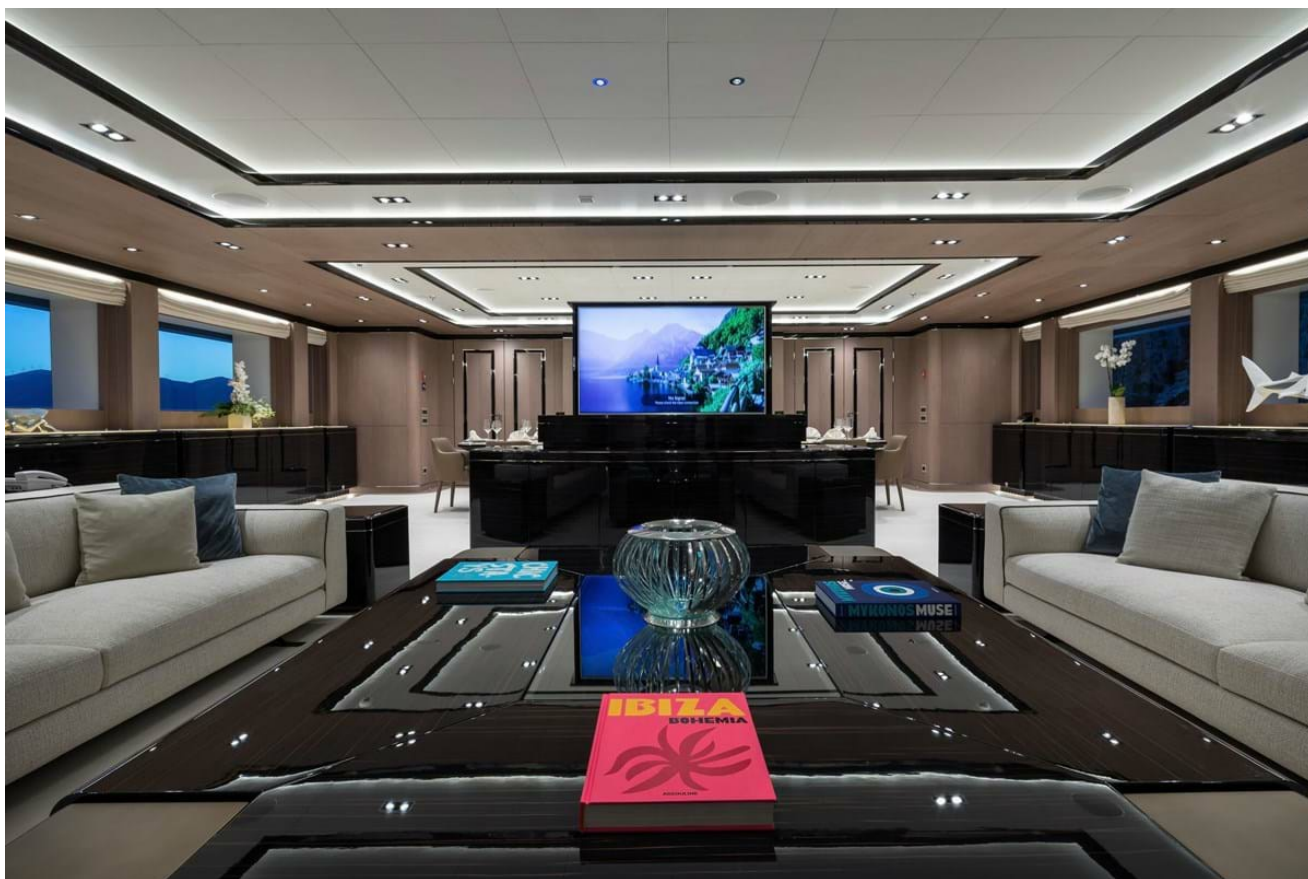
O'PTASIA



Main deck lounge



Main deck lounge



Main deck lounge



Main deck dining

O'PTASIA



Foyer



Upper deck forward owner's cabin

O'PTASIA



Upper deck forward owner's cabin



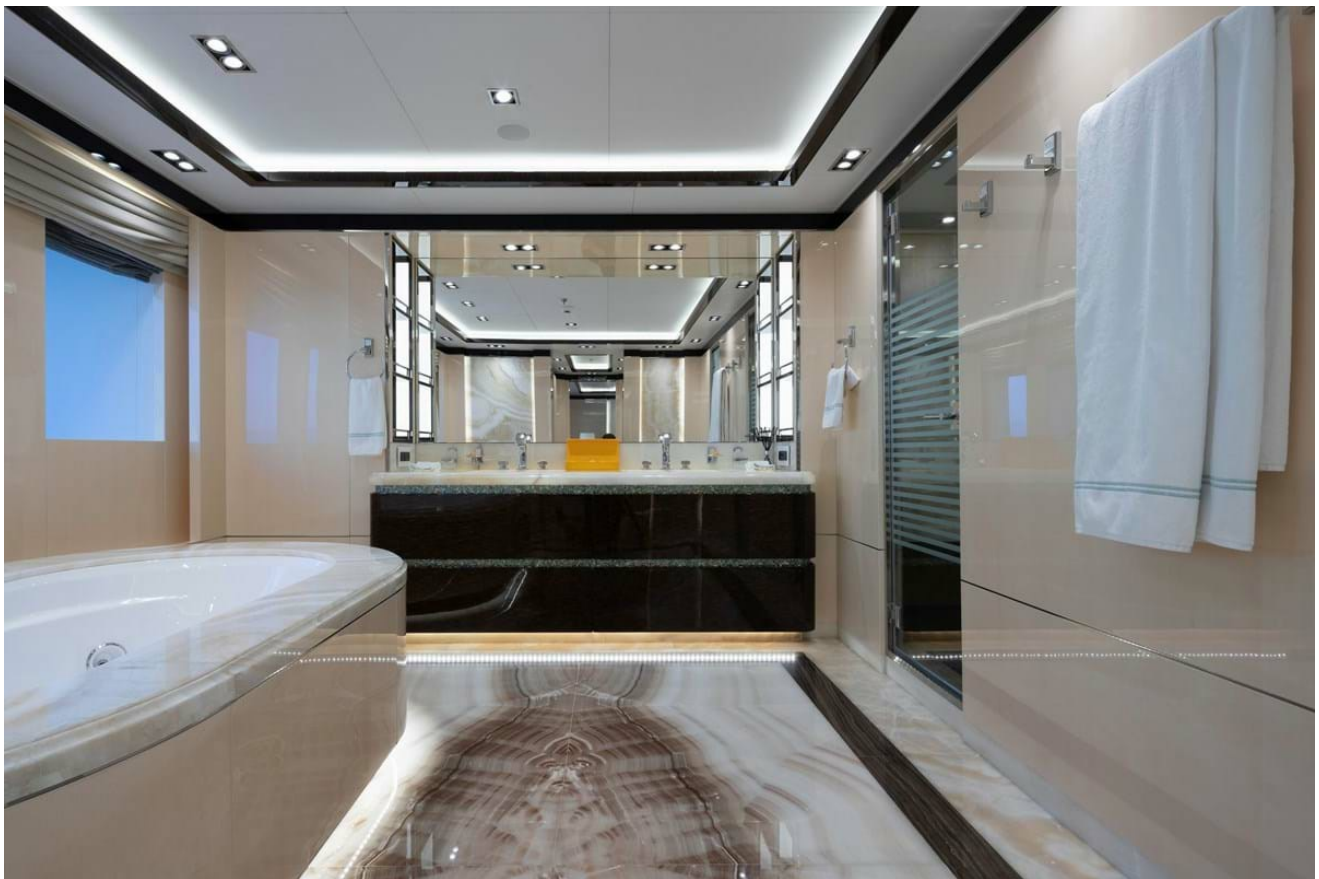
Owner's office



Owner's en suite bathroom



Main deck VIP suite



VIP en suite bathroom



Upper deck port double guest cabin



Upper deck starboard twin cabin with pullman



Main deck port double guest cabin



Main deck starboard double guest cabin



Guest en suite bathroom



Upper deck lounge



Upper deck lounge



Upper deck lounge



Bridge deck gym

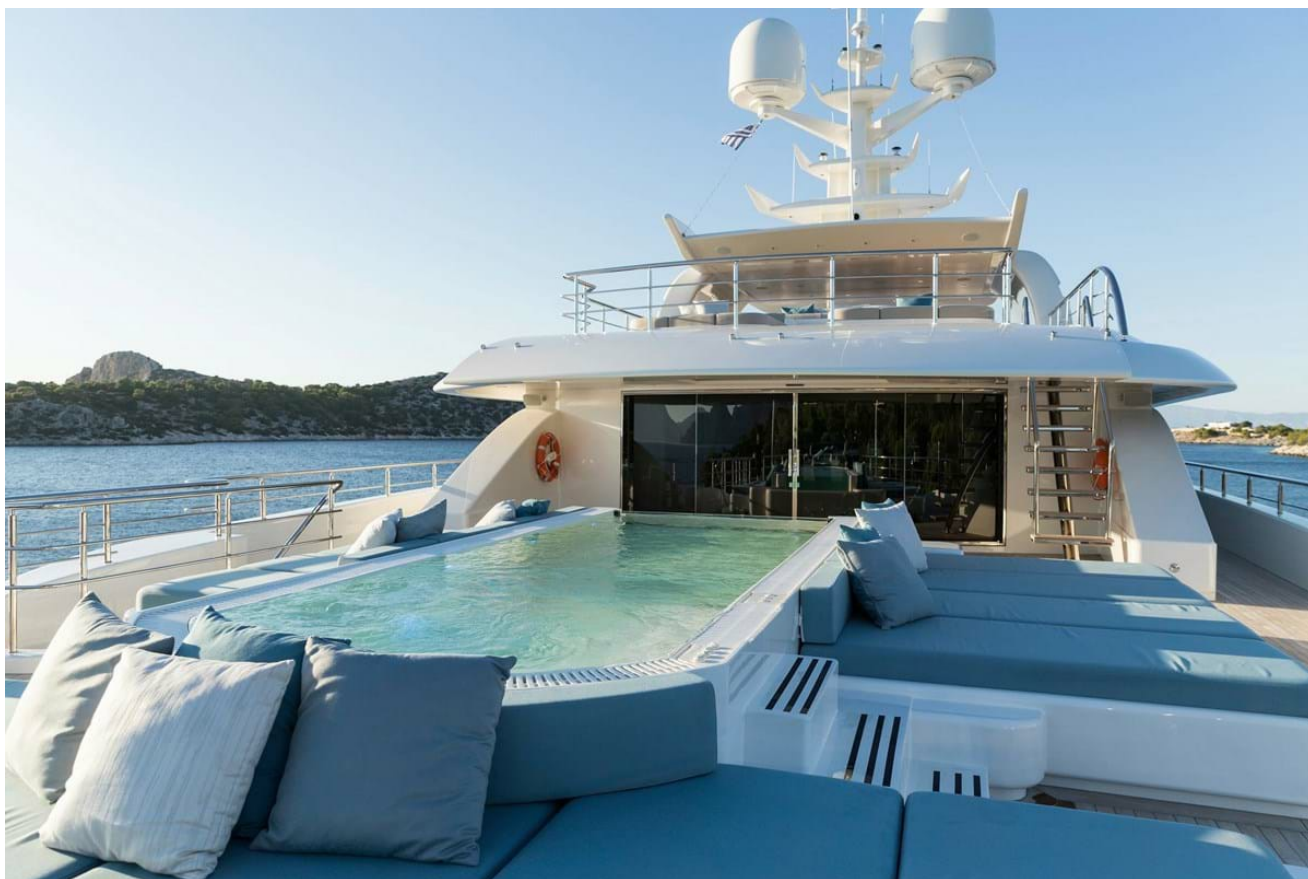
O'PTASIA



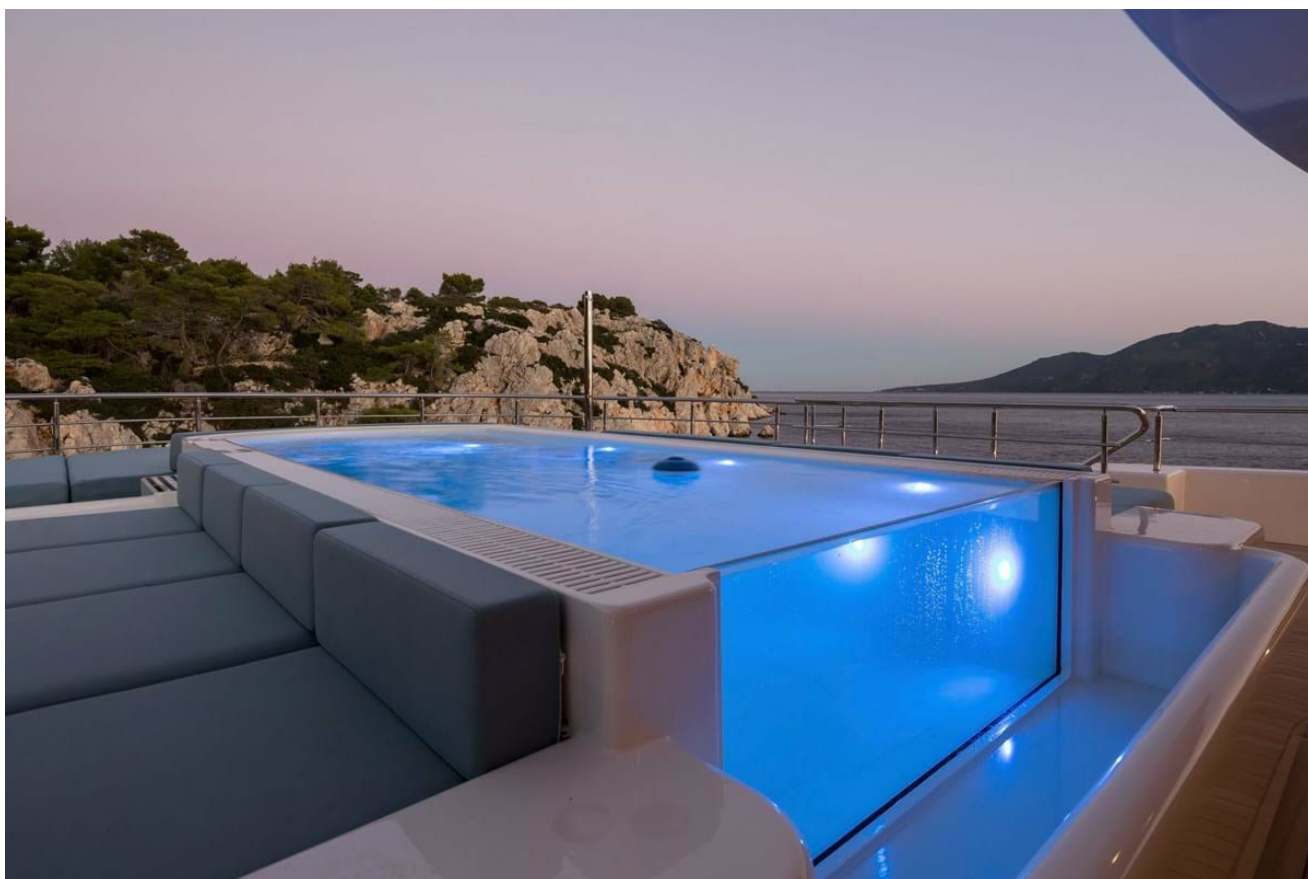
Sun deck aft sunloungers



Sun deck



Bridge deck aft pool and sun pads



Bridge deck aft pool

O'PTASIA



Bridge deck forward helipad



Upper deck aft lounge



Upper deck aft dining area



Upper deck aft dining area



Main deck aft seating area



Beach club



Beach club



Lower deck steam room



Beach club hydraulic ladder



Tender garage

O'PTASIA



Limo tender



Limo tender

O'PTASIA

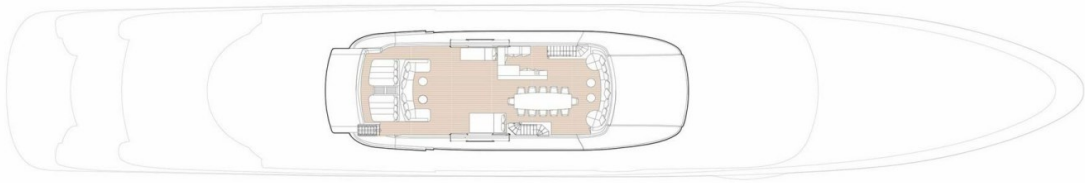


Aerial view



At anchor

FLYBRIDGE



■ GUEST AREAS ■ OWNER'S SUITE ■ VIP SUITE ■ GUEST CABINS ■ OWNER'S OFFICE ■ HOSPITAL ■ GYM ■ MASSAGE SUITE ■ HAMMAM ■ POOL

O'PTASIA flybridge

BRIDGE DECK



■ GUEST AREAS ■ OWNER'S SUITE ■ VIP SUITE ■ GUEST CABINS ■ OWNER'S OFFICE ■ HOSPITAL ■ GYM ■ MASSAGE SUITE ■ HAMMAM ■ POOL

O'PTASIA bridge deck

O'PTASIA

UPPER DECK



■ GUEST AREAS ■ OWNER'S SUITE ■ VIP SUITE ■ GUEST CABINS ■ OWNER'S OFFICE ■ HOSPITAL ■ GYM ■ MASSAGE SUITE ■ HAMMAM ■ POOL

O'PTASIA upper deck

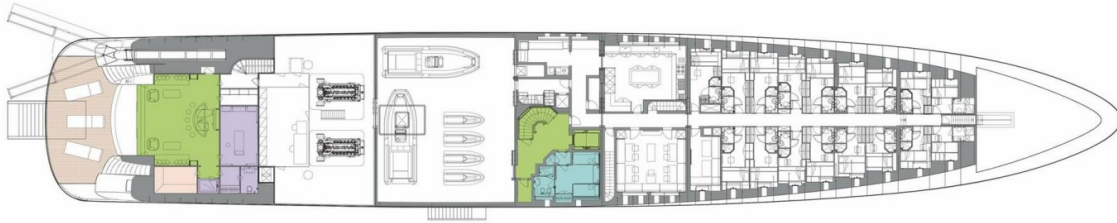
MAIN DECK



■ GUEST AREAS ■ OWNER'S SUITE ■ VIP SUITE ■ GUEST CABINS ■ OWNER'S OFFICE ■ HOSPITAL ■ GYM ■ MASSAGE SUITE ■ HAMMAM ■ POOL

O'PTASIA main deck

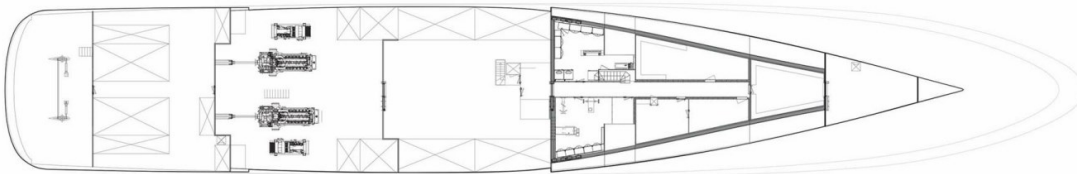
LOWER DECK



■ GUEST AREAS ■ OWNER'S SUITE ■ VIP SUITE ■ GUEST CABINS ■ OWNER'S OFFICE ■ HOSPITAL ■ GYM ■ MASSAGE SUITE ■ HAMMAM ■ POOL

O'PTASIA lower deck

TANK DECK



■ GUEST AREAS ■ OWNER'S SUITE ■ VIP SUITE ■ GUEST CABINS ■ OWNER'S OFFICE ■ HOSPITAL ■ GYM ■ MASSAGE SUITE ■ HAMMAM ■ POOL

O'PTASIA tank deck



INFO@STARSHIPYACHTS.COM • WWW.STARSHIPYACHTS.COM
+852 2555-2805 • 24 PO CHONG WAN, SHUM WAN RD. ABERDEEN - HK