



## PROJECT FOX



# PROJECT FOX



Asking price

**EUR 17,000,000**

Length  
**34.9m (114.3ft)**

Beam  
**7.7m (25.3ft)**

Cruising speed  
**12 knots**

Maximum speed  
**14.5 knots**

Range  
**3,000 nm**

Class  
**RINA Commercial C+Hull, Ych (CI) charter yacht**

Construction  
**Hull - Steel, Superstructure - Aluminium**

Crew  
**7**

Guests  
**10**

Engines  
**2 × 1,015hp Caterpillar**

Built

**2024, Pendennis Shipyard, United Kingdom**

Draft  
**2.2m (7.2ft)**

Gross Tonnage  
**295**

Flag  
**Cayman Islands**

Lying  
**Under Construction**

Exterior Designer  
**Tansu Yachts**

Interior Designer  
**QLondon**

Cabins  
**5 cabins (3 × double, 2 × double/twin)**

Propulsion  
**Twin screw diesel yacht**

# PROJECT FOX

---

## About PROJECT FOX

---

**Currently in build at the renowned Pendennis shipyard in Falmouth, UK, PROJECT FOX is a 34.9m (114.3ft) explorer yacht with an interior designed by Q London. Her steel hull and aluminium superstructure are constructed to RINA commercial classification and she is scheduled for delivery in spring 2024. She represents a rare opportunity to jump congested build queues considerably on a yacht that celebrates the very best of British design and engineering.**

PROJECT FOX is aptly named after one of Falmouth's most famous sons: Robert Were Fox the Younger. He was a 19th-century scientist who enabled exploration by inventing a compass that measured magnetic dip at sea in high latitudes, a compass that ultimately guided the expedition that discovered the South Pole. The associations between Fox, Falmouth and exploration are ones that resonate strongly in one of the very few genuine explorer yachts of this size.

Her striking exterior design is muscular and practical, almost military, in appearance, and her beach-house style interiors are bright and modern with an emphasis on comfort, versatility and safety. Key to her design is the 103.5sqm (1,114sqft) main deck aft, which enables her to carry a huge range of equipment, from watertoys and two 7.5m (24.6ft) tenders to amphibious vehicles and submersibles, launched by two 2.5T SWL deck cranes - carrying capacity usually unheard of in a yacht of this size.

With the toys launched, the main deck aft has endless possibilities for relaxation and entertainment. The space includes a DJ station, open-air dining and bar with optional shade from awnings. A glass-walled family room or media sky lounge, with a wine cellar in the lobby, opens onto a 46sqm (495sqft) terrace with BBQ and open-air dining, as well as walkaround sidedecks that lead to lounge seating forward of the bridge.

The yacht welcomes ten guests in five suites. She has a full beam owner's suite and on the lower deck, four double/twin cabins, all with en suites.

Twin Caterpillar C18 ACERT engines give her a top speed of 14.5 knots, a cruising speed of 12 knots and a maximum range of 3,000nm at 9 knots. CMC Marine stabilisers ensure guest comfort underway and at anchor.

## Key features

---

**A true explorer yacht currently in build at Pendennis, UK**

---

**Northern European quality**

---

**Capable of carrying 2 x 7.5m tenders or a wide variety of water toys**

---

**Large aft deck with 103.5 sqm of open deck space**

---

**Full beam owner's stateroom plus four additional double/twin cabins**

---

**Contemporary light interiors by Q London**

---

**3,000nm range at 9 knots**

---

## Tenders

---

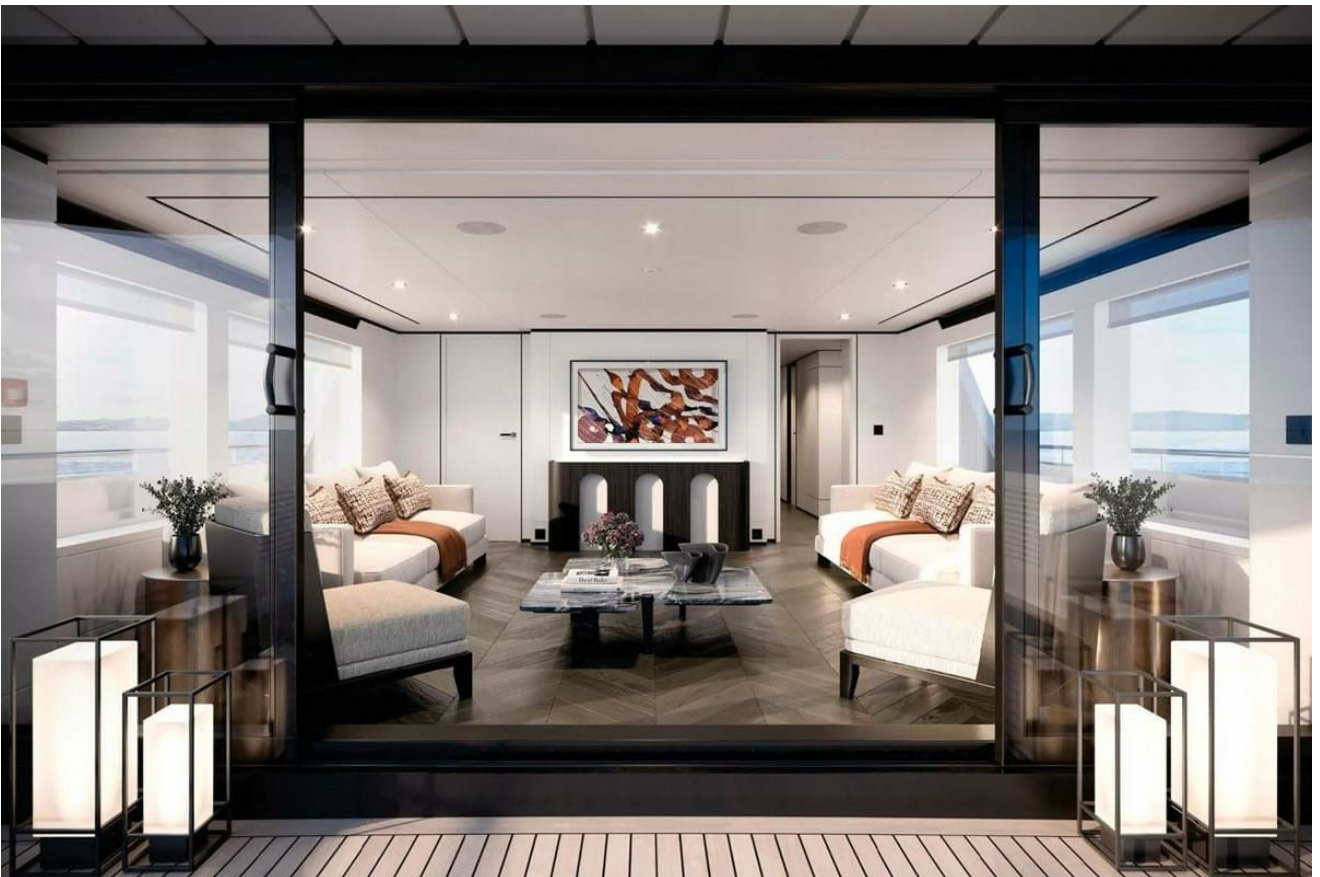
Zodiac 5.5m PRO rigid bottom inflatable & capacity for additional tenders & toys as part of owner's supply

# PROJECT FOX

---



PROJECT FOX 00009409



PROJECT FOX 00009409

# PROJECT FOX



PROJECT FOX 00009409



PROJECT FOX 00009409

# PROJECT FOX

---



PROJECT FOX 00009409



PROJECT FOX 00009409

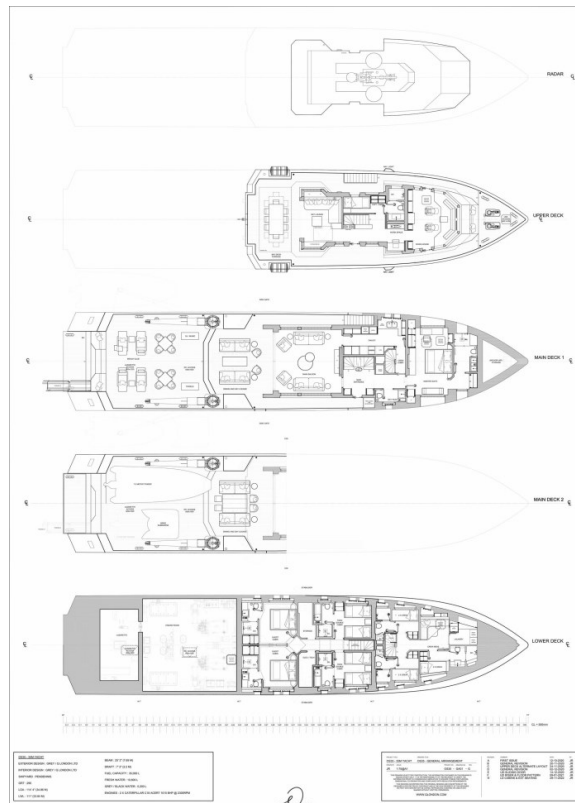
# PROJECT FOX

---



PROJECT FOX 00009409

# PROJECT FOX



Deck plans





INFO@STARSHIPYACHTS.COM • WWW.STARSHIPYACHTS.COM  
+852 2555-2805 • 24 PO CHONG WAN, SHUM WAN RD. ABERDEEN - HK