

*Riva*



# 110 DOLCEVITA

For Sale: €11.000.000

2020

110 ft

Riva

## TECHNICAL SPECIFICATIONS

Max Speed **26 kn**

Engines **2x2638HP MTU 16V2000M96L**

Length Overall **33.53m (110'0")**

Beam **7.27m (23'10")**

Draft **1.99m (6'6")**

Water Tank **3.000 l**

Fuel Tank **15.300 l**

Displacement **147.000 kg**

Cabins **3 guest cabins + 3 crew**

Max Persons **20**

Year Built **2020**

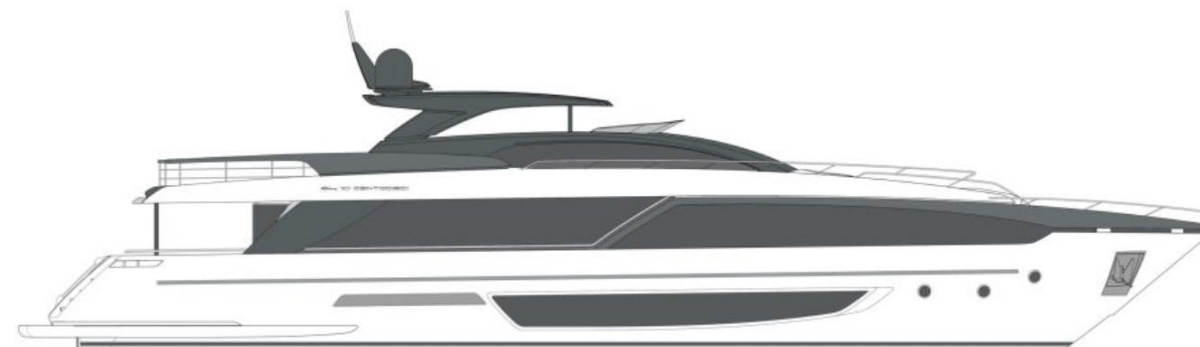
Engine Hours **800**

Generator Hours **3.000**

Designer **Officina Italiana Design**

Certification **ORINA Class Certificate for Pleasure Yachts, C HULL, • MACH, Y, Unrestricted Navigation**

# 110 DOLCEVITA



**For Sale: €11.000.000**

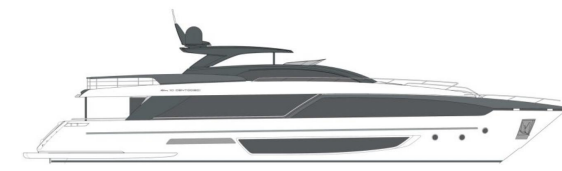


Riva

110 DOLCEVITA





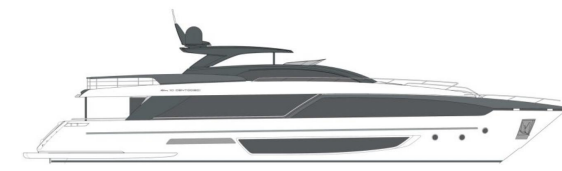


Riva

110 DOLCEVITA





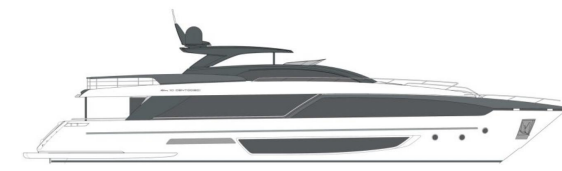


110 DOLCEVITA

Riva





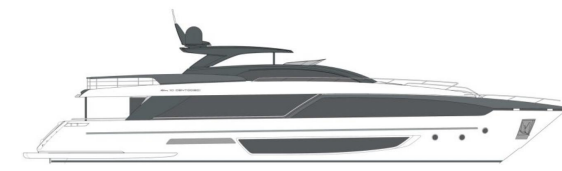


110 DOLCEVITA

Riva





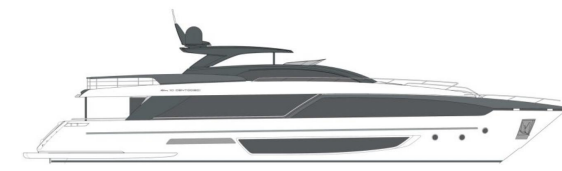


110 DOLCEVITA

Riva





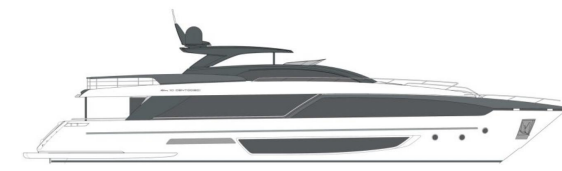


110 DOLCEVITA

Riva







110 DOLCEVITA

Riva



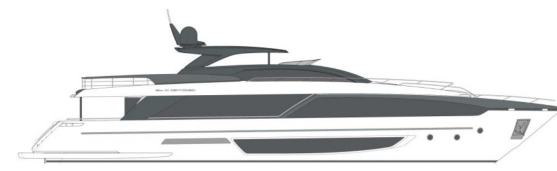


110 DOLCEVITA

Riva







110 DOLCEVITA

Riva



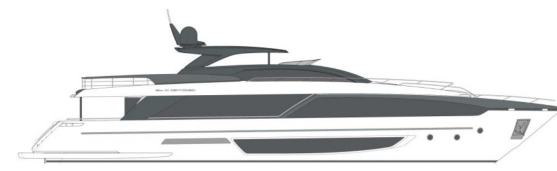


110 DOLCEVITA

Riva







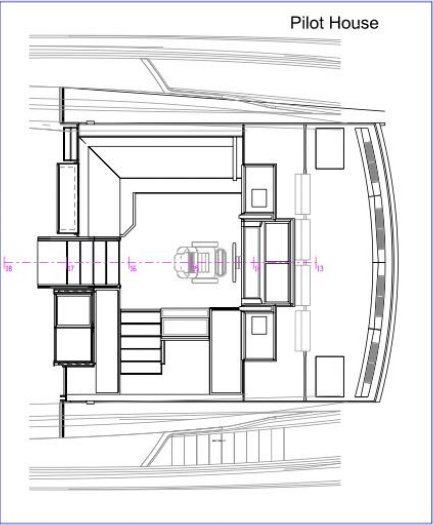
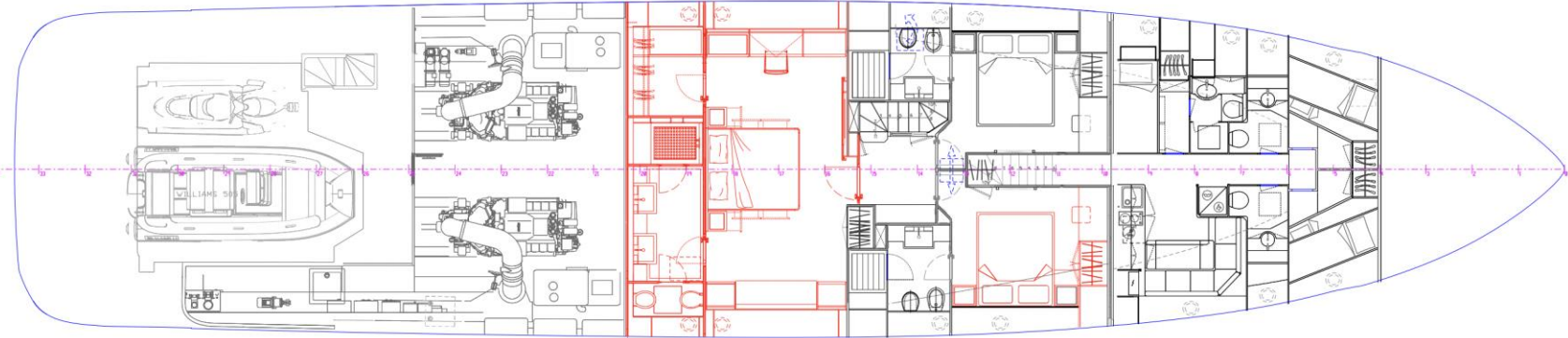
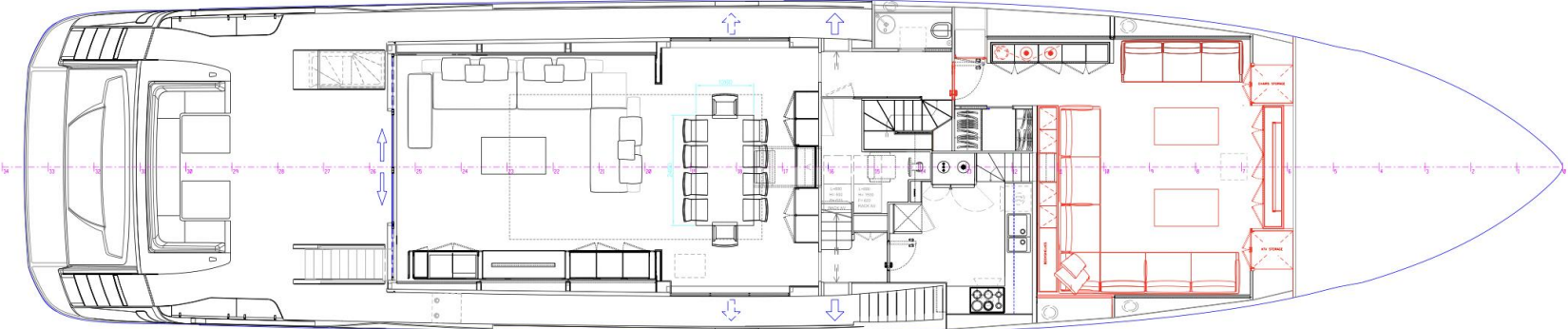
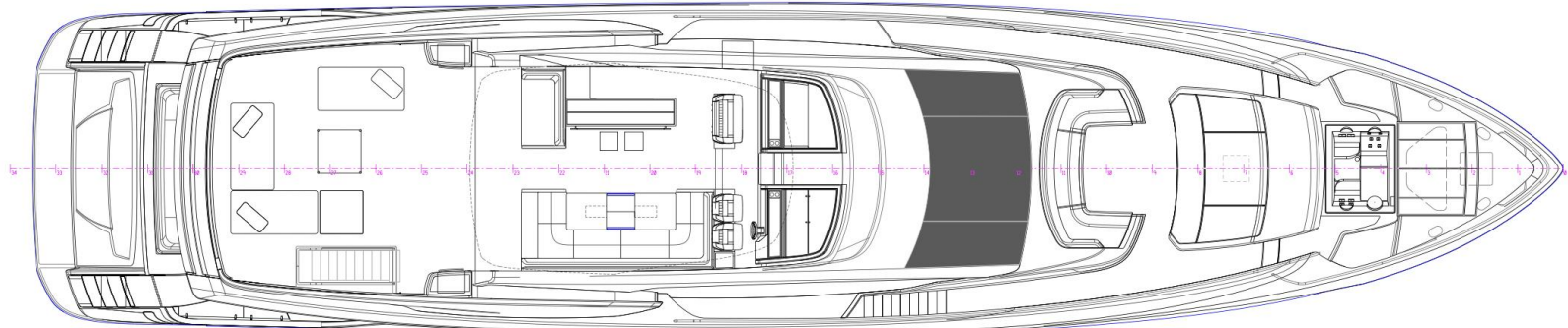
110 DOLCEVITA

Riva



# EXTERIOR & INTERIOR LAYOUT

# 110 DOLCEVITA



Outline specification believed to be correct but not to be taken contractually