



RIVA CORSARO 100

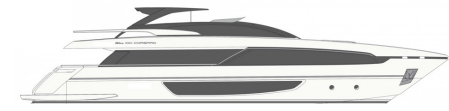
100ft | RIVA | 2018

★ **STARSHIP YACHTS**

24 Po Chong Wan, Shum Wan Road, Aberdeen,
Hong Kong
Tel: +852 2555-2805
STARSHIPYACHTS.COM
info@starshipyachts.com



RIVA CORSARO 100



4 staterooms | 2018 | 8 Guests

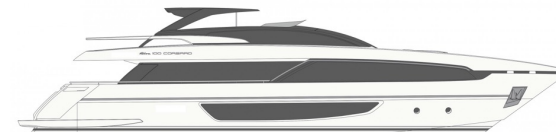
| | |
|-----------------------|-------------------------------|
| Cruising Speed | 24 kn |
| Max Speed | 28 kn |
| Engines | x 2 MTU 16V 2000 M96L 2638 HP |
| Length Overall | 29.9m (98'1") |
| Beam | 6.7m (22') |
| Draft | 2.26m (7'5") |
| Cabins | 4+1 (crew) |

For Sale: €7.900.000

★ STARSHIP YACHTS

RIVA CORSARO 100

Main Deck - Cockpit



24 Po Chong Wan, Shum Wan Road, Aberdeen, Hong Kong

Tel: +852 2555-2805

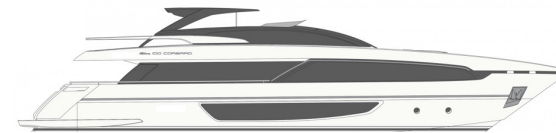
STARSHIPYACHTS.COM

info@starshipyachts.com

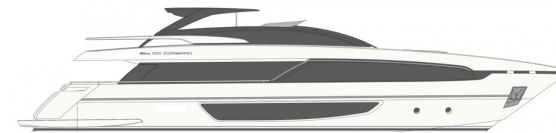
★ STARSHIP YACHTS

RIVA CORSARO 100

Main Deck - Living Room
& Dining Room



24 Po Chong Wan, Shum Wan Road, Aberdeen, Hong Kong
Tel: +852 2555-2805
STARSHIPYACHTS.COM
info@starshipyachts.com





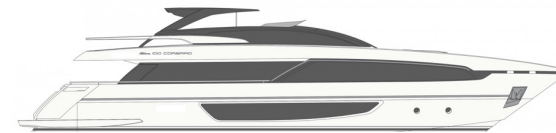




★ STARSHIP YACHTS

RIVA CORSARO 100

Flybridge - Helm Station
& Sun Deck

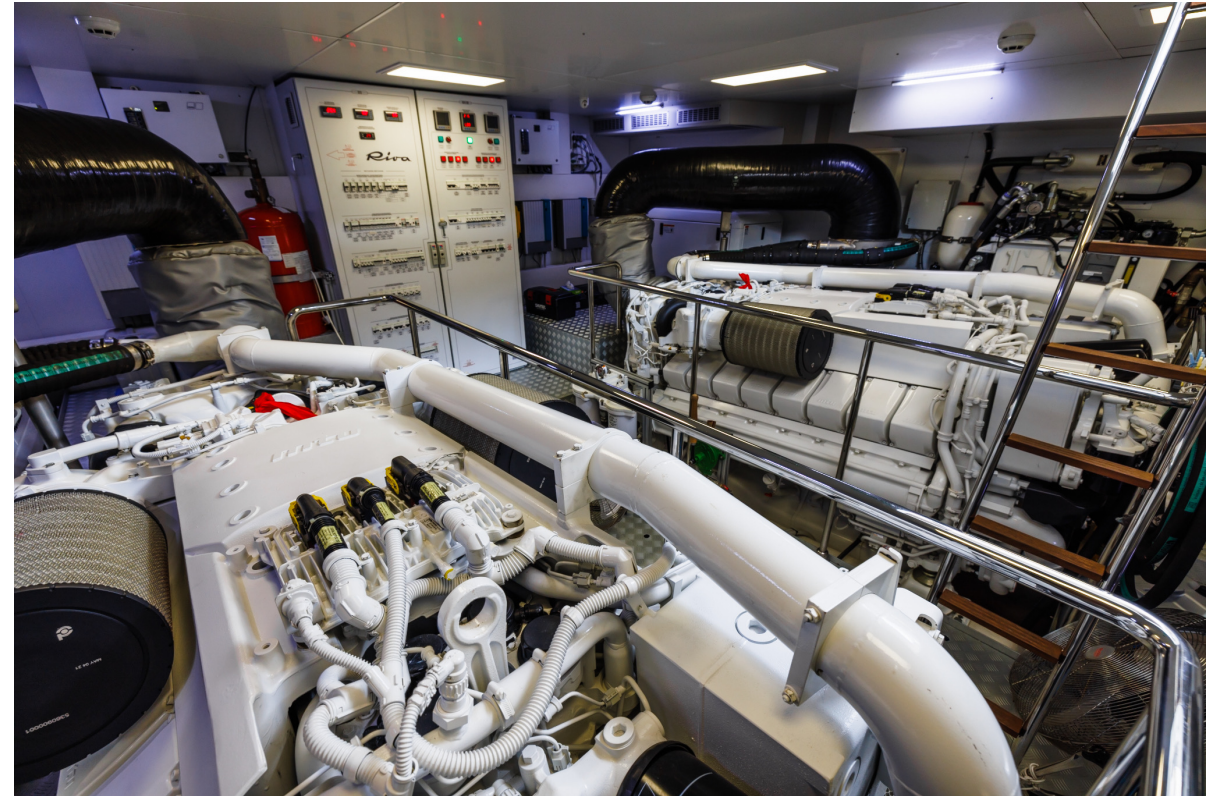


24 Po Chong Wan, Shum Wan Road, Aberdeen, Hong Kong
Tel: +852 2555-2805
STARSHIPYACHTS.COM
info@starshipyachts.com

★ STARSHIP YACHTS

RIVA CORSARO 100

Foredeck - Lounge Area
& Engine Room



24 Po Chong Wan, Shum Wan Road, Aberdeen, Hong Kong
Tel: +852 2555-2805
STARSHIPYACHTS.COM
info@starshipyachts.com

TECHNINICAL SPECIFICATIONS | RIVA CORSARO 100



| | |
|-----------------------------|-------------------------------|
| Length Overall | 29.9m (98.1 ft) |
| Max Beam | 6.7m (22 ft) |
| Draft | 2.26m (7.5 ft) |
| Engines | x 2 MTU 16V 2000 M96L 2638 HP |
| Engine Hours | 440/439 |
| Generator | x 2 KOHLER 28EFOZD 28kW/unit |
| Generator Hours | 2308/2303 |
| Fuel Capacity | 9000 lt (2378 Gal) |
| Fresh Water Capacity | 1320 lt (349 Gal) |
| Maximum Speed | 24 kn |
| Cruise Speed | 28 kn |
| No max. passengers | 20 |
| No of Cabins | 4 + 1 (crew) |
| Year Built | 2018 |

Outline specification believed to be correct but not to be taken contractually

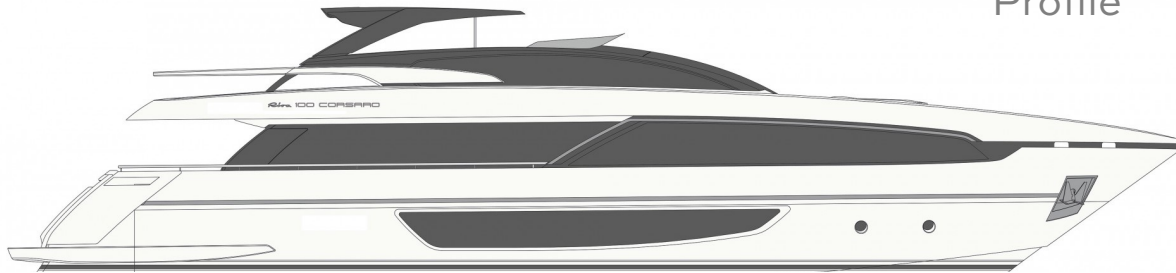
24 Po Chong Wan, Shum Wan Road, Aberdeen, Hong Kong

Tel: +852 2555-2805

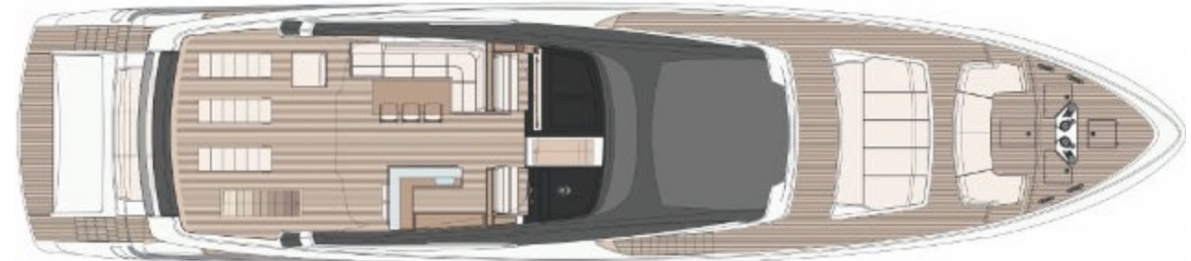
STARSHIPYACHTS.COM

info@starshipyachts.com

LAYOUT | RIVA CORSARO 100



Profile



Sun Deck



Main Deck



Lower Deck

Outline specification believed to be correct but not to be taken contractually

ACCESSORIES

RIVA CORSARO 100



Custom colour for hull+deck+aft
Superstructure custom colour
Sundeck area manual bimini with carbon poles
Manual awning at bow
Air/co Super Tropic 216.000 BTU
Automatic battery charger for generators
Stern thruster 32 hp
Gyro Stabilizer
Additional helm station (bow and stern thruster installed)
Guardrail and fiberglass side openings (one per side)
Cabin and bath lower deck aft full beam
Meteo station (wind/weather)
EPIRB Emergency locator ACR
Display 19" high brightness
Autoidentification Sytem AIS Furuno Class B (TX-RX FA 50)
FLIR NIGHT – LOW LIGHT VISION THERMAL CAMERA
Wine Cooler
Electric sliding saloon door
Electric Curtains
Black out curtains with electric motion in all cabins (crew cabin not included)
Dimmer all over the boat
Ambient lights

VIP cabin safe
Interiors of the boat mat lacquered
Audio-video configuration area 6
Master CAB: sofa instead of furniture
Reinforcement mooring cleats aft
Deletion bidet
UPS for audio-video system
Additional flush cleats
Marble in master bathroom diff from STD
Marble in Dining Area diff from STF
Marble in bow guest cabin right bathroom diff from STD
Marble in bow guest cabin left bathroom diff from STD
Additional dining chairs
Carpet diff from standard
Custom piping for external areas
Multistandard sockets
Additional navigation light
HDMI connection
Additional External socket
Additional socket 230V for inside (each)
Galley floor & top in corian diff from STD
Additional Master bed headboard lights
Cockpit cover
Navnet 3D: additional chart map, "extra large" size

Outline specification believed to be correct but not to be taken contractually

24 Po Chong Wan, Shum Wan Road, Aberdeen, Hong Kong

Tel: +852 2555-2805

STARSHIPYACHTS.COM

info@starshipyachts.com