

## SANAM



# SANAM



#### Asking price

**EUR 29,900,000 (EU VAT paid)**

Length  
**52.4m (171.9ft)**

Beam  
**9.1m (29.8ft)**

Cruising speed  
**17 knots**

Maximum speed  
**30 knots**

Range  
**4,600 nm**

Class  
**Lloyds Register 100A1 SSC YACHT MONO HSC G6 LMC**

Construction  
**Hull - Aluminium, Superstructure - Aluminium, Deck - Teak**

Crew  
**10**

Guests  
**14**

Engines  
**2 × 4,613hp MTU**

#### Built

**2016, Palmer Johnson, United States Of America**

Draft  
**2m (6.6ft)**

Gross Tonnage  
**495**

Flag  
**Malta**

Lying  
**West Mediterranean**

Exterior Designer  
**Nuvolari & Lenard**

Interior Designer  
**Todhunter Earle**

Cabins  
**6 cabins (4 × double, 2 × twin, 2 × additional berths)**

Propulsion  
**Twin screw diesel yacht**

#### Note

Not available for sale to US residents while in US waters

## About SANAM

---

**The newest of Palmer Johnson's admirable SportYacht 170 series, SANAM was delivered in 2016 and is now available for sale. Effortlessly blending performance with style and comfort this yacht measures 52.4m (171.9ft) in length with 495GT of opulent interior living space. Only used privately by one owner since new she presents immaculately and her interior styling by Todhunter Earle with exterior design by Nuvolari Lenard can truly be admired throughout this impressive vessel.**

Upon boarding the yacht's swim platform guests are immediately greeted by a vast main deck aft, complete with a comfortable lounge area aft and a sizable alfresco dining space. Inside the main deck lounge large picture windows line the room and fold out balconies on both the port and starboard sides lend to a relaxingly modern yet minimalist interior.

A guest double cabin is located forward of the formal dining area and is complete with an en suite bathroom and day bed. Two queen size double cabins are located amidships on the lower deck aft and two twin cabins each with pullman berths are located on the lower deck forward. A private stairwell and lobby lead to the vast full beam master suite, which is equipped with large windows and enhanced by a walk in wardrobe and generous en suite bathroom.

Many sought-after amenities can be found on the yacht's exterior decks. A sizable saltwater pool is located on the foredeck and a jacuzzi can be found on the sun deck. Those looking to unwind after a long day of exploration on the water can enjoy a movie under the covered lounge on the sun deck or relax on the sunpads aft.

Four Seakeeper gyro stabilisers ensure comfort while underway and at anchor, and twin 4,613hp diesel engines allow top speeds of 30 knots. With a shallow draft of 2m (6.6ft) SANAM can reach some of the most remote locations, and at 10.5 knots she has a transatlantic range of 4,600nm.

## Key features

---

**Impeccably maintained and used privately as a single season yacht by one owner since new**

---

**A large saltwater swimming pool can be enjoyed on the foredeck along with a jacuzzi on the sun deck**

---

**Bright, modern, and minimalist interior styling throughout the yacht with fold out balconies on the port and starboard sides of the main deck for open air living**

---

**Flexible accommodation for up to 14 guests in six spacious cabins**

---

**Four Seakeeper gyro stabilisers for comfort while underway and at anchor**

---

## Tenders

---

1 x Castoldi Rescue tender Jet 21LC, 260 HP, turbo drive waterjet, 2 x Sea Doo 2020 RXPX 300 hp



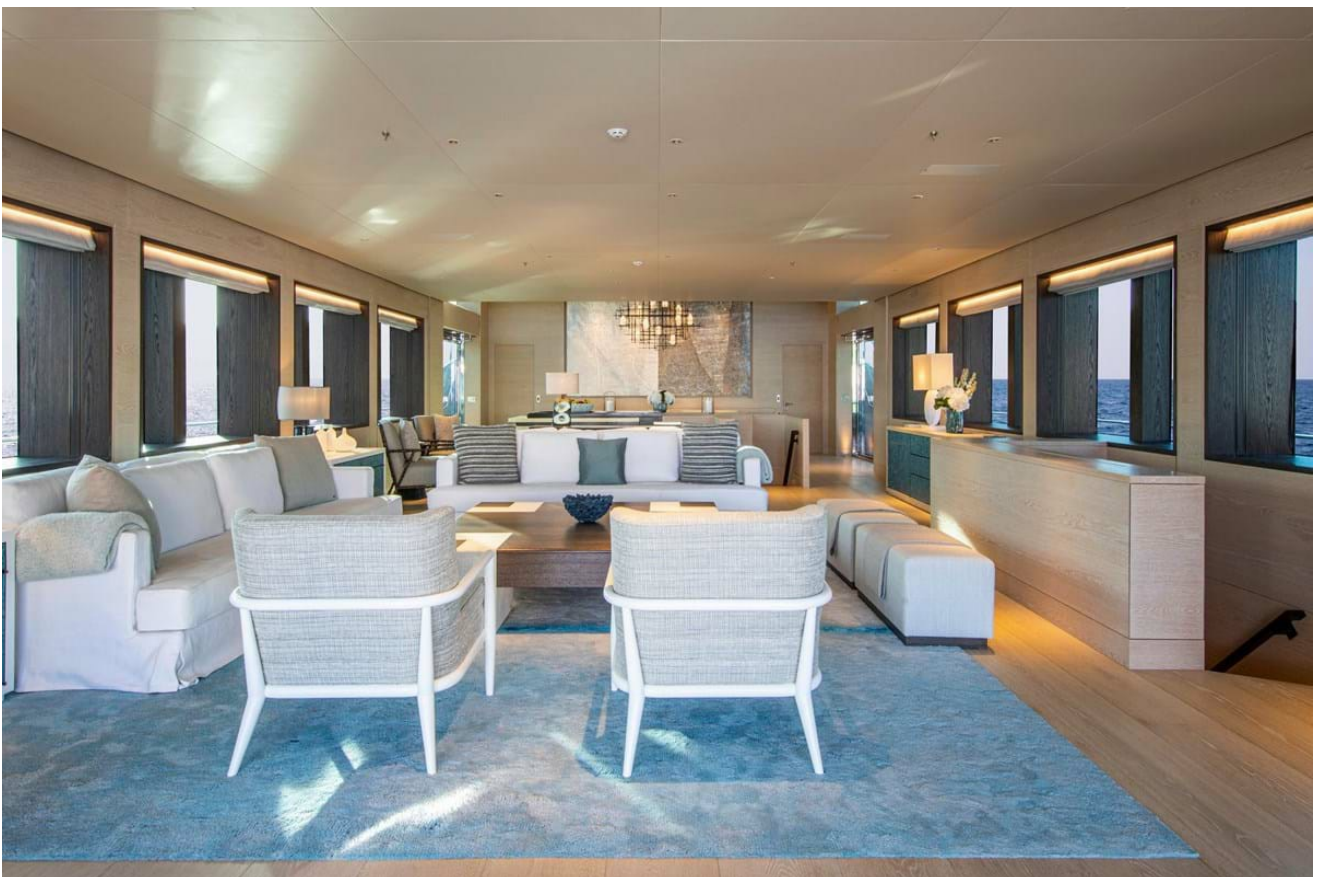
Cruising



Cruising



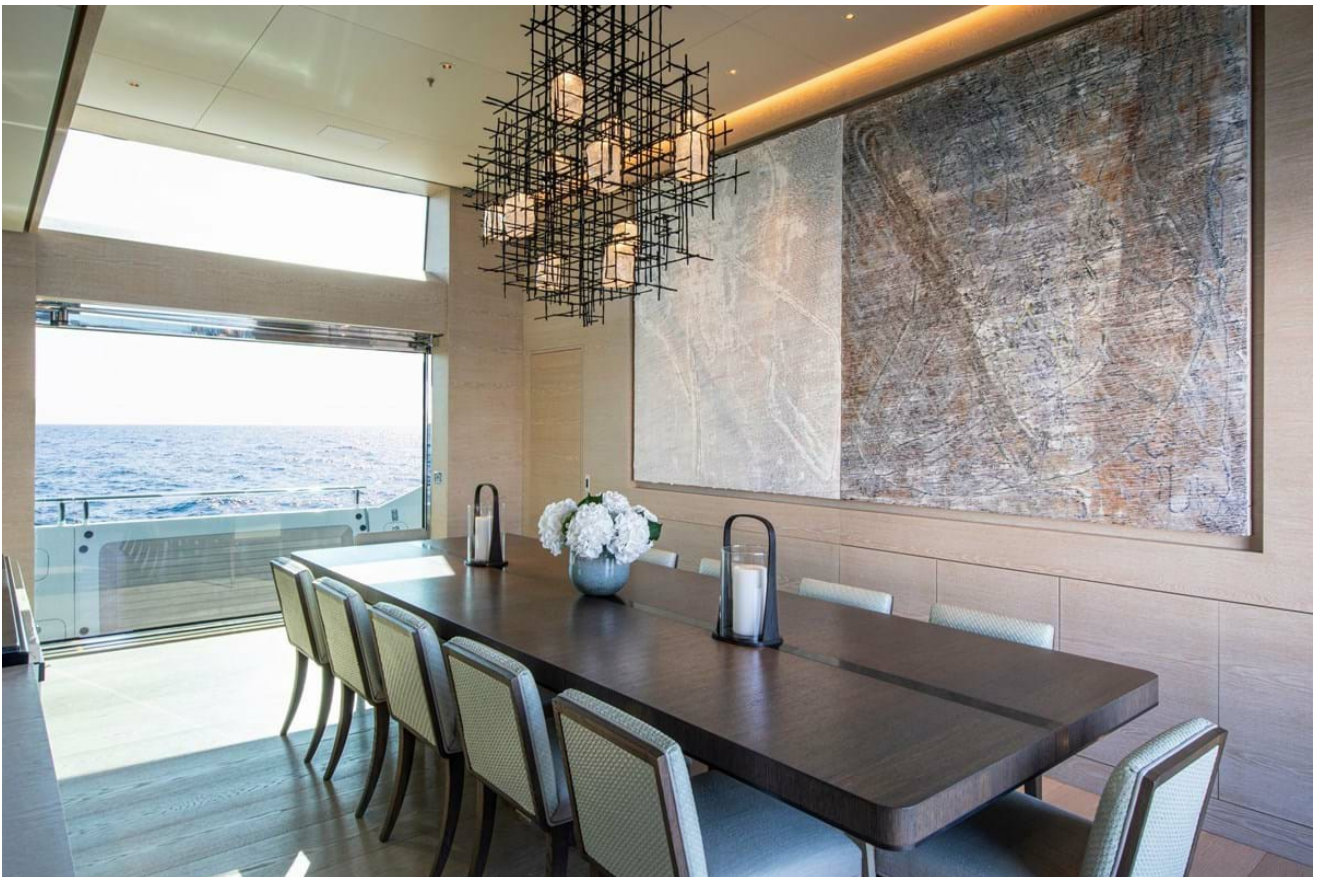
Cruising



Main deck lounge



Main deck lounge



Formal dining



Formal dining with fold out balcony



Master cabin



Master cabin



Master cabin





Master en suite bathroom



Master en suite bathroom



Guest double cabin with day bed



Day bed



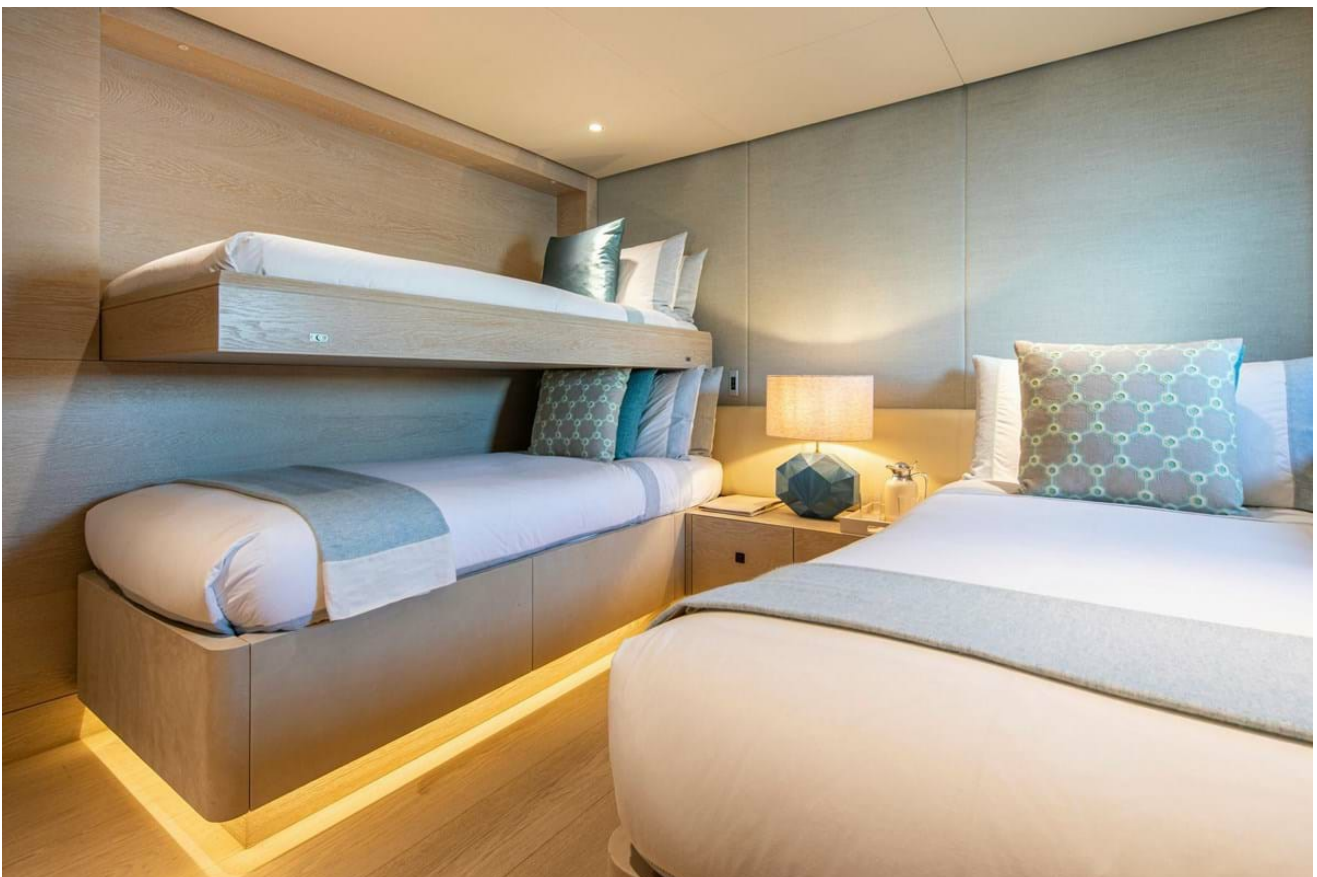
Guest en suite bathroom



Guest double cabin



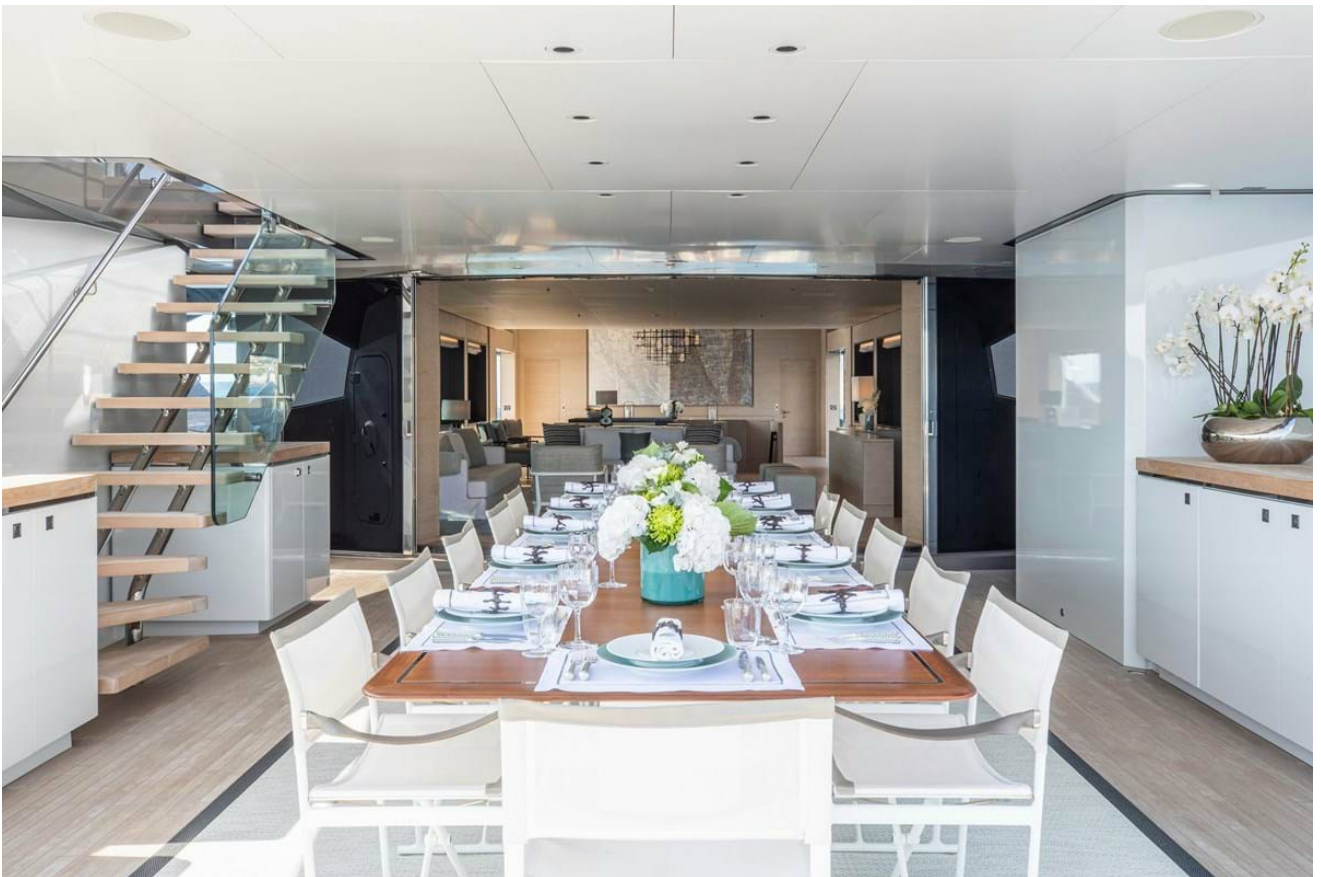
Guest double cabin



Twin cabin with pullman



Guest en suite bathroom



Main deck aft



Main deck aft



Forecastle deck pool



Pool



Pool at night



Sun deck



Sun deck cinema





Sun deck jacuzzi



Jacuzzi at night



Bridge



Galley



Engine room



Forecastle deck pool and tender storage

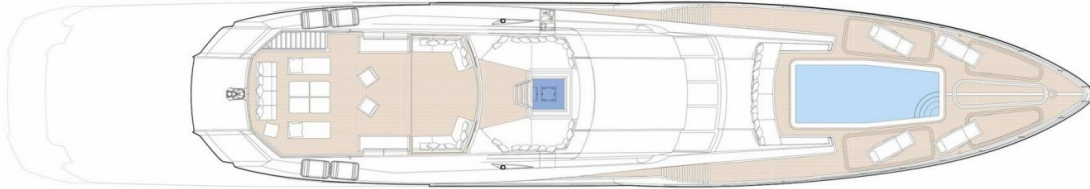


Stern



Aerial view

## SUN DECK



■ GUEST AREAS ■ OWNER'S SUITE ■ GUEST CABINS ■ JACUZZI ■ POOL

Sun deck

## WHEELHOUSE DECK



■ GUEST AREAS ■ OWNER'S SUITE ■ GUEST CABINS ■ JACUZZI ■ POOL

Wheelhouse deck

## MAIN DECK



■ GUEST AREAS ■ OWNER'S SUITE ■ GUEST CABINS ■ JACUZZI ■ POOL

Main deck

## LOWER DECK



■ GUEST AREAS ■ OWNER'S SUITE ■ GUEST CABINS ■ JACUZZI ■ POOL

Lower deck



INFO@STARSHIPYACHTS.COM • WWW.STARSHIPYACHTS.COM  
+852 2555-2805 • 24 PO CHONG WAN, SHUM WAN RD. ABERDEEN - HK