



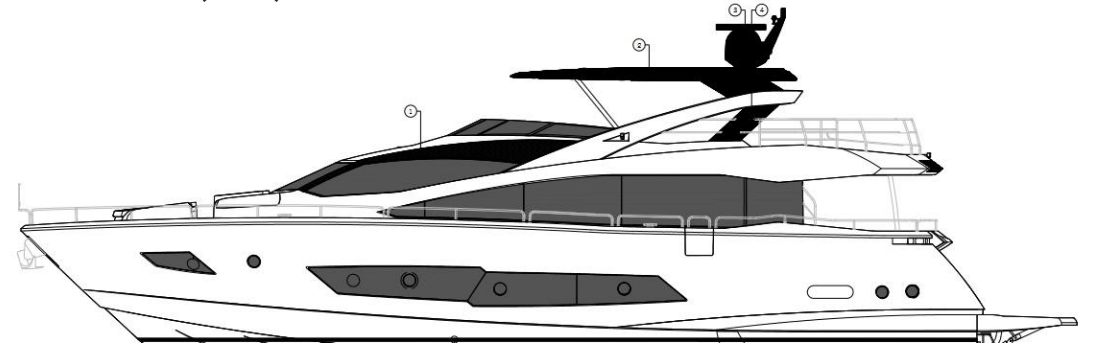
For Sale: USD \$3.500.000 | 2018 | 86ft



1/F Unit 107, Aberdeen Marina Tower,
8 Shum Wan Road, Aberdeen, Hong Kong
Tel: +852 2555-2805
STARSHIPYACHTS.COM
info@starshipyachts.com

Technical Specifications

Engines	2 x MTU 12V 2000 M96L (2 x 1950hp)
Max Speed	30 kn
Cruise Speed	25 kn
Length Overall	26.30m (86'3')
Beam	6.47m (21'3")
Draft	1.95m (6'5")
Water Tank	1.400 l
Fuel Tank	11.000 l
Cabins	4 guest cabins + 1 crew
Max Persons	20
Year Built	2018
Engine Hours	474 hours
Generator	x 1 Kohler 28kW 50Hz (28EFOZD). x 1 Kohler 33kW 50Hz (33EFOZDJ)
Generator Hours	28kW(3,103 hours), 33kW (2,277 hours)



For Sale: USD \$3.500.000











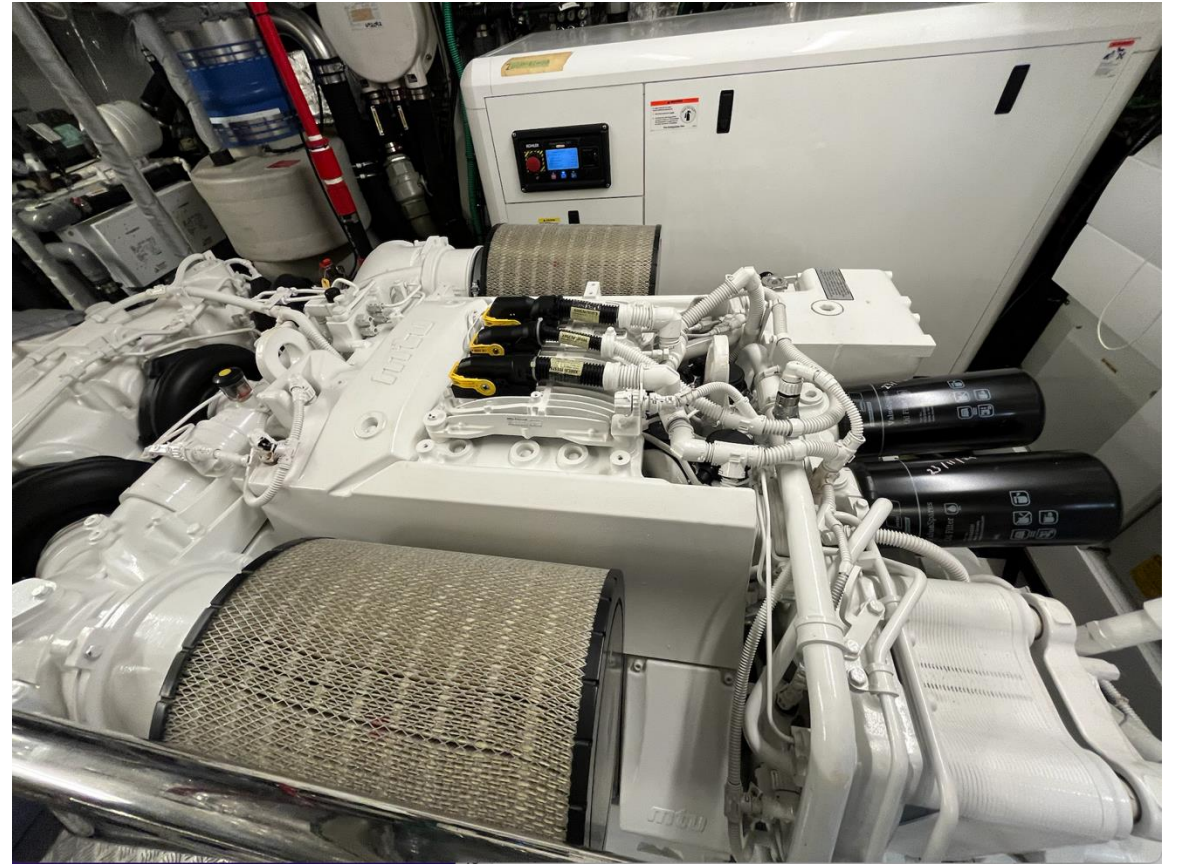




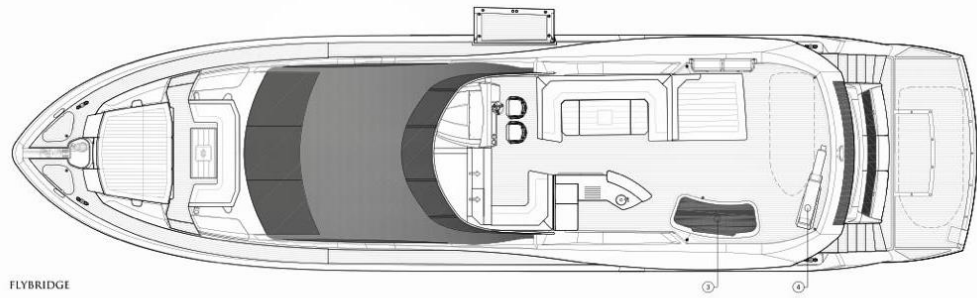




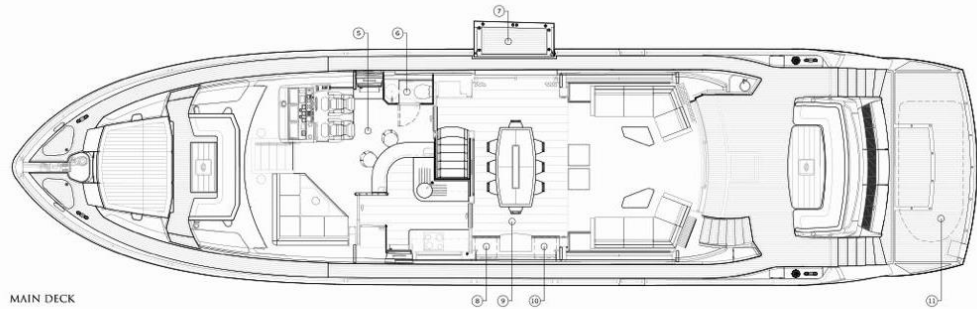




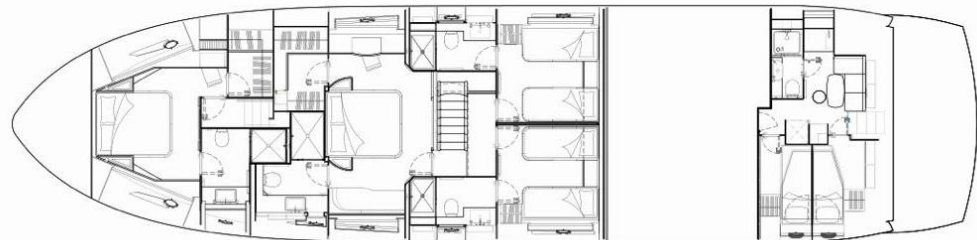
EXTERIOR & INTERIOR LAYOUT



FLYBRIDGE



MAIN DECK



LOWER DECK

ACCESSORIES



- Saloon Samsung 65" TV fitted with Harmon Kardon Blu-ray/DVD/CD/FM radio
- Galley bar 22" TV and hinged bracket with Fusion DVD/CD/Radio and Speakercraft CRS8 speaker
- Master cabin Samsung 40" television with Harmon Kardon Blu-ray/DVD/CD/FM radio
- Forward cabin Samsung 40" television with Harmon Kardon Blu-ray/DVD/CD/FM radio
- Starboard Guest cabin 22" Television with Harmon Kardon Blu-ray/DVD/CD/FM radio
- Port Guest cabin 22" Television with Harmon Kardon Blu-ray/DVD/CD/FM radio
- Aft cockpit zone with x 4 Sonance VP65R XT Extreme Speakers
- Flybridge zone with x 6 Sonance VP65R XT Extreme Speakers
- Foredeck zone with x 2 Sonance VP65R XT Extreme Speakers
- Crew cabin 22" television with Fusion DVD/CD/Radio
- Bow thruster system – Sleipner SP550HYP
- Stern thruster system – Sleipner SP550HYP
- Sleipner hydraulic stabiliser units with Vector finds for underway and at anchor stabilisation
- Hydraulic lifting platform (max lift capacity: 650 kg) with tender max weight 550 kg
- Besenzoni Hydraulic telescopic Passerella 5m
- Water purifier for icemaker – General Ecology Nature Pure in-line systems
- Simrad NSO processor with Simrad OP40 controller
- Simrad Halo 6 Pulse Compression Radar 72nm
- Simrad GS25 GPS Antenna
- Simrad Autopilot system with control from GS80 joystick and IS40 display
- Simrad BSM-1 Sounder module with B744V speed depth transducer
- Simrad RS90 VHF
- Simrad AIS NAIS 400 Class B AIS transponder with integrated GPS receiver
- Flybridge: x 2 NSS16 evo2 16" chart plotter
- Flybridge: Simrad Autopilot system QS80 controller IS40 display
- Flybridge: Simrad IS40 Multifunction Instruments
- Flybridge: second station RS90 VHF
- Air conditioning: upgrade to tropical specification – 228,000 BTU
- Underwater lights: Lumishore LED x 8 (x 4 on stern, x 2 port side, x 2 starboard side)
- Custom Refrigeration by Frigoboat (250 litres fridge capacity, 120 litres freezer capacity)
- Miele KM5600 HI-Light 4 ring ceramic hob
- Miele Microwave M6022
- Miele Dishwasher G6860
- U-Line wine cooler on main deck
- Icemaker Victrofrigo Classic
- One Kohler 28kW 50Hz Generator, One 33kW 50Hz Generator



1/F Unit 107, Aberdeen Marina Tower, 8 Shum Wan Road,
Aberdeen, Hong Kong
Tel: +852 2555-2805
STARSHIPYACHTS.COM
info@starshipyachts.com