



FABULOUS CHARACTER



FABULOUS CHARACTER



Summer rate per week (low/high)

EUR 154,000 / EUR 175,000

Summer cruising

West Mediterranean

Built

2010 (refitted 2022), Holland Jachtbouw, The Netherlands

Length

42.3m (138.7ft)

Beam

8.4m (27.6ft)

Draft

2.6m (8.4ft)

Gross Tonnage

453

Maximum speed

16 knots

Cruising speed

12 knots

Winter rate per week (low/high)

USD 154,000 / USD 175,000

Winter cruising

Caribbean & Bahamas

Guests

10

Crew

9

No. of guest cabins

5 cabins (3 × double, 2 × twin)

Engines

2 × 1,930hp MTU

Fuel consumption at cruising speed

300 litres per hour

FABULOUS CHARACTER

About FABULOUS CHARACTER

FABULOUS CHARACTER is a much-loved yacht with a loyal following of repeat charterers. As soon as you see her generous inside and outside lounges, sun deck and bedrooms you can see why. This yacht has been designed to optimise every inch of space – which is how she can take 10 guests with nine crew, to give you an impressive crew to guest ratio. Plus, her gym, beach club and water toys tick all the boxes that you'd expect on a much larger yacht. At just over 42m, (148.9ft) FABULOUS CHARACTER, is perfectly formed.

Built by Holland Jachbouw in 2010 for an experienced yacht owner, every detail has been considered. When you step inside you will find a light and fresh décor that creates an informal and yet refined atmosphere. There are five bedroom cabins, with the full-beam master suite forward on the main deck. For your meals, you can choose to eat inside in the main deck dining room, or on the bridge deck for an al fresco meal with views of your anchorage.

When you are at anchor, the crew can set up the inflatable platform astern that acts as a jetty for your fleet of water toys. Plus, there's a waterside that can be put in place from the sun deck to the sea, to provide hours of fun for children – big and small!

Explore underwater with the Brownie's tankless diving system. It's an ideal step for those who want to progress from snorkelling to scuba diving – and safe for everyone from beginners. If you want to adventure further afield, take the 11.8m (39ft) Invincible chase boat up the coast, the boat is fully rigged for fishing as well.

Every charterer knows that the captain and crew make the holiday, and aboard this yacht Captain Scott Miller is your man. He has an outstanding reputation, as do the rest of his crew. Delivering the seven-star Burgess service is what they do best, so you can sit back, relax and enjoy...

Key features

Award winning yacht

Timeless elegant interior, pleasing neutral palate

Comfortable accommodation for 10 guests

Elegant full beam master stateroom with private study and separate his & hers en suites

Fabulous al fresco dining bridge deck aft

Wide array of watersports equipment

Extensive selection of gym equipment; Pelaton, Bowflex, rowing machine plus more

Sun deck jacuzzi

Zero speed stabilisers to reduce any rolling motion while at anchor

Tenders & toys



1 x Towed tender



2 x Tenders



1 x Deck jacuzzi



Waterslide



Anti-jellyfish pool



Inflatable platform



2 x SeaBobs



2 x eFoils



2 x Kayaks



2 x Stand up
paddleboards



Wakeboard



Kneeboard



Waterskis



Inflatable tows



Fishing gear



Snorkelling gear

Fitness equipment



Cross trainer



Free weights



Pedal bike



Resistance bands



Rowing machine



Training bench



Treadmill



Upright stationary bike



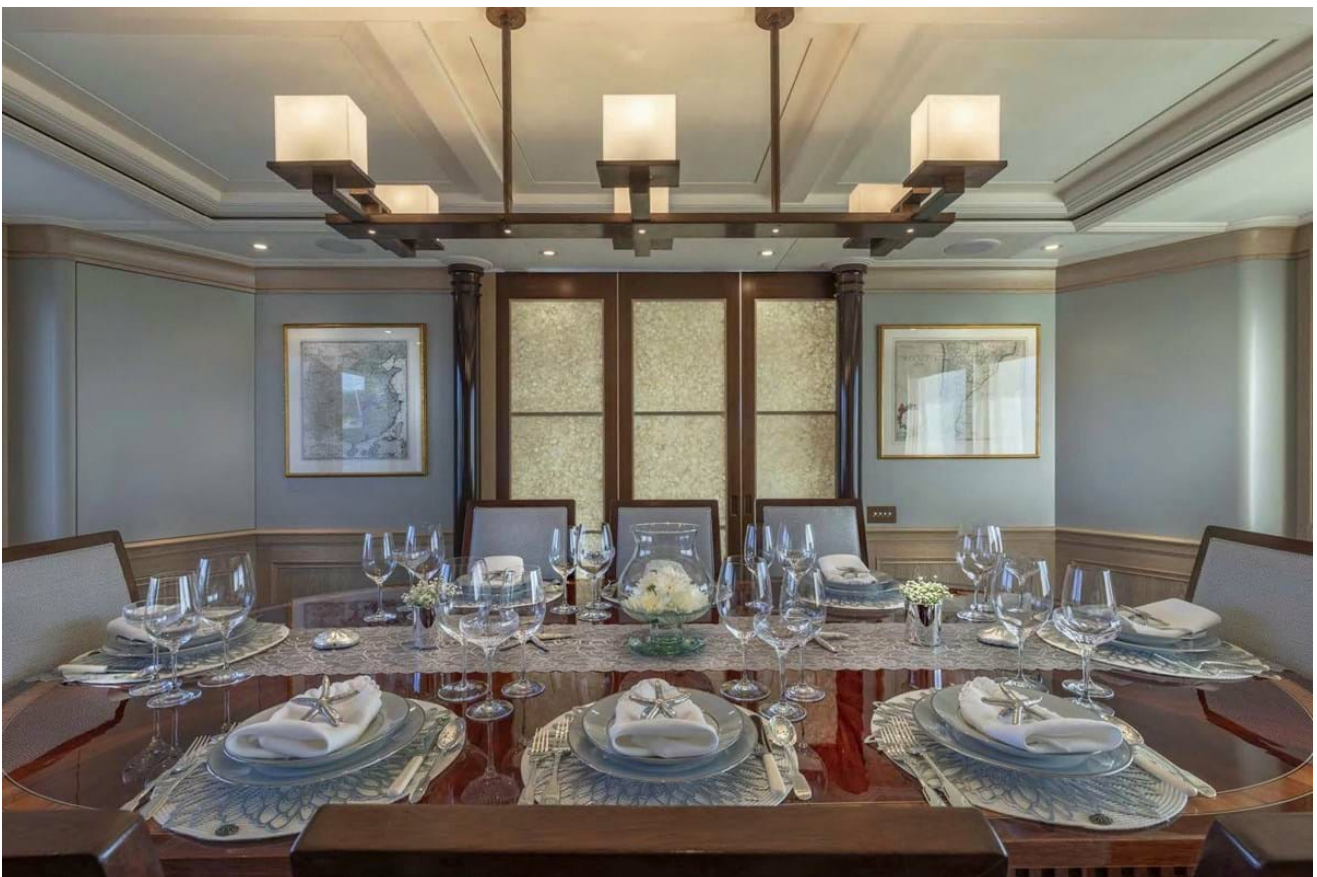
Yoga mats

Please note that tenders, toys and fitness equipment are subject to regular upgrades and changes. Contact a Burgess broker for the latest information.

FABULOUS CHARACTER



Main deck lounge

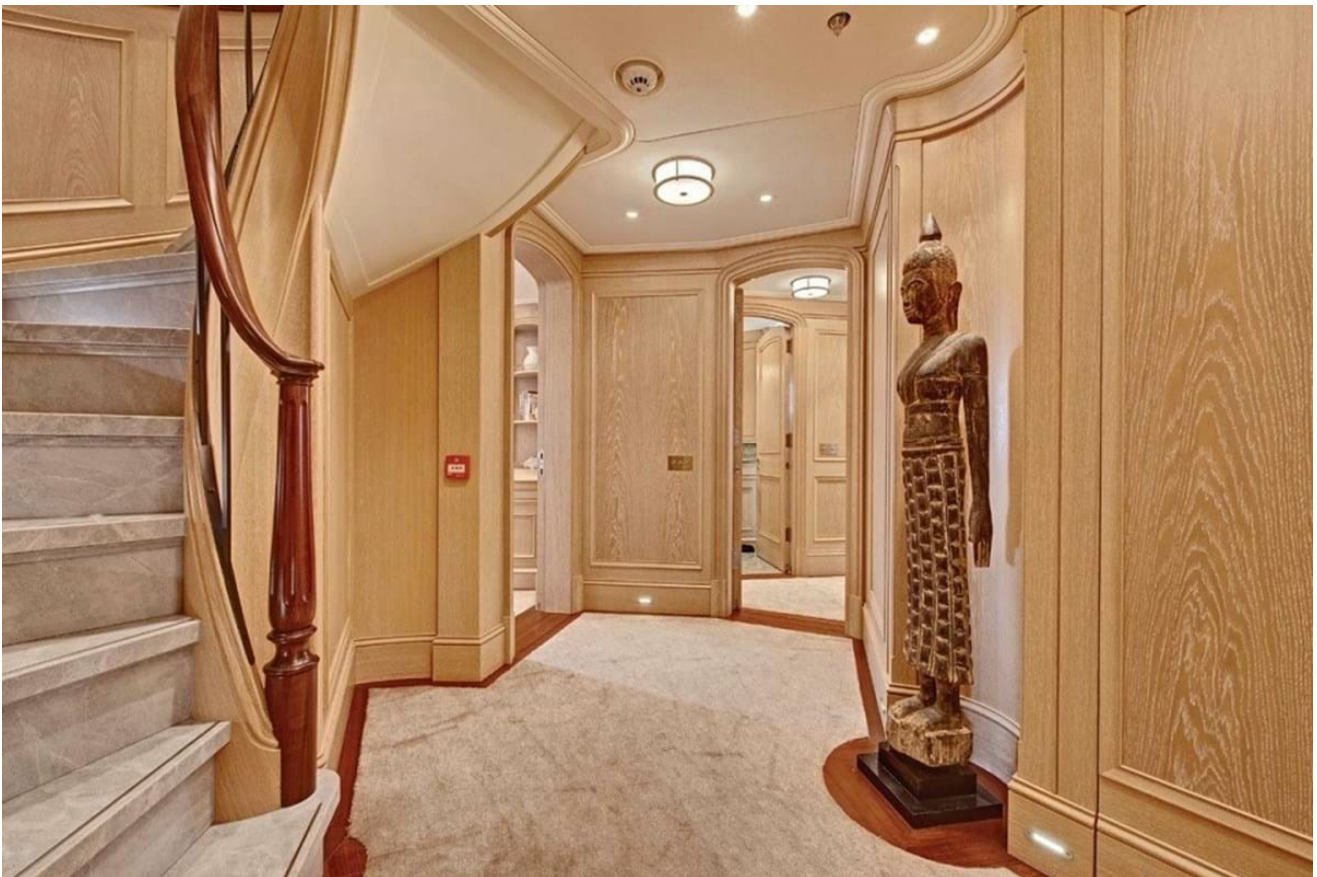


Main deck dining area

FABULOUS CHARACTER



Master cabin



Lower deck foyer

FABULOUS CHARACTER



Double cabin



Double cabin

FABULOUS CHARACTER



Twin cabin



Sky lounge

FABULOUS CHARACTER



Bridge deck aft dining



Sun deck

FABULOUS CHARACTER



Sun deck jacuzzi



Sun deck jacuzzi

FABULOUS CHARACTER

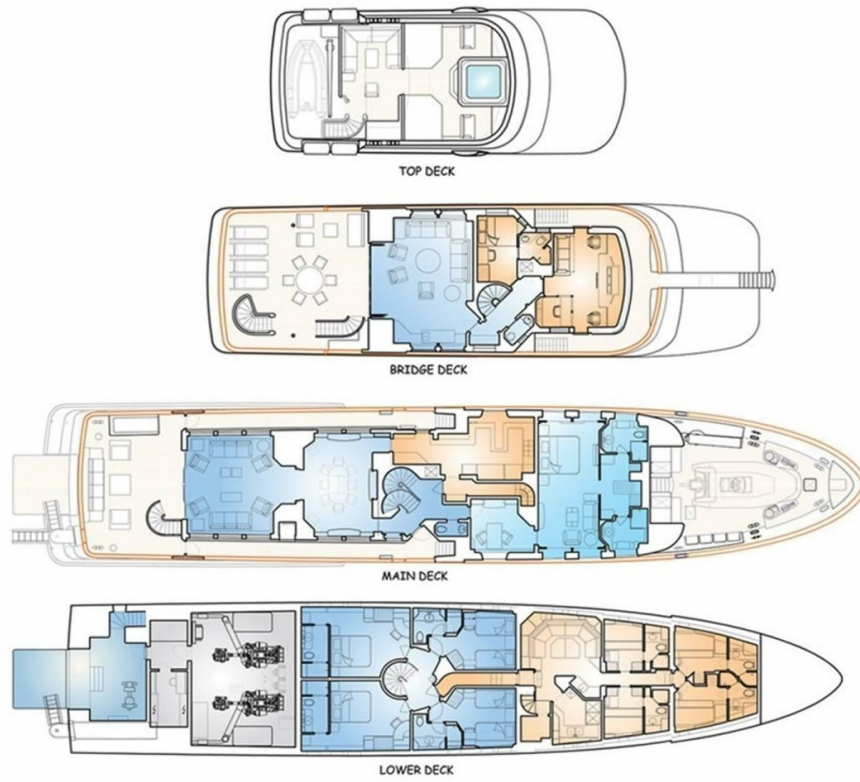


At anchor



At anchor

FABULOUS CHARACTER



Deck plans



INFO@STARSHIPYACHTS.COM • WWW.STARSHIPYACHTS.COM
+852 2555-2805 • 24 PO CHONG WAN, SHUM WAN RD. ABERDEEN - HK