

## ROLA



# ROLA



Summer rate per week (low/high)

**EUR 161,000 / EUR 189,000**

Summer cruising

**East Mediterranean**

Built

**2006 (refitted 2022), ISA Yachts, Italy**

Length

**47.5m (155.8ft)**

Beam

**8.6m (28.2ft)**

Draft

**2.6m (8.5ft)**

Gross Tonnage

**498**

Maximum speed

**16.8 knots**

Cruising speed

**14.5 knots**

Winter rate per week (low/high)

**EUR 161,000 / EUR 189,000**

Winter cruising

**Please enquire**

Guests

**11**

Crew

**9**

No. of guest cabins

**5 cabins (3 × double, 1 × double/twin, 1 × twin, 1 × additional berths)**

Engines

**2 × 2,400hp MTU**

Fuel consumption at cruising speed

**670 litres per hour**

## Notes

Fully licensed for charters in Greek waters.

Not available for charter to US residents while in US waters

## About ROLA

---

**With a refreshed interior and exciting toy inventory to explore, ROLA is always a charter hit. From her expansive deck spaces and sun deck jacuzzi to her comfy, spacious lounges and fresh, bright cabins, she has a plenty to offer for a yacht of her size.**

Start the day with a refreshing dip in the sea off ROLA's swim platform before making your way to the main deck aft for breakfast. Freshly prepared dishes are made to order, accompanied by a mouth watering selection of local fruit, cheeses and meats.

Mornings are great for watersports and ROLA has a mighty selection to choose from. As well as jetskis, inflatables and paddleboards and the SeaBob sea scooters offer great underwater fun. Spectators may relax on the comfortable sofas of the upper deck aft to watch the action below or make their way down to the beach club for a front row seat.

Enjoy a relaxed lunch on the sun deck, where the nearby bar has great views of the anchorage. A large bank of sun pads is a few steps away, inviting you to soak up some rays then cool off in the adjacent jacuzzi. Those still hungry for adventure can tour the local bays and villages by tender with ROLA's knowledgeable captain and crew.

Back on board, freshly baked cakes are served in the sky lounge, with a movie playing on the 65in TV, while ROLA moves to a nearby port town for the evening. On arrival, pop ashore for a little retail therapy, or head to the main lounge for a quiet moment with a drink at the bar or read on the comfy sofas.

ROLA is beautifully presented thanks to her refit in 2022, which enchanted her aesthetic Cristiano Gatto design. High ceilings and clever lighting lend a sense of space while her decor is elegant, modern and understated. The master suite has a full beam bathroom with a spa bath, and two VIP suites, a double cabin and a twin cabin complete the accommodation for 11 guests. Zero speed stabilisers ensure total comfort at anchor.

Make your way to the sun deck's bar where sundowner cocktails and canapes are served in a setting away from passers-by; the elevated views cannot fail to impress. A delicious dinner is served on the main deck aft before you head into town to sample the local nightlife or return to the atmospheric sun deck for a private party on board.

## Key features

---

**Extensive refit in 2022**

---

**Beautiful interiors by Cristiano Gatto Design**

---

**Zero speed stabilisers to reduce any rolling motion while at anchor**

---

**Spa/Jacuzzi pool**

---

**Large sun deck**

---

**Fold down bathing platform/tender side launching to port and starboard**

---

**Extended decks for outdoor dining**

---

## Tenders & toys



2 x Tenders



1 x Deck jacuzzi



RYA training centre for jetskis & waverunners



1 x Stand up jetski



1 x SeaBob



2 x Flyboards



1 x Hoverboard



2 x Stand up paddleboards



Wakeboard



Waterskis



Inflatable tows



Snorkelling gear

## Fitness equipment

Please contact your Burgess broker for details.

Please note that tenders, toys and fitness equipment are subject to regular upgrades and changes. Contact a Burgess broker for the latest information.



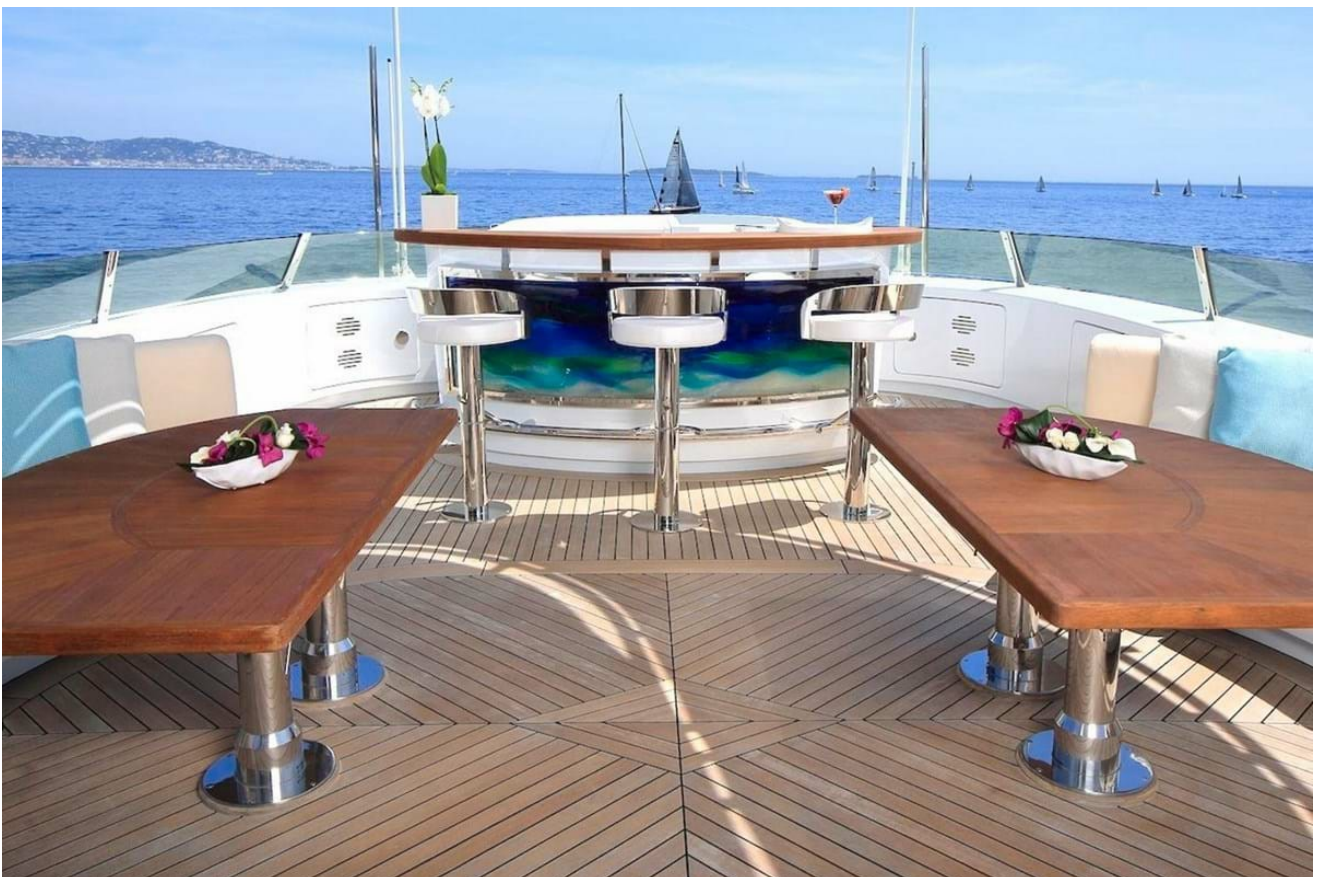
Swim platform



Sun deck aft jacuzzi



Sun deck aft loungers



Sun deck forward bar

# ROLA



Upper deck aft dining area



Sky lounge



Sky lounge



Main deck aft seating area





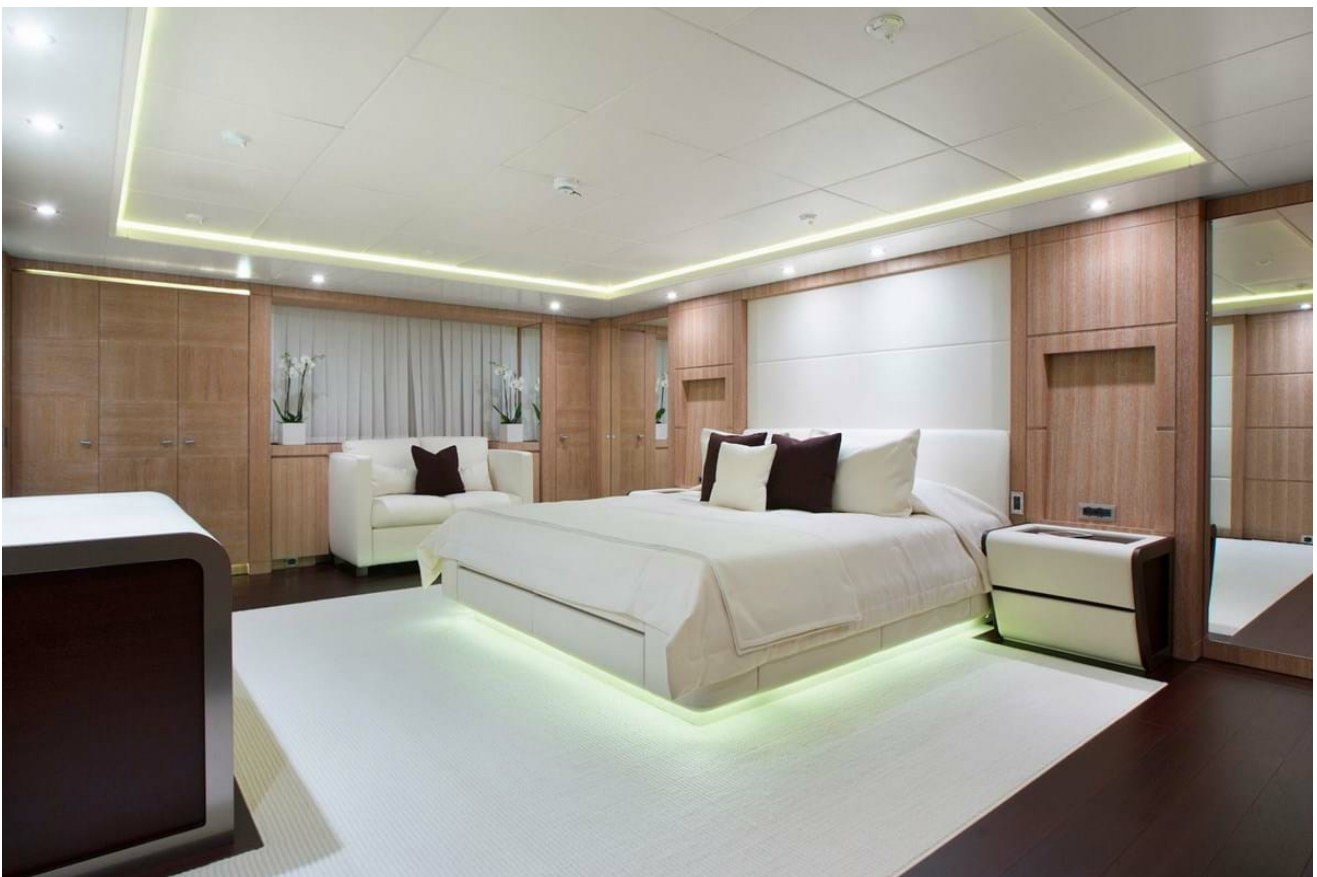
Main deck aft seating area



Main deck lounge



Main deck lounge



Main deck forward master cabin



Master bathroom en suite



Lower deck starboard VIP cabin



VIP bathroom en suite



Lower deck port double cabin

# ROLA

---



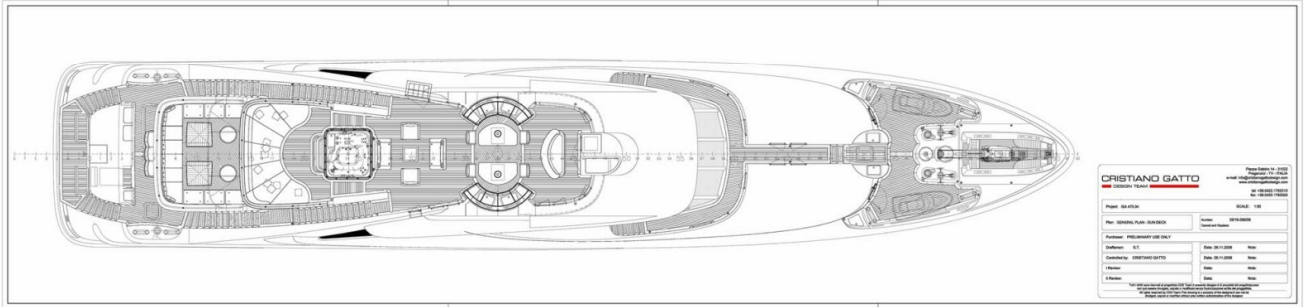
Stern view



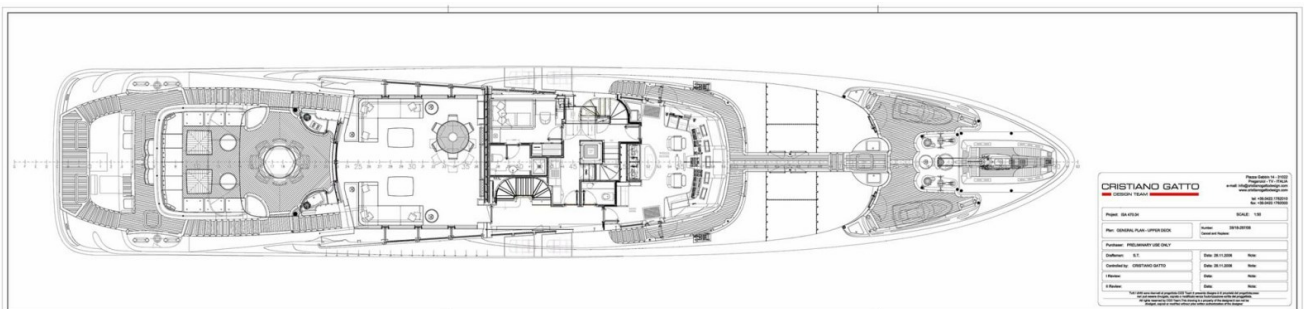
Cruising



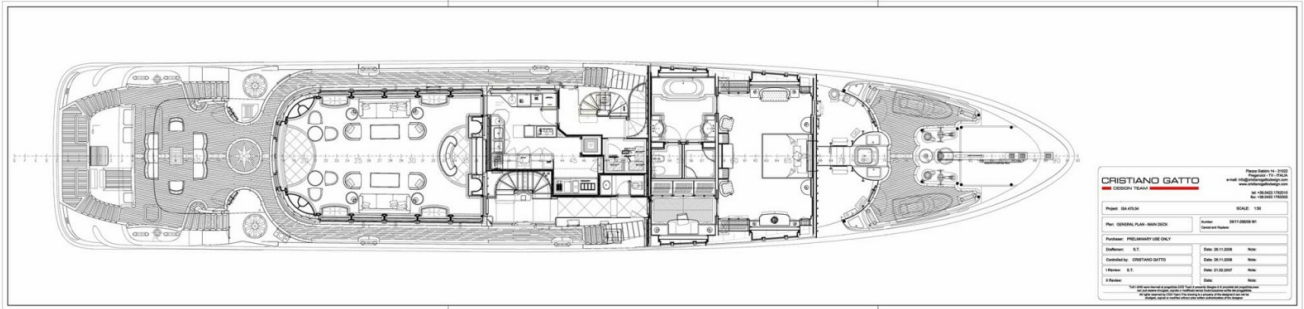
Swim platform



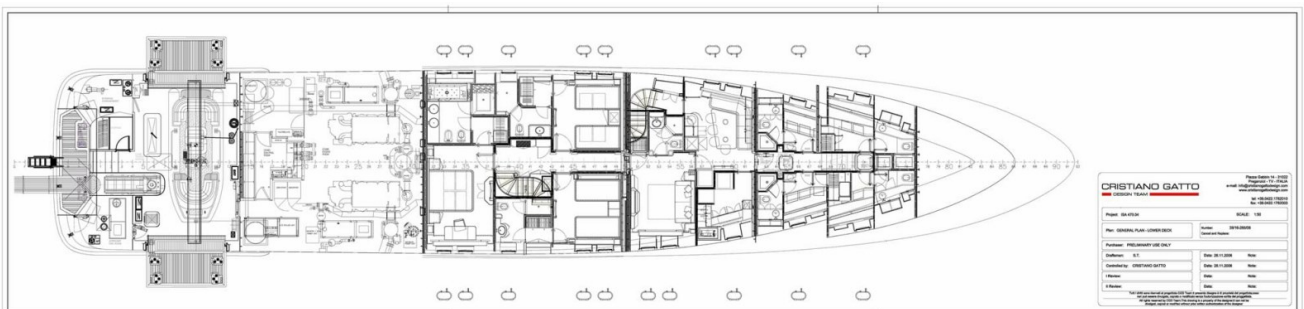
ROLA sun deck



ROLA upper deck



ROLA main deck



ROLA lower deck





INFO@STARSHIPYACHTS.COM • WWW.STARSHIPYACHTS.COM  
+852 2555-2805 • 24 PO CHONG WAN, SHUM WAN RD. ABERDEEN - HK