

## RUYA



# RUYA



Summer rate per week (low/high)

**EUR 175,000 / EUR 196,000**

Summer cruising

**West Mediterranean**

Built

**2016 (refitted 2021), Alia Yachts, Turkey**

Length

**41.4m (135.8ft)**

Beam

**8.9m (29.2ft)**

Draft

**2.5m (8.2ft)**

Gross Tonnage

**499**

Maximum speed

**14 knots**

Cruising speed

**10 knots**

Winter rate per week (low/high)

**USD 175,000 / USD 189,000**

Winter cruising

**Caribbean & Bahamas**

Guests

**10**

Crew

**8**

No. of guest cabins

**5 cabins (3 × double, 2 × double/twin, 2 × additional berths)**

Engines

**2 × 1,000hp Caterpillar**

Fuel consumption at cruising speed

**120 litres per hour**

## Notes

Not available for charter to US residents while in US waters

## About RUYA

---

**Delivered in 2016, the 41.4m (135.9ft) motor yacht RUYA is a gleaming gem on the charter market. Guests love her award-winning, thoroughly original and truly outstanding Australian outback-inspired interior by famed designer Sam Sorgiovanni.**

Built to celebrate al fresco living, she has a huge 93sqm (1,001sqft) sun deck complete with bar, BBQ, open-air dining shaded by the hardtop, a glass-fronted 10-person jacuzzi for soaking in the sun and gym equipment for morning workouts. Glass screens keep you draft-free without spoiling the views.

The hydraulic swim platform gives you step-free access to the water and the beach club where you can relax and snack between swims. She has an armada of watertoys to keep everyone's adrenaline levels up and the yacht is also an RYA-approved training centre so you can use the toys without a licence.

Inside, her interior makes use of indigenous material like bamboo and Australian silky oak to create a relaxed, comforting environment. Floor-to-ceiling glass in the main lounge and formal dining room create a remarkable sense of openness and that flows into the main deck aft lounge area. There's shaded open-air dining and a sun lounge on the upper deck aft and inside is a home cinema with an 80in screen and surround sound for movie nights.

She welcomes 10 guests in five finely appointed suites. There is a full-beam master suite forward on the main deck, wonderfully illuminated by large picture windows, with a private office and his-and-hers bathroom with bath and shower area. Two double cabins and two twin cabins on the lower deck complete her accommodation.

This is a yacht that intimately connects her guests to their environment, from the sun deck to the beach club, served by a crew that always gets brilliant feedback. For fans of the great outdoors, look no further than RUYA.

## Key features

---

**Extensive 7-month winter refit 2020-21 elevating her to 'brand-new' condition**

---

**Impressive interior volume of 499GT usually found on much larger yachts**

---

**Generous 93sqm sun deck with large jacuzzi**

---

**Thoroughly original Sam Sorgiovanni interior design**

---

**Vast hydraulic swim platform**

---

**Low fuel consumption**

---

**Zero speed stabilisers to reduce any rolling motion while at anchor**

---

## Tenders & toys



1 x Tender



1 x Deck jacuzzi



RYA training centre for jetskis & waverunners



2 x Waverunners



2 x SeaBobs



3 x Kayaks



3 x Stand up paddleboards



Wakeboard



Waterskis



Scuba diving equipment



Snorkelling gear

## Fitness equipment



Free weights



Upright stationary bike



Yoga mats

Please note that tenders, toys and fitness equipment are subject to regular upgrades and changes. Contact a Burgess broker for the latest information.



Tender



Tender



Main deck lounge



Main deck lounge



Main deck dining area



Main deck dining area



Sky lounge

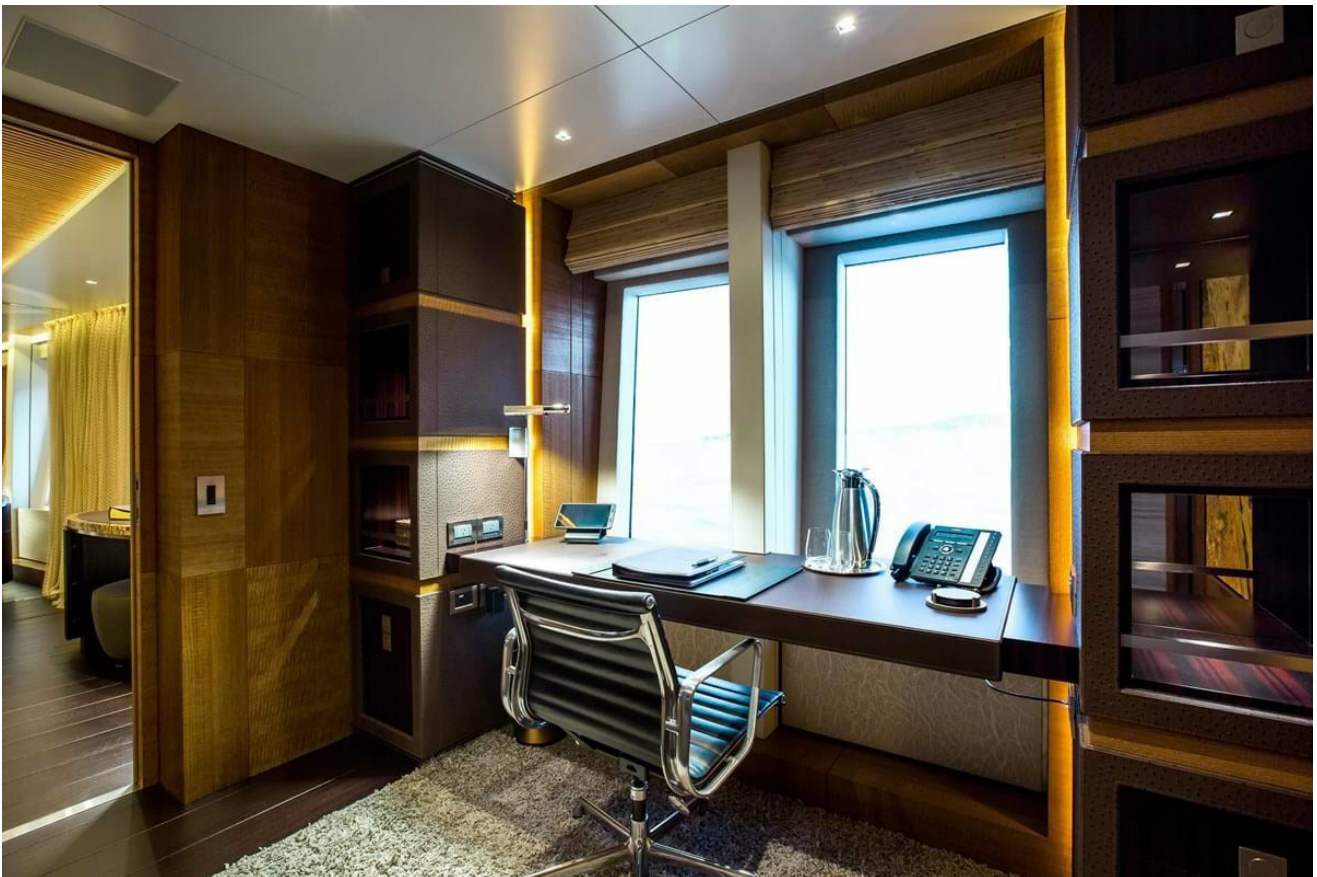


Upper deck lounge





Master cabin



Master cabin desk



Master cabin en suite bathroom



Master cabin en suite bathroom



Double cabin



Double cabin en suite bathroom



Twin cabin



Twin cabin en suite bathroom



Main deck outdoor dining



Snacks



Sun deck



Sun deck



Snacks



Dining



Sun deck lounge



Sun deck



# RUYA



Beach club



Beach club



Watersports



Running

# RUYA

---



Running



INFO@STARSHIPYACHTS.COM • WWW.STARSHIPYACHTS.COM  
+852 2555-2805 • 24 PO CHONG WAN, SHUM WAN RD. ABERDEEN - HK