



WANDERLUST



WANDERLUST



Summer rate per week (low/high)

USD 960,000 / USD 1,100,000

Summer cruising

South Pacific - Tahiti

Built

2022, SILVERYACHTS, Australia

Length

85.3m (279.8ft)

Beam

11m (36.1ft)

Draft

3.4m (11.2ft)

Gross Tonnage

1,561

Maximum speed

23 knots

Cruising speed

14 knots

Winter rate per week (low/high)

USD 960,000 / USD 1,100,000

Winter cruising

Indian Ocean

Guests

12

Crew

24

No. of guest cabins

8 cabins (6 × double, 2 × double/twin)

Engines

2 × 3,328hp MTU

Fuel consumption at cruising speed

500 litres per hour

CURRENT OFFER

Take advantage of WANDERLUST's exclusive offer and secure an unforgettable charter experience in French Polynesia. Exceptional flat rate of USD 800,000 p/w instead of USD 1,100,000 p/w. Book before 20 June for charters between 20 June and 20 August.

Notes

Registered under the Yacht Engaged in Trade scheme (YET). All Mediterranean charters must start in either the South of France, Monaco or Corsica. For all charters, the principal charterer must be a non-EU resident.

WANDERLUST

About WANDERLUST

A new secret weapon has been launched onto the charter market - the 85.3m WANDERLUST. The philosophy behind this extraordinary sports activity vessel (SAV) is the innovative balance of performance, luxury and efficiency.

WANDERLUST is a superb platform for scuba diving and snorkelling, tailor-made for avid lovers of the underwater world, so expect to find her cruising world-class dive locations like the Indian Ocean and South Pacific. Guests are guaranteed to enjoy bountiful, healthy reefs, abundant marine life and bucket-list pelagics.

In performance terms, her hydrodynamic efficiency and state-of-the-art propulsion system means she cruises easily at 17 knots and tops out at 23 knots. This expands your cruising range and dive-site options considerably while keeping fuel bills and emission down. Her zero speed stabilisers mean everyone on board enjoys a steady horizon.

One of the most remarkable features of this yacht and the widest part of it: The Loft. This is a winter garden space with floor-to-ceiling privacy glass that slides away to create a remarkable open-air shaded terrace.

It's aft of the high-ceiling sky lounge with huge screen on which guests can enjoy sports, movie nights and highlights of the day's filmed adventures. The ceiling itself is a huge screen, like those in The Loft and the heli-hangar, that can display any image or video you want - you can even bring the Northern Lights inside should you wish.

Another signature is the 400sqm (4,300sqft) aft deck - the space is over 30m (100ft) long. This is where two of the yacht's three tenders, a 7m (23ft) beachlander and an 8.3m (27.2ft) Explorer, are stowed. The third is a Windy SR52 chase tender capable of 45 knots.

The sides of the aft deck fold down to open up the views completely and create even more versatile space for entertainment, relaxation and games like basketball, table tennis or a golf driving range with fish-food balls.

Built to deliver the holiday of a lifetime for up to 12 guests in eight suites, she has everything an amazing charter yacht needs. The sun deck has a glass-fronted jacuzzi and an intimate, sheltered open-air dining space aft.

The upper deck offers more outdoor dining with a bar and BBQ for that chef's table experience and a huge sun lounge aft. On the main deck there's an outdoor cinema in the hangar, one of three on board, which is also fitted with sound, media and light systems for disco nights.

Her crew is dedicated to making every day on board amazing, with a particular flair for beach set-ups and watersports days. Zero speed stabilisers for comfort and a toy locker packed with Sea-Doos, SeaBobs, sailing dinghies, fliteboards, transparent kayaks, paddleboards and a host of tow toys, and you have an unbeatable package.

Be one of the first to experience this game-changing superyacht

Key features

Owner's deck with loft

Versatile winter garden

Hangar area that can double as a multipurpose space

Sun deck glass-fronted jacuzzi

400sqm (4,300sqft) signature aft deck

Offered for the first time on the charter market

Tenders & toys



3 x Tenders



2 x Sailing dinghies



1 x Deck jacuzzi



4 x Waverunners



4 x SeaBobs



4 x eFoils



2 x Kayaks



4 x Stand up paddleboards



Wakeboard



Waterskis



Inflatable tows



Snorkelling gear

Fitness equipment



Free weights



Resistance bands



Training bench



Treadmill



Upright stationary bike

Please note that tenders, toys and fitness equipment are subject to regular upgrades and changes. Contact a Burgess broker for the latest information.

WANDERLUST



WANDERLUST



Owner's deck - Loft area

WANDERLUST



Owner's deck - Loft area



Owner's deck - Loft detail

WANDERLUST



Loft - cinema set up



Loft - interactive ceiling

WANDERLUST



Winter garden lounge

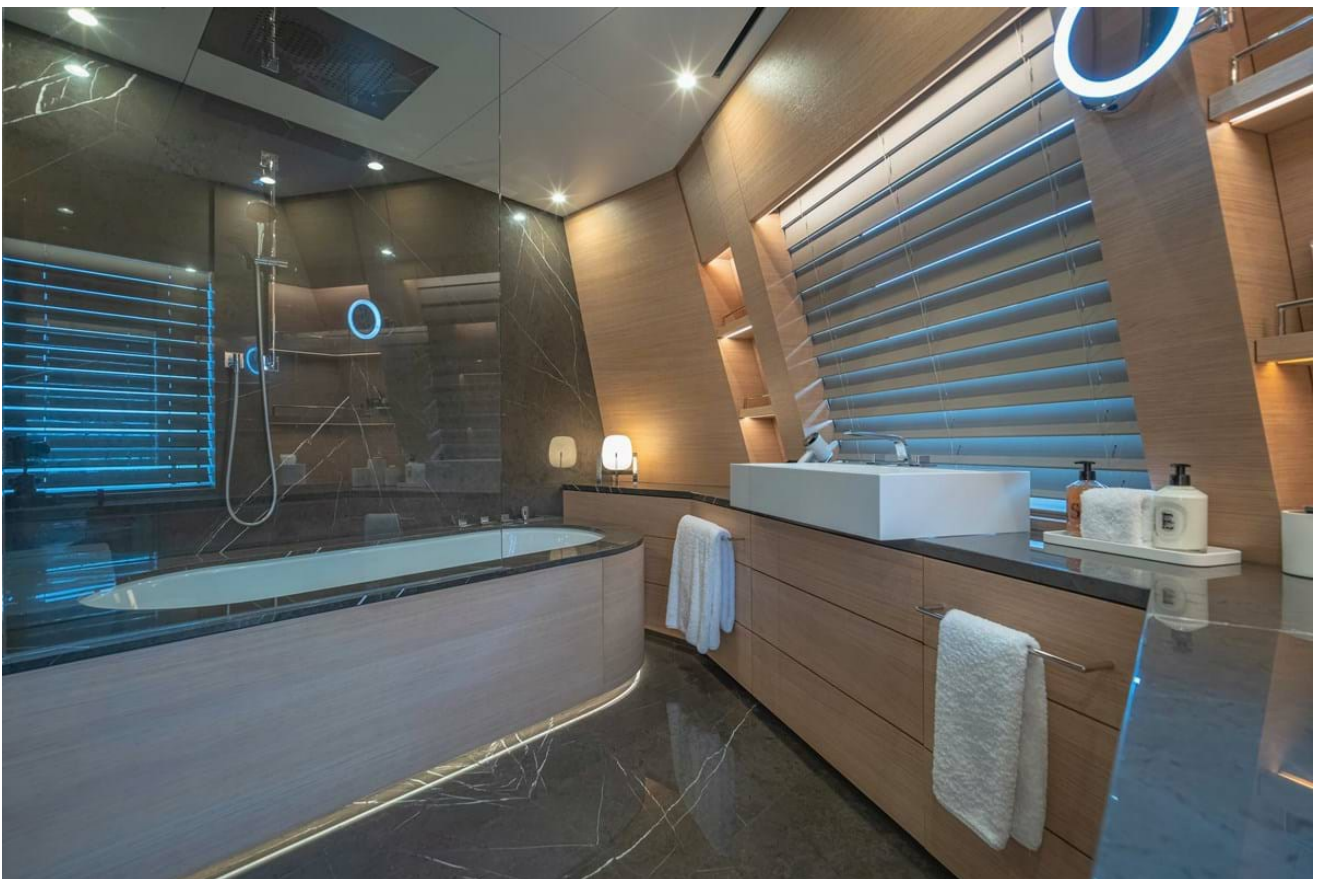


Master cabin

WANDERLUST



His en suite shower room



Hers en suite bathroom

WANDERLUST



Main deck VIP cabin

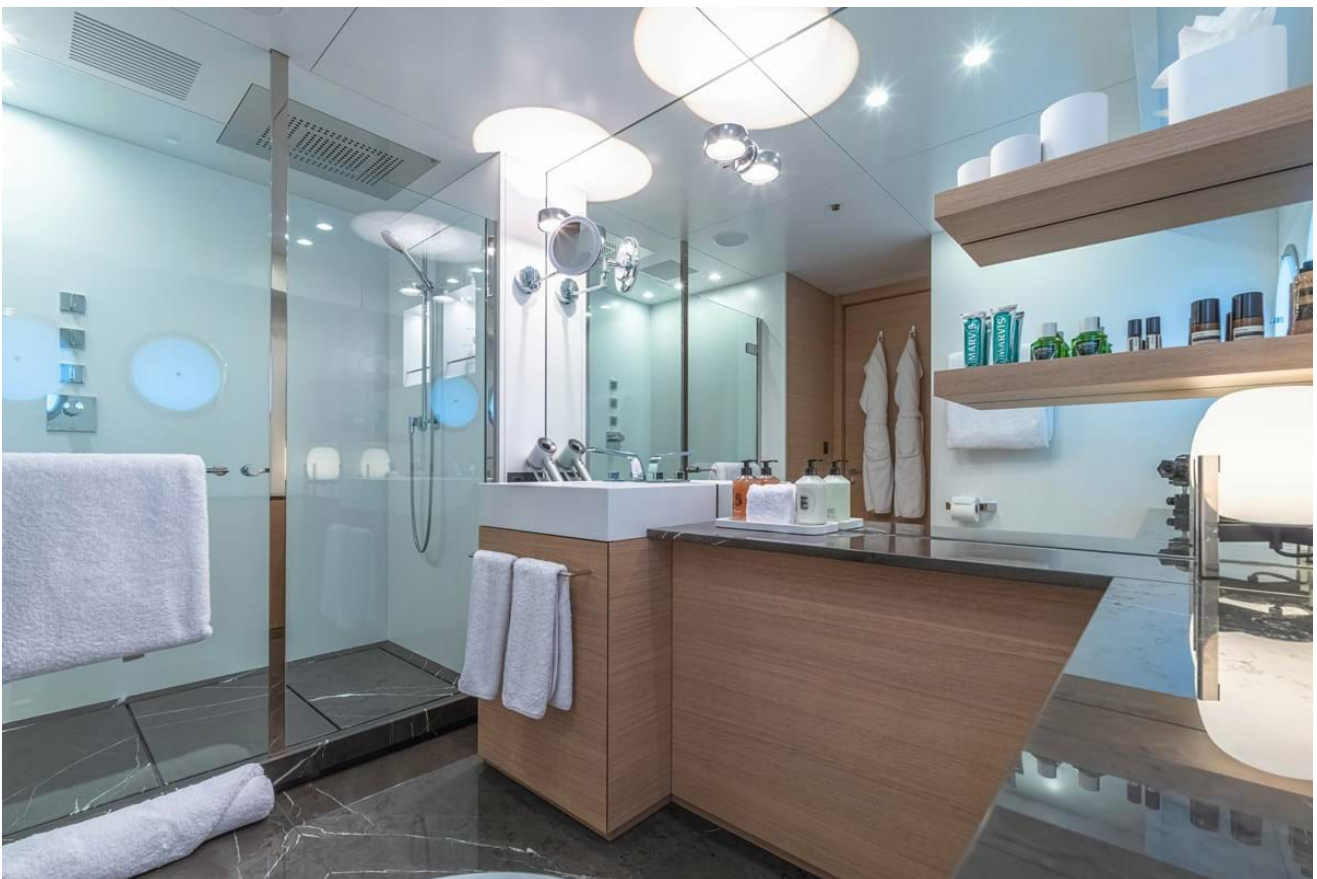


Main deck VIP cabin

WANDERLUST



VIP cabin en suite shower room



VIP cabin en suite shower room

WANDERLUST



Main deck double cabin (convertible into twin)



Main deck double cabin (convertible into twin)

WANDERLUST



Corridor



Hangar area

WANDERLUST



Bridge



Watersports & tenders

WANDERLUST



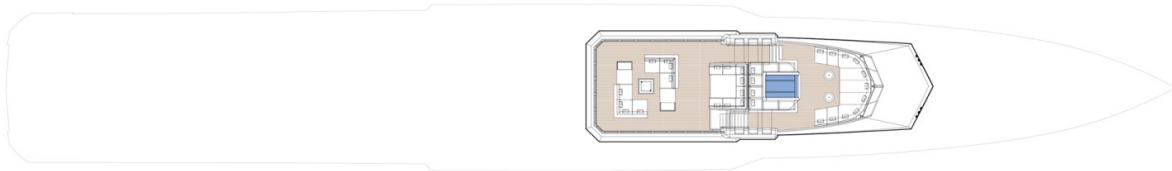
WANDERLUST



At anchor

WANDERLUST

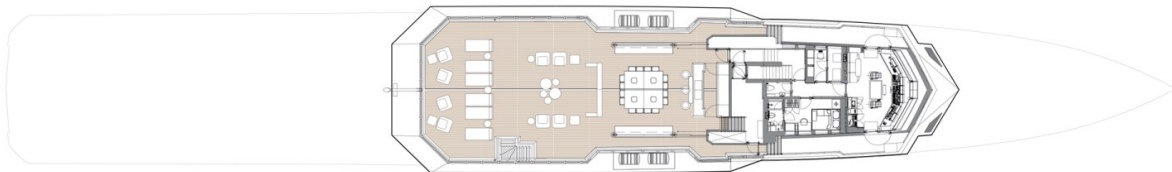
SUN DECK



■ GUEST AREAS ■ MASTER SUITE ■ VIP SUITES ■ GUEST CABINS ■ MASTER SUITE OFFICE ■ JACUZZI ■ WINTER GARDEN

Sun deck

BRIDGE DECK



■ GUEST AREAS ■ MASTER SUITE ■ VIP SUITES ■ GUEST CABINS ■ MASTER SUITE OFFICE ■ JACUZZI ■ WINTER GARDEN

Bridge deck

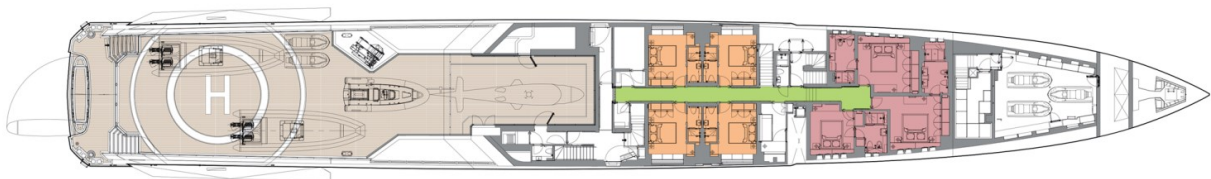
OWNER'S DECK



■ GUEST AREAS ■ MASTER SUITE ■ VIP SUITES ■ GUEST CABINS ■ MASTER SUITE OFFICE ■ JACUZZI ■ WINTER GARDEN

Owner's deck

MAIN DECK



■ GUEST AREAS ■ MASTER SUITE ■ VIP SUITES ■ GUEST CABINS ■ MASTER SUITE OFFICE ■ JACUZZI ■ WINTER GARDEN

Main deck



INFO@STARSHIPYACHTS.COM • WWW.STARSHIPYACHTS.COM
+852 2555-2805 • 24 PO CHONG WAN, SHUM WAN RD. ABERDEEN - HK