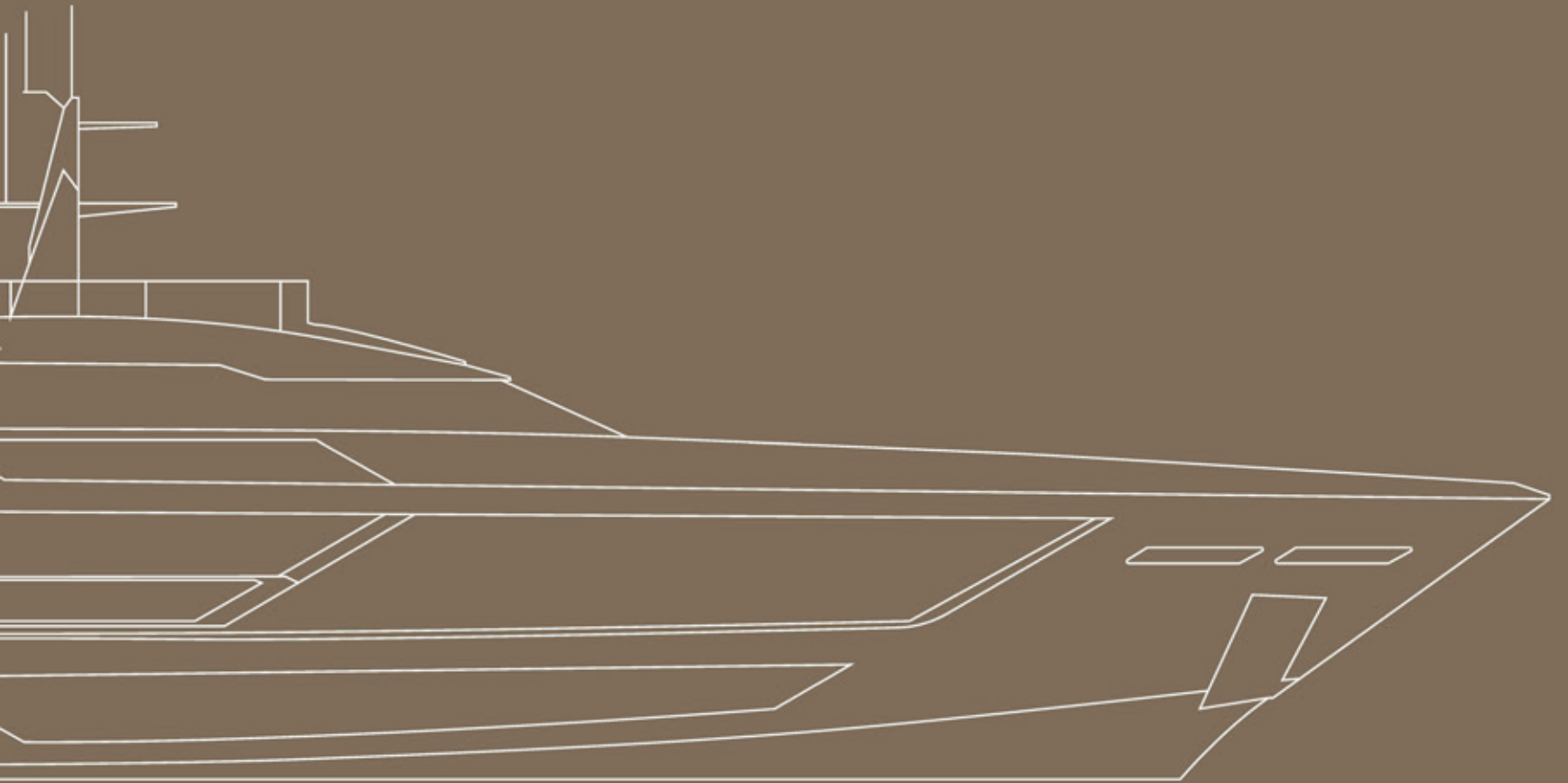


Custom Line Saetta 128'

Project



CUSTOM LINE

Custom Line Saetta 128'

Project

NAVAL ARCHITECTURE

by Ferretti Group Engineering

EXTERIOR DESIGN

by SY Design

INTERIOR ARCHITECTURE

by Antonio Citterio Patricia Viel

Beyond the line.

Some people stop
at the superficial;
we strive to go beyond.
Because only those
who cruise know
where to find the sublime:
beyond the surface.

Beyond the Line.





There's a genius to cruising.
Each voyage becomes
a **masterwork**.





Performance

22,5 knots

maximum speed

19 knots

cruising speed



A dynamic, youthful
and fresh profile for a yacht
waiting to be discovered:
Custom Line Saetta 128'.





A new icon inscribed upon the waves. The avant-garde masterpiece that every owner desires.

Space

3

Decks

39,75

Length Over All

7,58

Beam Over All

Three decks
with generous spaces
to combine comfort
and practicality.







Interiors by Antonio Citterio Patricia Viel

ACPV ARCHITECTS Antonio Citterio Patricia Viel has an interior design concept based on large volumes on all 3 decks, stylistic elegance, livability, timeless classicism, harmony with the marine environment and direct contact with the sea. All this while maintaining a contemporary identity.



MAIN DECK | AFT DECK



MAIN DECK | AFT DECK



MAIN DECK | MAIN SALON



A flow of **sophisticated interior spaces** and wide outdoor areas. A spatial continuity that amplifies the sense of connection with the sea.





MAIN DECK | MAIN SALON





MAIN DECK | OWNER'S SUITE



This is the place to be.
This is **your place**. A haven
of beauty that knows no limits.



MAIN DECK | OWNER'S SUITE



Relish the harmony of cruising,
where **the elegance of forms**
meets the finest materials.



MAIN DECK | OWNER'S SUITE



UPPER DECK | AFT DECK





UPPER DECK | SKY LOUNGE





**Timeless design, refined architecture
and clean, contemporary lines**
suffuse every alluring detail.



Specifiche tecniche Preliminary

1 MOTORIZZAZIONE

2 x MTU 16V 2000 M96L potenza 2638 mhp / 1939 kW a 2450 giri/min

| 2 VELOCITÀ (nodi) | MTU 2638 |
|--------------------------------|----------|
| Velocità massima | 22,5 |
| Velocità di crociera | 19 |
| Velocità di crociera economica | 11 |

| 3 AUTONOMIA (miglia nautiche) | MTU 2638 |
|--------------------------------|----------|
| Velocità massima | 320 |
| Velocità di crociera | 400 |
| Velocità di crociera economica | 1000 |

4 DIMENSIONI PRINCIPALI

| | | | |
|--|---|----|---------------|
| Loa = Lunghezza fuori tutto ISO 8666 | 39,75 | m | 130 ft. 5 in. |
| Lh = Lunghezza di costruzione ISO 8666 | 39,66 | m | 130 ft. 1 in. |
| Larghezza massima | 7,58 | m | 24 ft. 10 in. |
| Stazza Lorda | 290 | GT | |
| Numero massimo di persone imbarcabili | 20 | | |
| Classificazione | RINA Class Certificate for Pleasure Yachts, C * HULL • MACH, Y, Unrestricted Navigation | | |

Technical specifications Preliminary

1 ENGINES

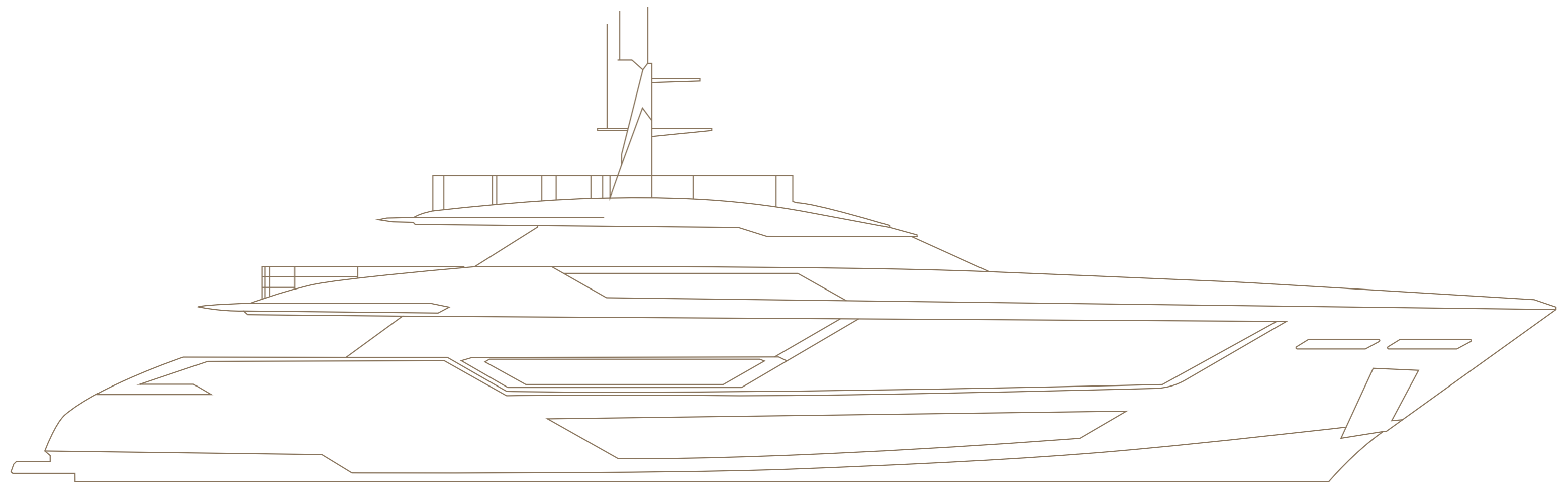
2 x MTU 16V 2000 M96L potenza 2638 mhp / 1939 kW a 2450 giri/min

| 2 SPEED (KNOTS) | MTU 2638 |
|-------------------------|----------|
| Maximum speed | 22,5 |
| Cruising speed | 19 |
| Economic cruising speed | 11 |

| 3 RANGE (NAUTICAL MILES) | MTU 2638 |
|--------------------------|----------|
| Maximum speed | 320 |
| Cruising speed | 400 |
| Economic cruising speed | 1000 |

4 MAIN SIZES

| | | | |
|--|---|----|---------------|
| Loa = overall length (standard ISO 8666) | 39,75 | m | 130 ft. 5 in. |
| Lh = construction length (standard ISO 8666) | 39,66 | m | 130 ft. 1 in. |
| Maximum beam | 7,58 | m | 24 ft. 10 in. |
| Gross Tonnage | 290 | GT | |
| Maximum number of persons on board | 20 | | |
| Classification | RINA Class Certificate for Pleasure Yachts, C * HULL • MACH, Y, Unrestricted Navigation | | |



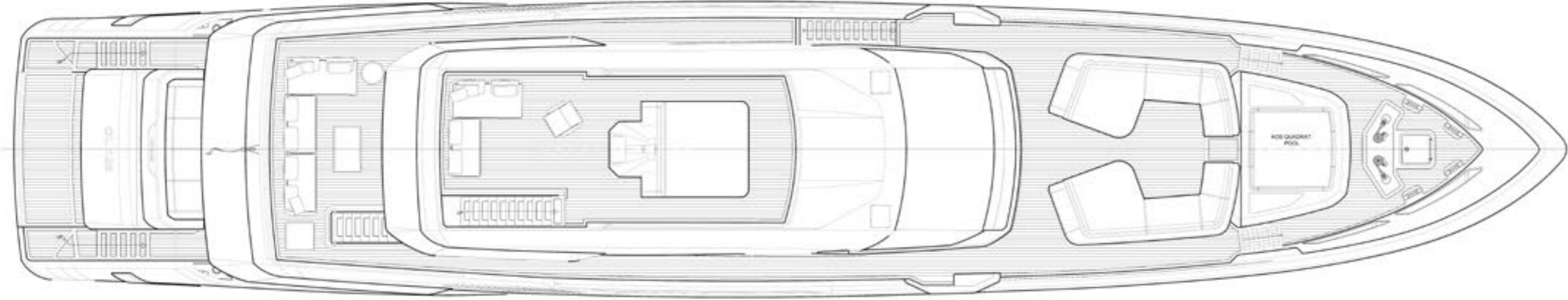
Custom Line Saetta 128'



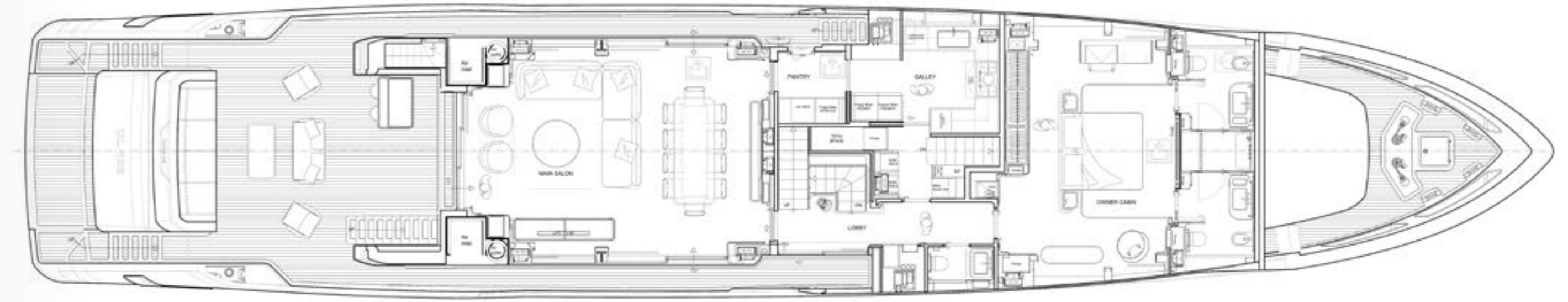
**YOUR STYLE MEETS
CUSTOM LINE ATELIER EXCELLENCE**

The Custom Line Atelier is our strategic team of talented designers who support owners throughout the process of developing their yacht and tailoring it to their personal tastes. Make the yacht a unique masterwork by signing it with your style and inspirations for an ambience that totally represents you.

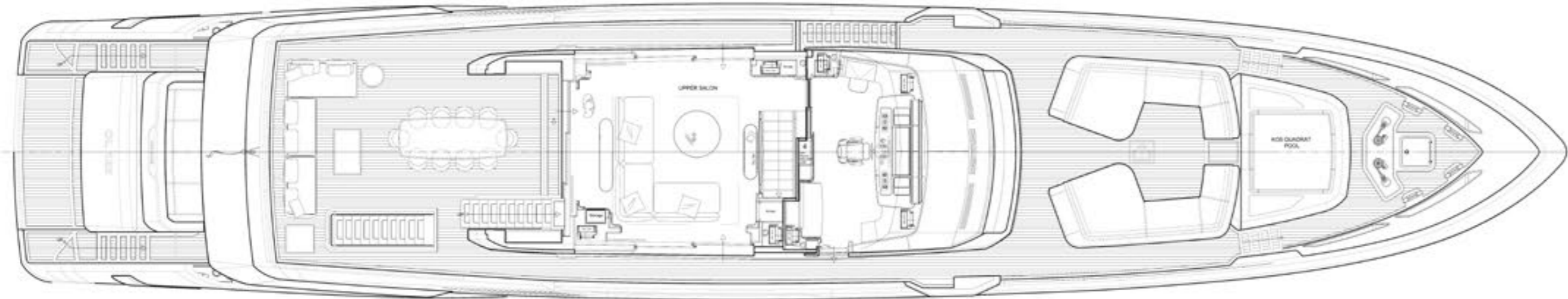
Sun deck



Main deck



Upper deck



Lower deck






FERRETTIGROUP

WALLY

 FERRETTIYACHTS

PERSEUS

Itama

Riva

CRN

CUSTOM LINE

LEGAL NOTICE

1. This brochure does not constitute an offer by the shipyard to any person under any circumstances whatsoever, nor may it be incorporated into any contract.

2. All the information in this brochure, including without limitation all technical and performance data, illustrations and drawings, has no contractual effect. That information refers to European standard models of motor yachts built by the shipyard and is accurate at the brochure's date of issue. The only valid technical description or reference content for an individual motor yacht is the exact specification stated at the time of purchase. Therefore, the only information that is binding on the seller is that contained in the sale agreement and associated manual. This brochure is based on information available at the date of issue. Notwithstanding Ferretti Group's best efforts to ensure accuracy, the information in this brochure may not cover all details or subsequent changes, nor does it claim to accurately foresee or detail all possible scenarios. Displays, photos, diagrams, designs or examples in this brochure are reproduced solely and exclusively to highlight the information contained. Each yacht is different, so the shipyard declines any and all liability for any use thereof on the basis of the information in this brochure.

3. The brochure and its contents must not be copied or reproduced in their entirety or in part.

4. Sale of this brochure is not permitted.

Technical drawings & renderings:

Ferretti Group Engineering
SY Design
Antonio Citterio Patricia Viel

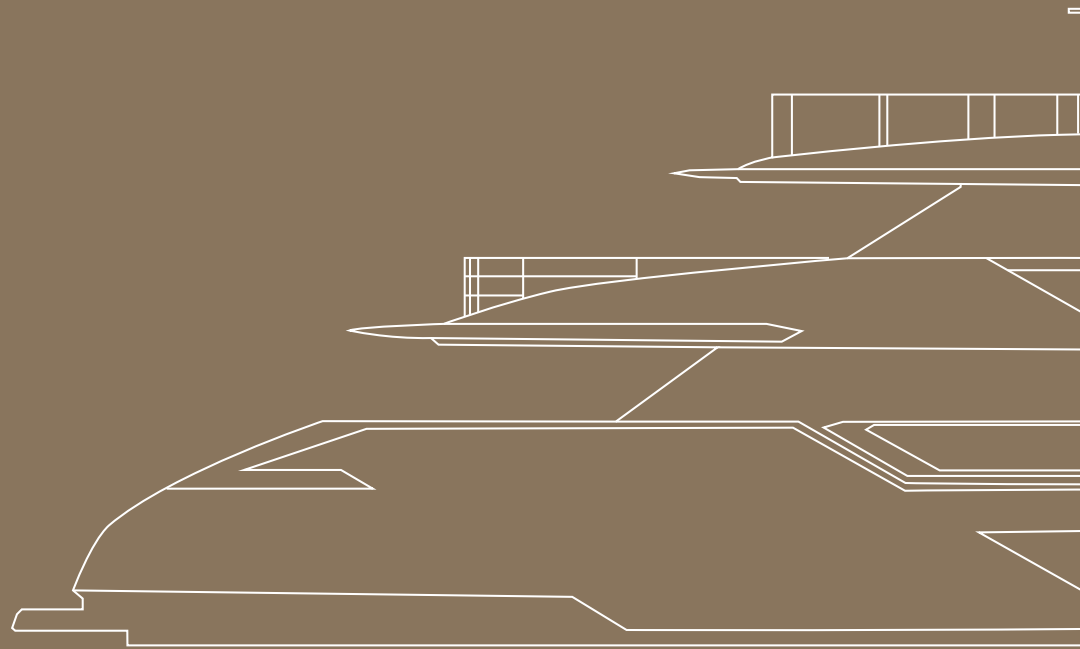
Concept and art direction:

Armando Testa

FERRETTI GROUP SUPERYACHT YARD – CUSTOM LINE

Via Enrico Mattei, 26 · 60125 – Ancona, Italy

customline-yacht.com



CUSTOM LINE

BEYOND THE LINE