

Navetta 33

CUSTOM LINE

Navetta 33

CUSTOM LINE

BEYOND THE LINE

Beyond the line.

Some people stop at the superficial;
we strive to go beyond.

Because only those who cruise
know where to find the sublime:
Beyond the surface.

Beyond the Line.

See another sea with

Custom Line Navetta 33.

A reflection of the owner's personality,
she's more than a yacht;
she's a unique masterpiece.
Because cruising is an art.
The art of being different.



Some
people see
lines;



we see an
incredible painting.







Cruise into the rest of **your life.**



Dimensions

33 metres

overall length

7,52 metres

maximum beam

4 decks

Elegance is not about
being noticed. It's about
being unforgettable.





Smooth as a wave,
monumental
as a **sculpture**.





Custom Line Navetta 33
savour **infinite perspectives.**





Fact&Figures

1850 nm

range at 10 knots

16 knots

maximum speed

12 knots

cruising speed

You choose

where your day begins.



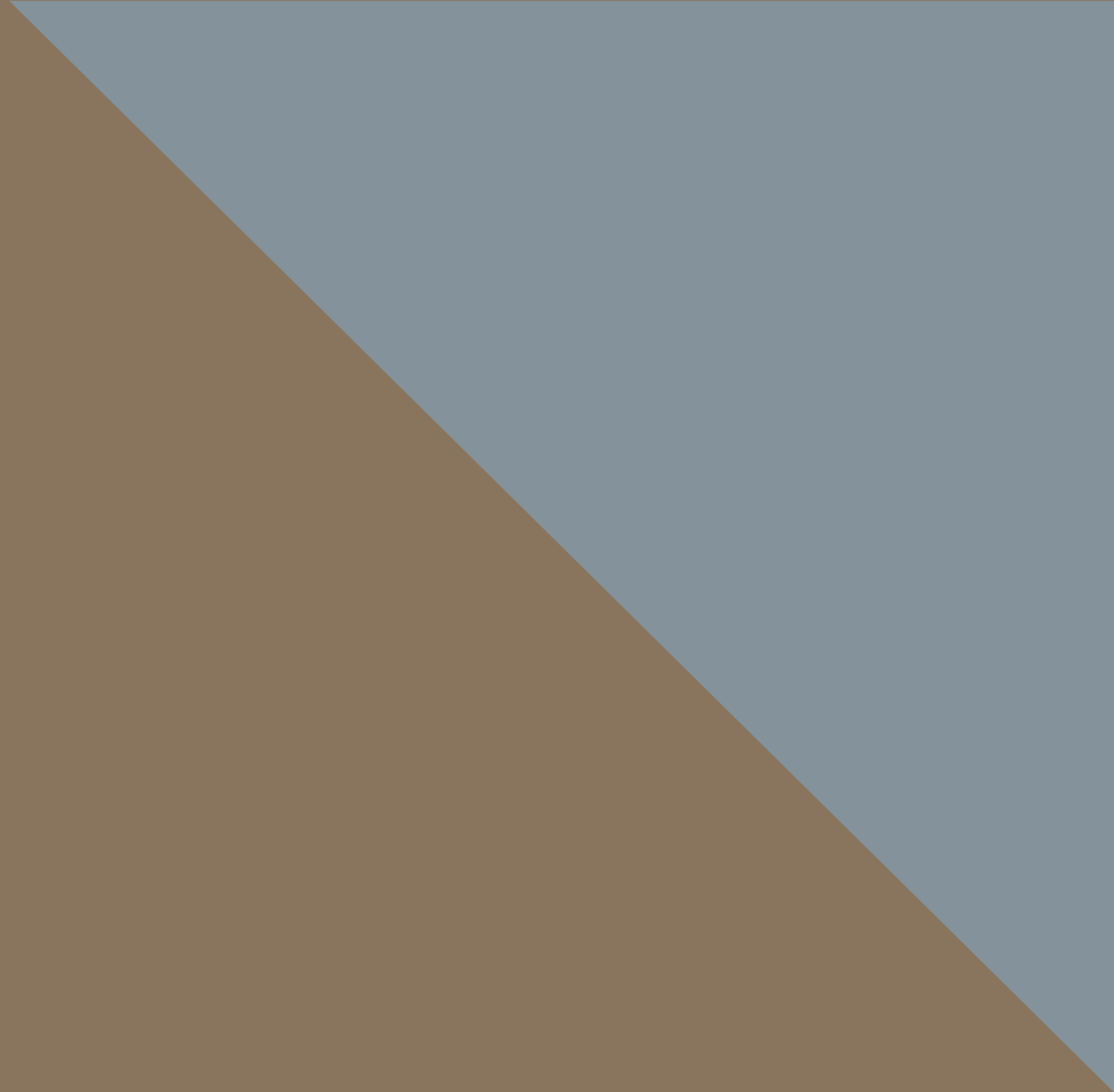
Beyond the horizon,
beyond your destination,
beyond the concept
of **cruising**.





Sophisticated, beautiful, breathtaking.
This is **your Navetta 33.**

**Some
people see
a shape**



we see a beautiful
sculpture.







Enjoy the sea
in inimitable style.
Yours.





A **unique creation**
of boundless beauty
and exquisite comfort.





Amazing
panoramic views

360°

panorama

1

majestic sliding window in the owner's suite

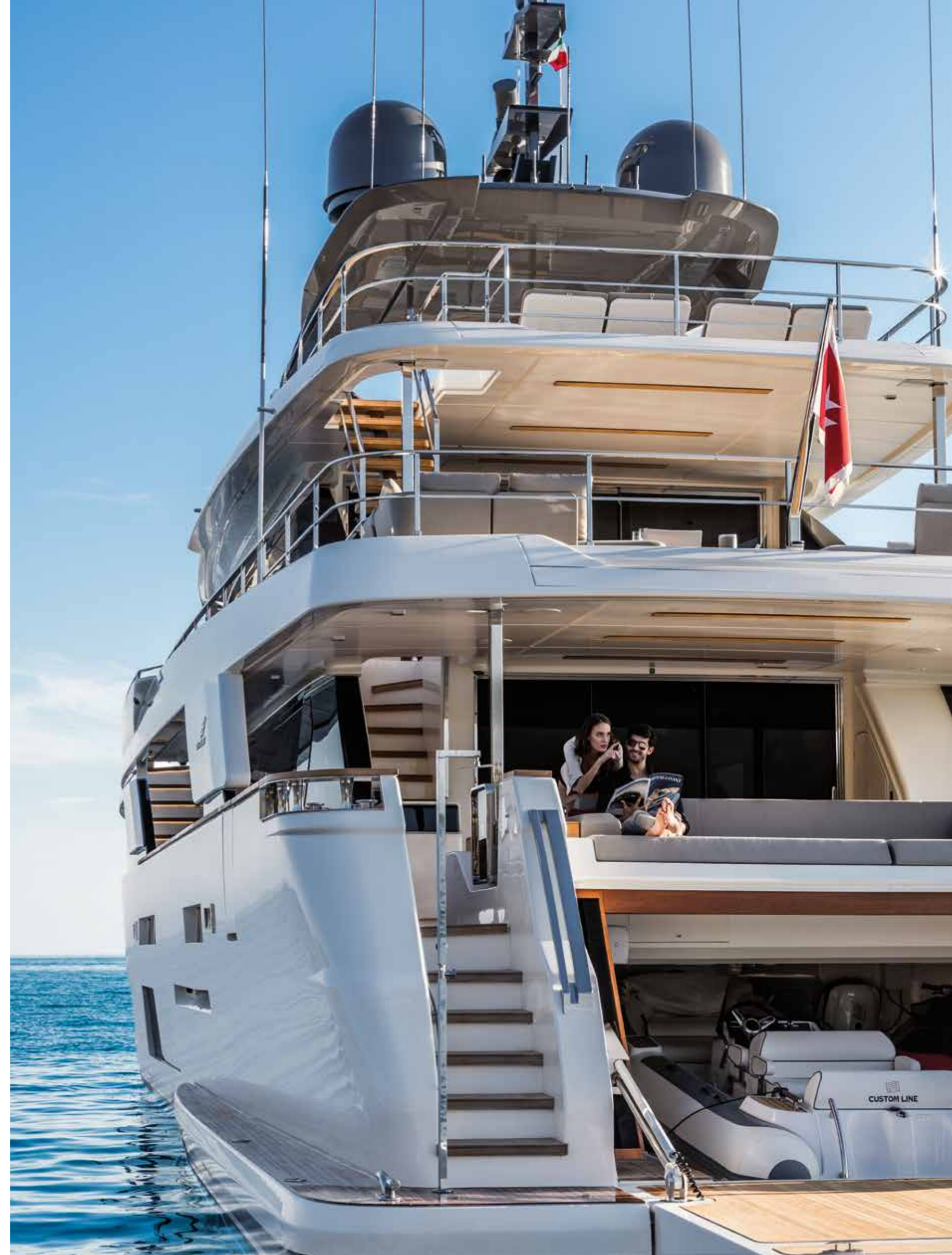
53

sqm

sundeck with hard top

Relax in style on the most
exclusive terrace on the sea.

Relish the **greatest show** on earth.





Key features

1

pull-down terrace extending over the sea

Luminous full-height

101_{sqm}

windows

2

garages

for a tender and optional jet ski

Your own private island,
wherever you please.

She is unique.

She is a true avant-garde masterpiece.







Some
people see
a line;

we see an amazing
composition.





Grand layouts

179 sqm

living areas

25,5 sqm

owner's suite

20 sqm

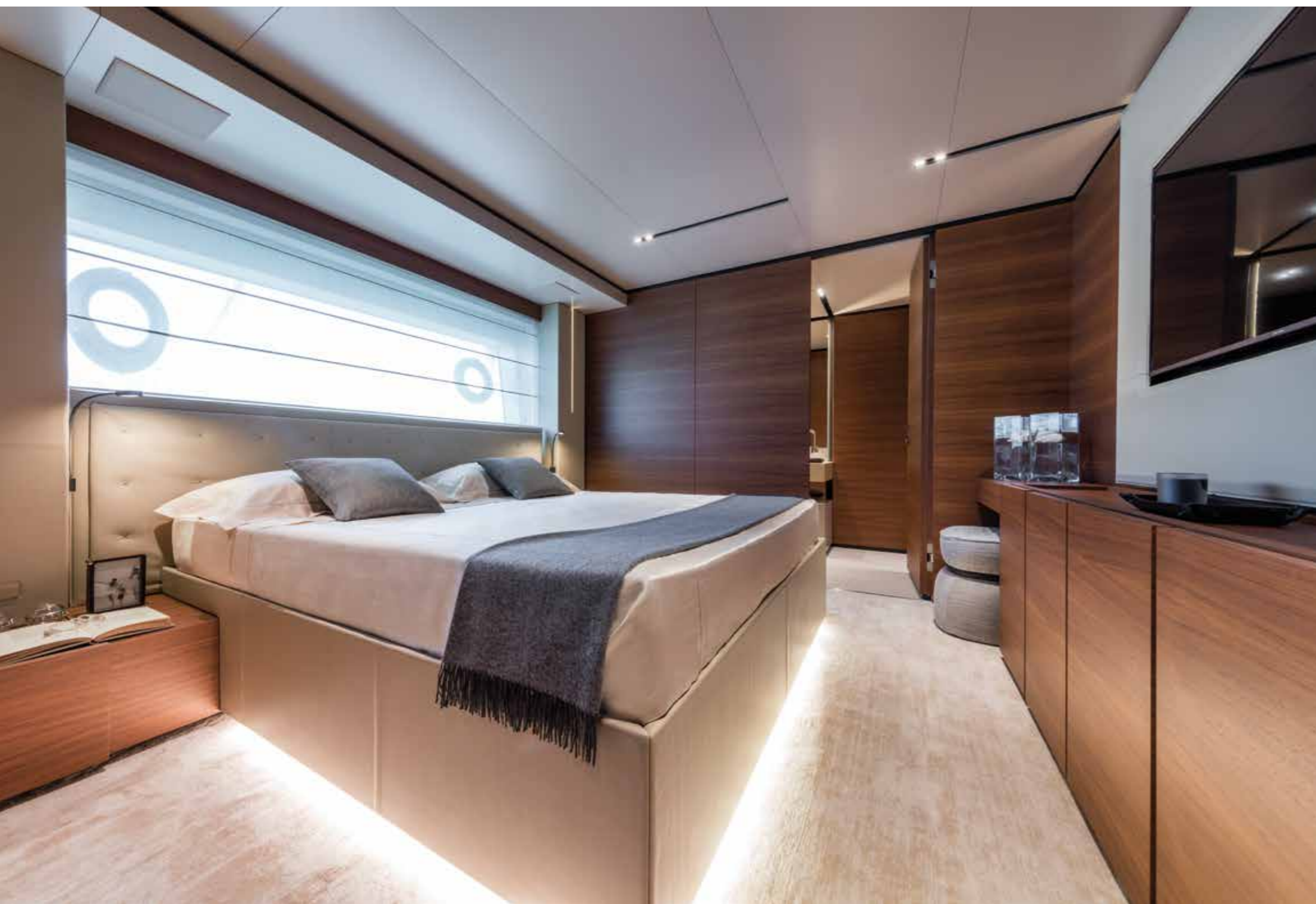
beach club

Born to cruise,
designed to shine.

Dive into
the **allure of cruising.**







New beauty,
inscribed upon the sea.







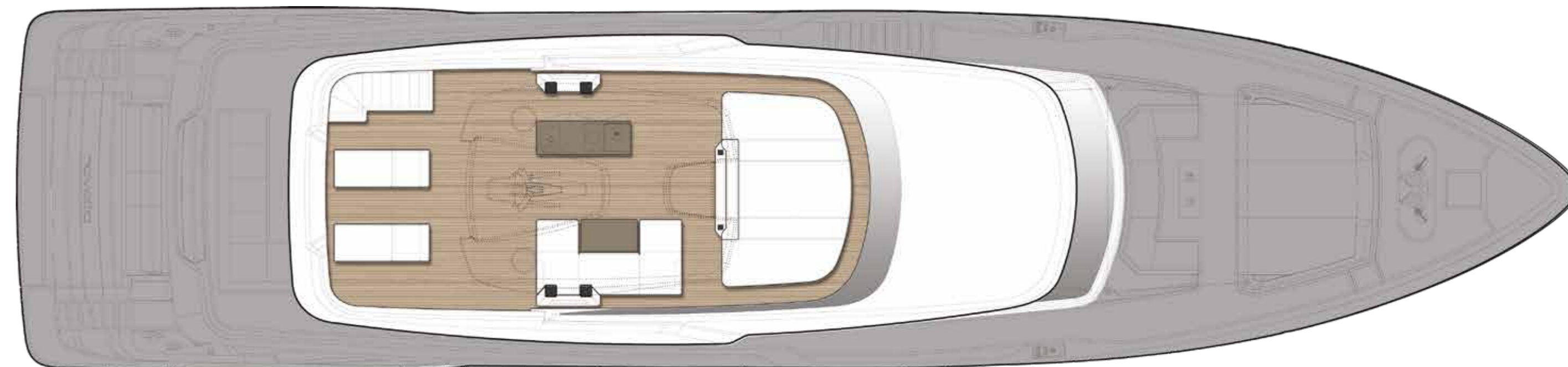
Custom Line **Navetta 33**
where your vision takes shape.



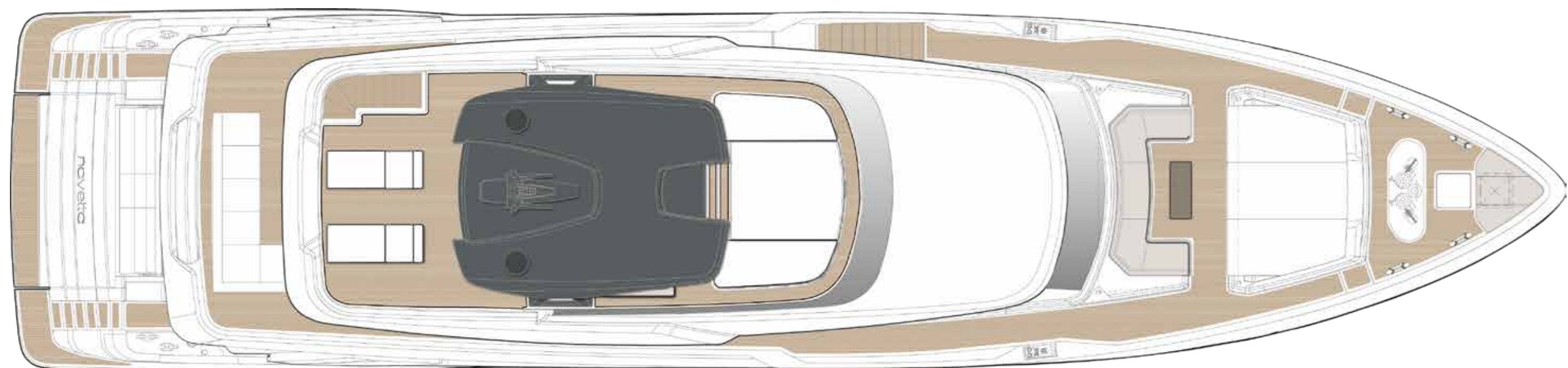
Profile



Sun deck



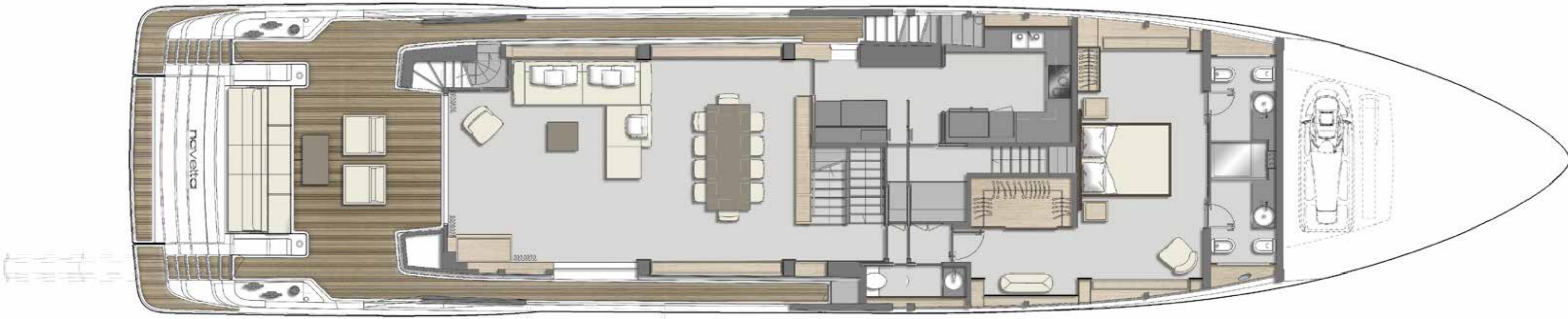
Top view



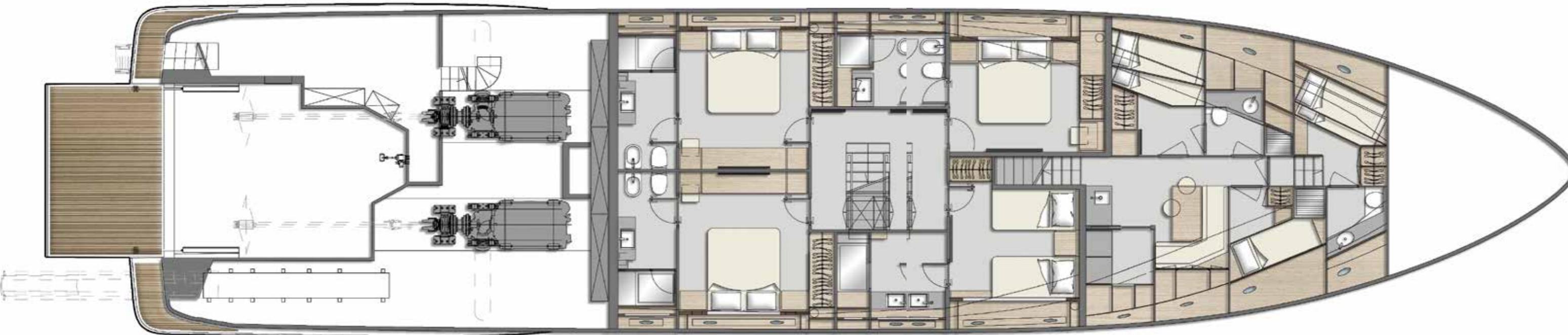
Upper deck



Main deck



Lower deck






FERRETTIGROUP

LEGAL NOTICE

1. This brochure does not constitute an offer by the shipyard to any person under any circumstances whatsoever, nor may it be incorporated into any contract.

2. All the information in this brochure, including without limitation all technical and performance data, illustrations and drawings, has no contractual effect. That information refers to European standard models of motor yachts built by the shipyard and is accurate at the brochure's date of issue. The only valid technical description or reference content for an individual motor yacht is the exact specification stated at the time of purchase. Therefore, the only information that is binding on the seller is that contained in the sale agreement and associated manual. This brochure is based on information available at the date of issue. Notwithstanding Ferretti Group's best efforts to ensure accuracy, the information in this brochure may not cover all details or subsequent changes, nor does it claim to accurately foresee or detail all possible scenarios. Displays, photos, diagrams, designs or examples in this brochure are reproduced solely and exclusively to highlight the information contained. Each yacht is different, so the shipyard declines any and all liability for any use thereof on the basis of the information in this brochure.

3. The brochure and its contents must not be copied or reproduced in their entirety or in part.

4. Sale of this brochure is not permitted.

Technical drawings:

Zuccon International Project
Ferretti Group Engineering

Concept and art direction:

Armando Testa

Photos:

Alberto Cocchi
Maurizio Paradisi
Breedmedia

FERRETTI GROUP SUPERYACHT YARD – CUSTOM LINE

Via Enrico Mattei, 26 · 60125 – Ancona, Italy

customline-yacht.com

CUSTOM LINE

BEYOND THE LINE