

# Navetta 37

**CUSTOM LINE**

# Navetta 37

**CUSTOM LINE**

BEYOND THE LINE

# Beyond the line.

Some people stop at the superficial;  
we strive to go beyond.

Because only those who cruise  
know where to find the sublime:  
Beyond the surface.

**Beyond the Line.**

See another sea with  
Custom Line **Navetta 37**.

A reflection of the owner's personality,  
she's more than a yacht;  
she's a unique masterpiece.  
Because cruising is an art.  
The art of being different.



Some  
people see  
a cut;



We see  
a vision of beauty.





## Dimensions

# 37,04

overall length

# 8

metres

maximum beam

# 4

decks

Navetta 37.

A triumph of design,  
with her sinuous,  
sophisticated lines.







**Leave your mark**  
on the endless canvas  
of the sea.





Cruising and travel,  
**made art** with  
your Navetta 37.



Some  
people see  
lines;



we see  
an amazing picture.



Where **cruising** and  
**dreaming** become one.  
One Line.







Feel the endless  
**joy of cruising.**



## Facts & Figures

# 2

MAN V12 1400 CR engines, developing

# 1400

Mhp

# 15,5

knots

maximum speed

# 12,5

knots

cruising speed

Savour our vision  
of dynamism and style.





Experience a unique sensation.  
Experience a **unique creation**.





**Some  
people see  
a mirror;**

we see an incredible painting.





A place to give free rein  
to your **imagination.**







**Beyond the bounds**  
of the horizon.



Amazing  
panoramic views

360°

Panorama

1

majestic sliding window in the dining room

58

sqm

sundeck with hard top

Admire your own  
private vista, every day.







Where the sun **never sets**.





Your own **private world**  
to savour and share.







Enjoy the art  
of **seeing beyond.**





## Key features

Luminous full-height

**110** sqm

windows

Generous

**476** sqm

on-board spaces, inside and out

Superb features  
for a magnificent  
cruising experience.



37 shades of **innovation.**





Some  
people see  
rectangles;



we see  
a work of art.



## Grand layouts:

**41** sqm

main salon

**31** sqm

owner's suite

**1**

fully equipped beach club  
with the ocean all around

Feel the pleasure  
of customizing your journey.





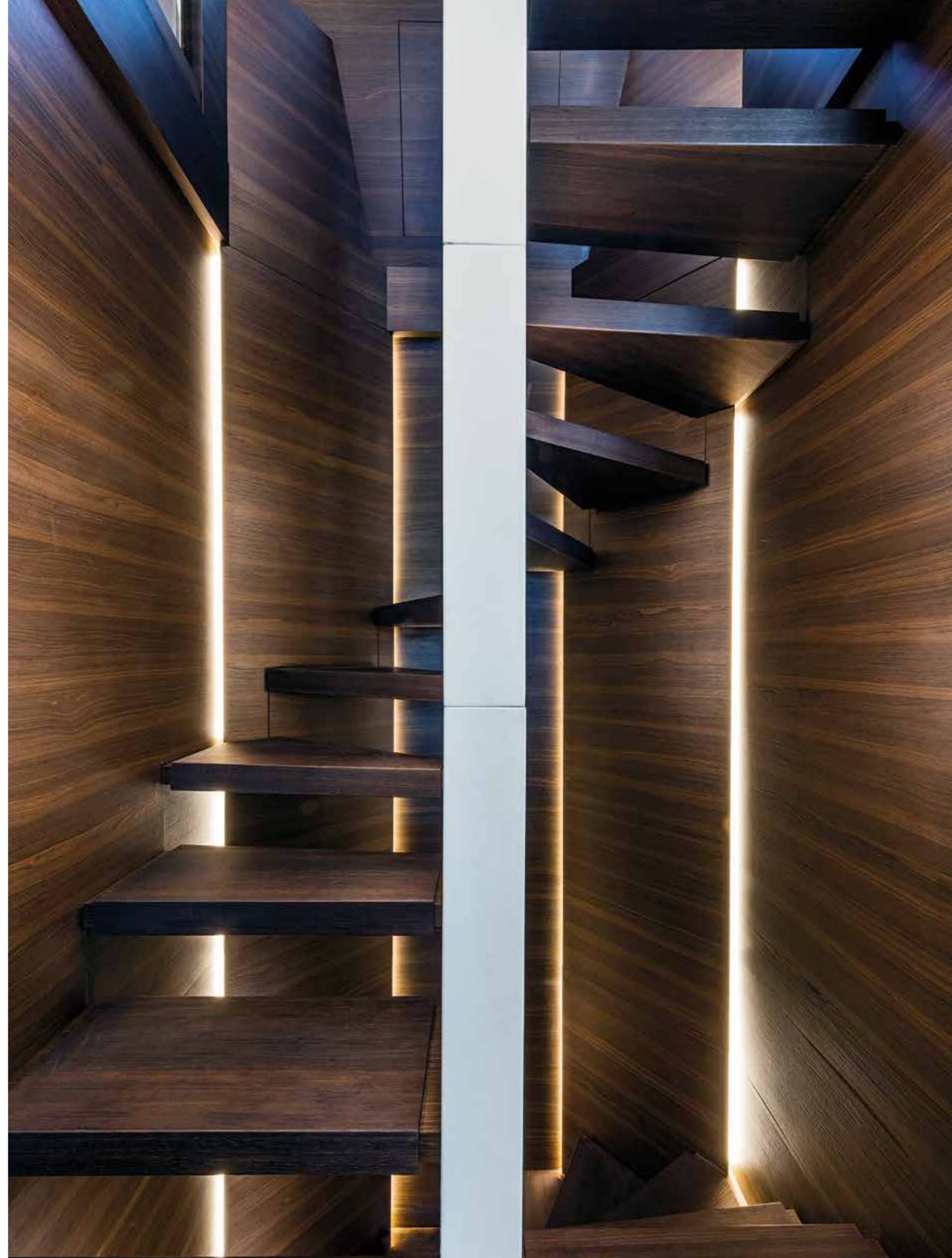
**Timeless style**  
for a timeless journey.





Spaces **inspired by you.**

Every facet of the gem  
**reflects you.**



A **marvel** of cruising comfort to revel in the infinity of the sea.





## Dati tecnici

## Technical data

## Datos técnicos

## Технические характеристики

## 技术规格

## البيانات الفنية

<b>MOTORIZZAZIONE</b>			<b>RATING (ORE MAX/ANNO)</b>	
2 x MAN V12 LE446 - 1400 CR potenza 1400 mhp / 1029 kW a 2300 rpm			std	<b>3000h</b>
2 x MAN V12 LE456 - 1650 CR potenza 1650 mhp / 1213 kW a 2300 rpm			opt	<b>1000h</b>
2 x BAUDOUIN M26.3 P4 - potenza 1650 mhp / 1213 kW a 2300 rpm			opt	<b>1000h</b>
2 x CAT C32 ACERT V12 - potenza 1622 mhp / 1193 kW a 2300 rpm			opt	<b>3000h</b>
<b>VELOCITA' (NODI) (rif. Specifiche di prestazione) (*)</b>	<b>MAN 1400</b>	<b>MAN 1650</b>	<b>Baudouin 1650</b>	<b>CAT 1622</b>
Velocità massima	15,5	16,5	16,5	16,5
Velocità di crociera (massima velocità continuativa)	12	12	12	12
<b>AUTONOMIA (MIGLIA NAUTICHE) (rif. Specifiche di prestazione) (*)</b>	<b>MAN 1400</b>	<b>MAN 1650</b>	<b>Baudouin 1650</b>	<b>CAT 1622</b>
Velocità massima di punta	1010	870	860	870
Velocità massima di crociera	2000	2000	1700	2000
Velocità di crociera economica (10 nodi)	3000	2700	2400	2650
<b>DIMENSIONI PRINCIPALI</b>				
Loa = Lunghezza fuori tutto ISO 8666		37,04	m/ft. in.	<b>121' 6"</b>
Lh = Lunghezza di costruzione ISO 8666		36,89	m/ft. in.	<b>121' 0"</b>
Lg = Lunghezza al galleggiamento (a pieno carico)		30,66	m/ft. in.	<b>100' 7"</b>
Larghezza massima		8,00	m/ft. in.	<b>26' 3"</b>
Immersione sotto le eliche (a pieno carico)		2,27	m/ft. in.	<b>7' 5"</b>
Dislocamento ad imbarcazione scarica e asciutta (*)		185	t/lb	<b>407855</b>
Dislocamento a pieno carico (*)		225	t/lb	<b>496040</b>
Numero massimo di persone imbarcabili				<b>20</b>
Certificazione				RINA S.p.A. ✳HULL, • MACH, Y, Unrestricted Navigation
<b>DATI CARATTERISTICI</b>				
Tipo di carena: semiplanante a spigolo e chiglia profonda				
H massima = Altezza massima dalla chiglia all'alberotto		11,80	m/ft. in.	<b>38' 9"</b>
H trasporto = Altezza minima per il trasporto dalla chiglia		9,61	m/ft. in.	<b>31' 6"</b>
P = sporgenza poppiera della plancetta		0,15	m/ft. in.	<b>0' 6"</b>
Capacità serbatoio carburante		32500	lt./US gals.	<b>8586</b>
Capacità serbatoi acqua		4000	lt./US gals.	<b>1057</b>
Capacità serbatoio acque nere		1500	lt./US gals.	<b>396</b>
Capacità serbatoio acque grigie		1500	lt./US gals.	<b>396</b>
<b>SPECIFICHE PRESTAZIONALI (*)</b>				
i dati prestazionali sono stabiliti al seguente dislocamento: e si riferiscono alla barca nella versione standard a 1/2 carico liquidi, con carena pulita, temp. 25° C, buone condizioni climatiche e 8 persone a bordo. sovraccaricando la barca di		203,8	t/lb	449201
si ha una perdita di velocità massima pari a		4,0 1	t/lb nodo	8818
Scafo e progettazione di propulsione: Ferretti Group Engineering. Progettazione di sovrastrutture e interni: Zuccon International Project.				(*) PRELIMINARE



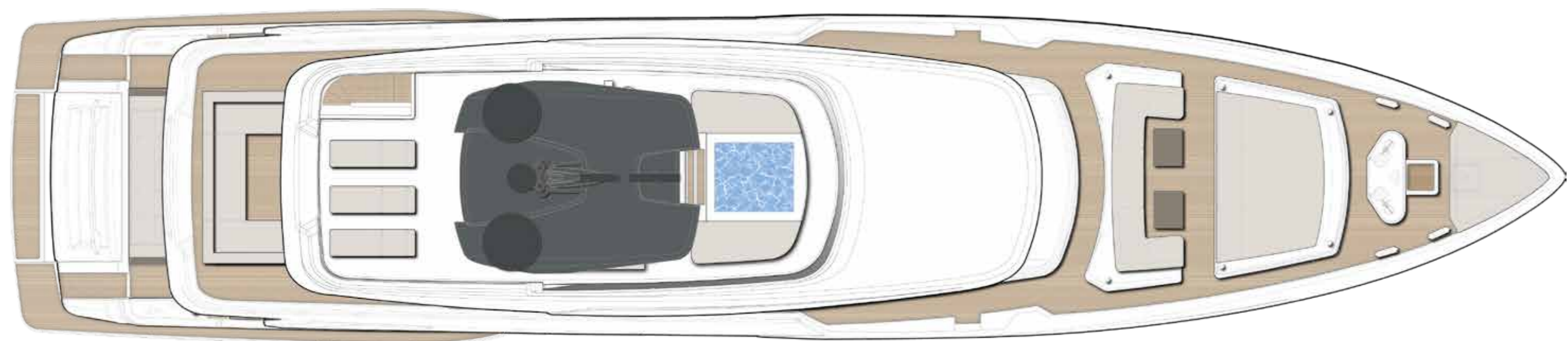
<b>ENGINES</b>			<b>RATING (YEAR MAX H)</b>	
2 x MAN V12 LE446 - 1400 CR power 1400 mhp / 1029 kW at 2300 rpm			std	<b>3000h</b>
2 x MAN V12 LE456 - 1650 CR power 1650 mhp / 1213 kW at 2300 rpm			opt	<b>1000h</b>
2 x BAUDOUIN M26.3 P4 - power 1650 mhp / 1213 kW at 2300 rpm			opt	<b>1000h</b>
2 x CAT ACERT C32 V12 - power 1622 mhp / 1193 kW at 2300 rpm			opt	<b>3000h</b>
<b>SPEED (KNOTS) (ref. Performance Specifications) (*)</b>	<b>MAN 1400</b>	<b>MAN 1650</b>	<b>Baudouin 1650</b>	<b>CAT 1622</b>
Maximum speed	15,5	16,5	16,5	16,5
Cruising speed (max continuous speed)	12	12	12	12
<b>RANGE (NAUTICAL MILES) (ref. Performance Specifications) (*)</b>	<b>MAN 1400</b>	<b>MAN 1650</b>	<b>Baudouin 1650</b>	<b>CAT 1622</b>
Maximum speed	1010	870	860	870
Cruising speed	2000	2000	1700	2000
Economic cruising speed (10 knots)	3000	2700	2400	2650
<b>MAIN SIZES</b>				
Loa = Overall length (standard ISO 8666)		37,04	m/ft. in.	<b>121' 6"</b>
Lh = Hull length (standard ISO 8666)		36,89	m/ft. in.	<b>121' 0"</b>
Lwl = Waterline length (boat fully laden)		30,66	m/ft. in.	<b>100' 7"</b>
Maximum beam		8,00	m/ft. in.	<b>26' 3"</b>
Depth under propellers (boat fully laden)		2,27	m/ft. in.	<b>7' 5"</b>
Displacement unladen (*)		185	t/lb	<b>407855</b>
Displacement laden (*)		225	t/lb	<b>496040</b>
Maximum number of persons on board				<b>20</b>
Certification				RINA S.p.A. ✳HULL, • MACH, Y, Unrestricted Navigation
<b>TECHNICAL DATA</b>				
Hull type: semidisplacement hull with hard chine and deep keel				
H = Overall height from keel to radar arch		11,80	m/ft. in.	<b>38' 9"</b>
Ht = Minimum transport height from keel		9,61	m/ft. in.	<b>31' 6"</b>
P = swim platform		0,15	m/ft. in.	<b>0' 6"</b>
Fuel tank capacity		32500	lt./US gals.	<b>8586</b>
Water tanks capacity		4000	lt./US gals.	<b>1057</b>
Black water tank capacity		1500	lt./US gals.	<b>396</b>
Grey water tank capacity		1500	lt./US gals.	<b>396</b>
<b>PERFORMANCE SPECIFICATIONS (*)</b>				
The performance is estimated at the following conditions: standard version displacement of the yacht; at half liquid load, clean hull, 25° C air temperature, good weather conditions, 8 persons on board		203,8	t/lb	449201
Overloading the yacht by		4,0	t/lb	8818
top speed decreases of		1	knot	
Hull and propulsion design: Ferretti Group Engineering. Superstructure and Interiors design: Zuccon International Project.				(*) PRELIMINARY



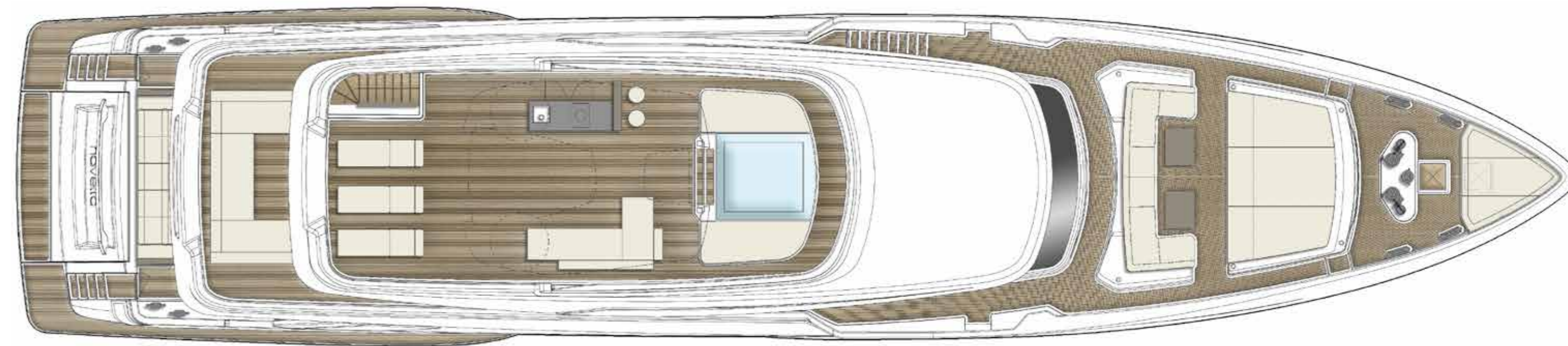
Profile



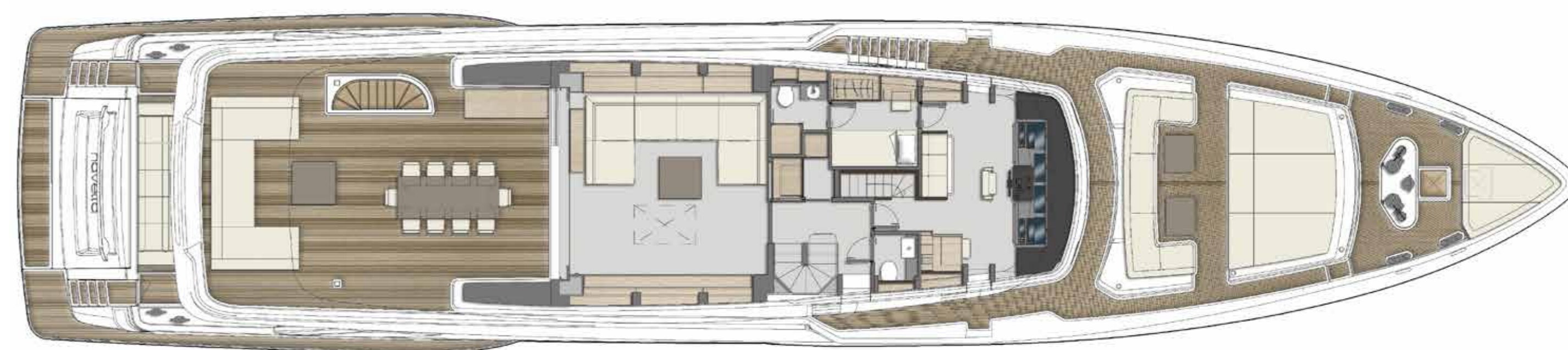
Top view



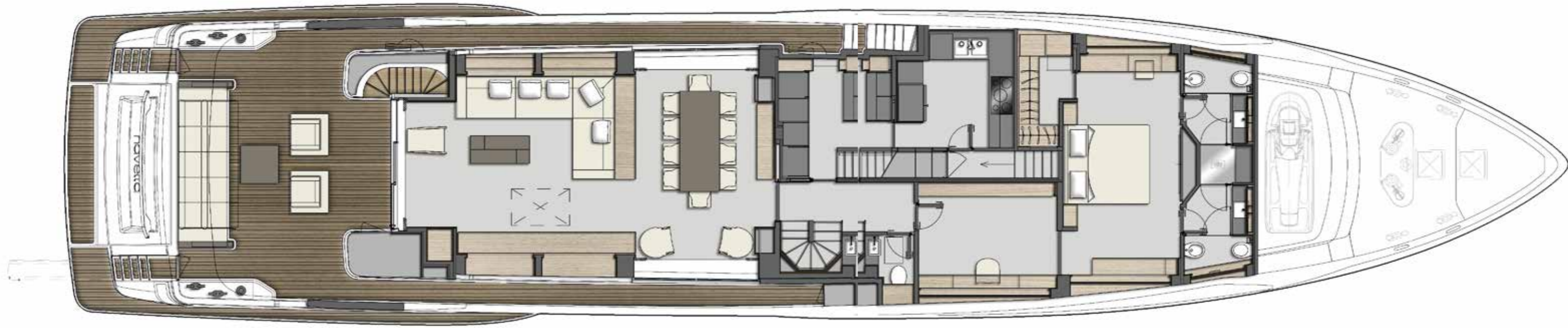
Sun deck



Upper deck



Main deck



Lower deck





  
FERRETTIGROUP

## LEGAL NOTICE

1. This brochure does not constitute an offer by the shipyard to any person under any circumstances whatsoever, nor may it be incorporated into any contract.

2. All the information in this brochure, including without limitation all technical and performance data, illustrations and drawings, has no contractual effect. That information refers to European standard models of motor yachts built by the shipyard and is accurate at the brochure's date of issue. The only valid technical description or reference content for an individual motor yacht is the exact specification stated at the time of purchase. Therefore, the only information that is binding on the seller is that contained in the sale agreement and associated manual. This brochure is based on information available at the date of issue. Notwithstanding Ferretti Group's best efforts to ensure accuracy, the information in this brochure may not cover all details or subsequent changes, nor does it claim to accurately foresee or detail all possible scenarios. Displays, photos, diagrams, designs or examples in this brochure are reproduced solely and exclusively to highlight the information contained. Each yacht is different, so the shipyard declines any and all liability for any use thereof on the basis of the information in this brochure.

3. The brochure and its contents must not be copied or reproduced in their entirety or in part.

4. Sale of this brochure is not permitted.

### Technical drawings:

Zuccon International Project  
Ferretti Group Engineering

### Concept and art direction:

Armando Testa

### Photos:

Alberto Cocchi

### FERRETTI GROUP SUPERYACHT YARD – CUSTOM LINE

Via Enrico Mattei, 26 · 60125 – Ancona, Italy

customline-yacht.com

**CUSTOM LINE**

---

BEYOND THE LINE