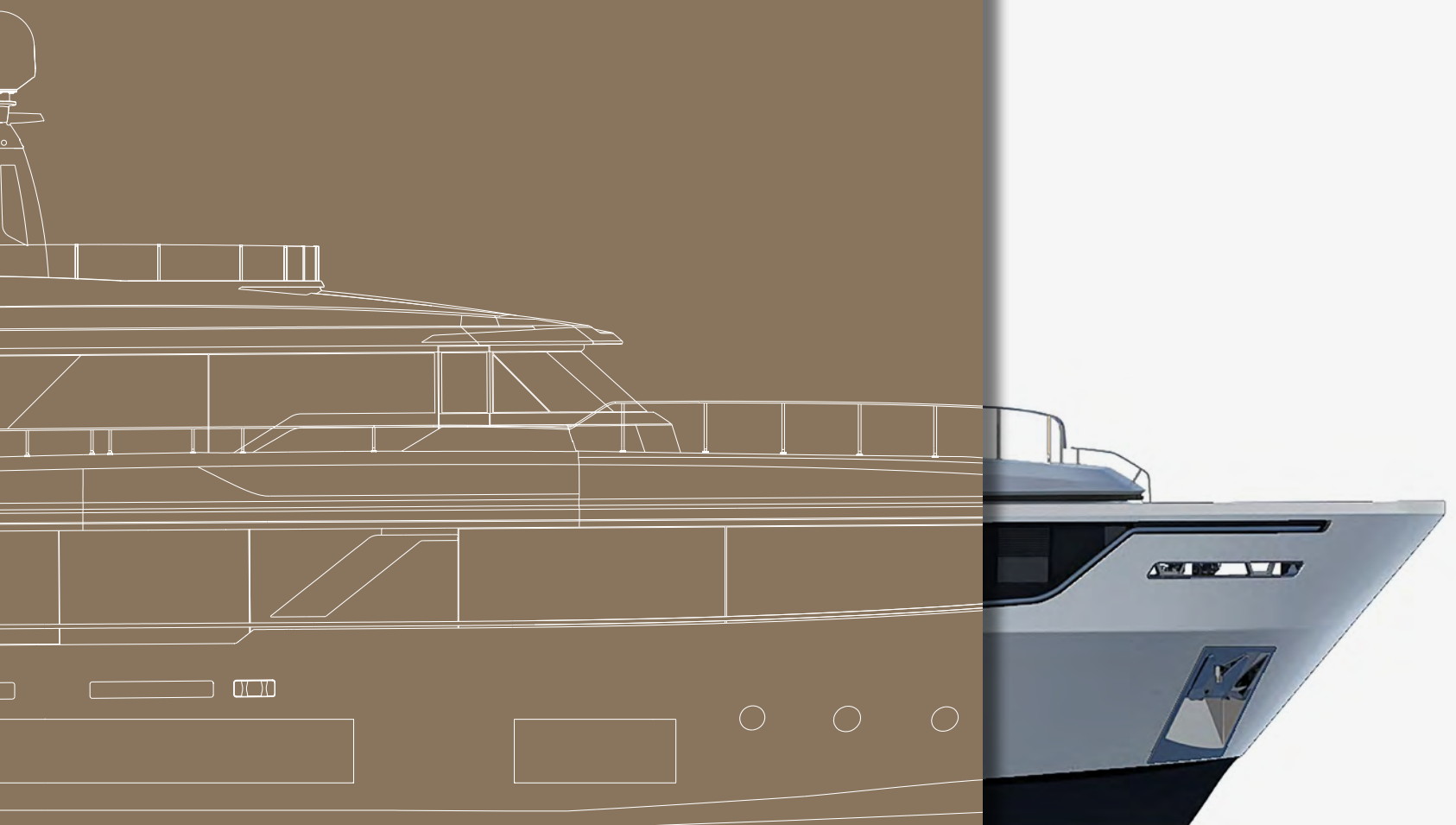


Navetta 30

Project



CUSTOM LINE



CUSTOM LINE

Beyond the line.

Some people stop
at the superficial;
we strive to go beyond.
Because only those
who cruise know
where to find the sublime:
Beyond the surface.
Beyond the Line.

See another sea
with the **Navetta 30**.
A reflection of
the owner's personality,
she's more than
a yacht; she's a unique
masterpiece.
Because cruising
is an art.
The art of being
different.



**Some
people see
fragments;**



we see
a unique
work of art.







There's a genius to cruising.
Each voyage becomes
a masterwork.

Speed

15 knots

maximum speed

13 knots

cruising speed



The classic yachting tradition reinterpreted in contemporary vein: the new Navetta 30 concept.

Some
people see
shapes;



we see
the shape of things
to come.



Outdoor and indoor interior design

4

Decks

282

sqm

of total living space

56

sqm

of indoor lounge areas

24

sqm

of space in the owner's suite

Four decks and
unprecedented space
for the new entry-level
displacement yacht.





A continuity of **sophisticated interior spaces** and ample outdoor areas. A dialogue conjuring up new horizons of convivial good living with intimate privacy.







Picturing a space is **an act of creation**; being there in it is a real experience.







A considered blend of **naval engineering, aesthetic discipline, and timeless style.**





The interior concept is steeped in echoes of the sea. Beauty and wellbeing suffuse **every exquisite detail that an owner could desire.**

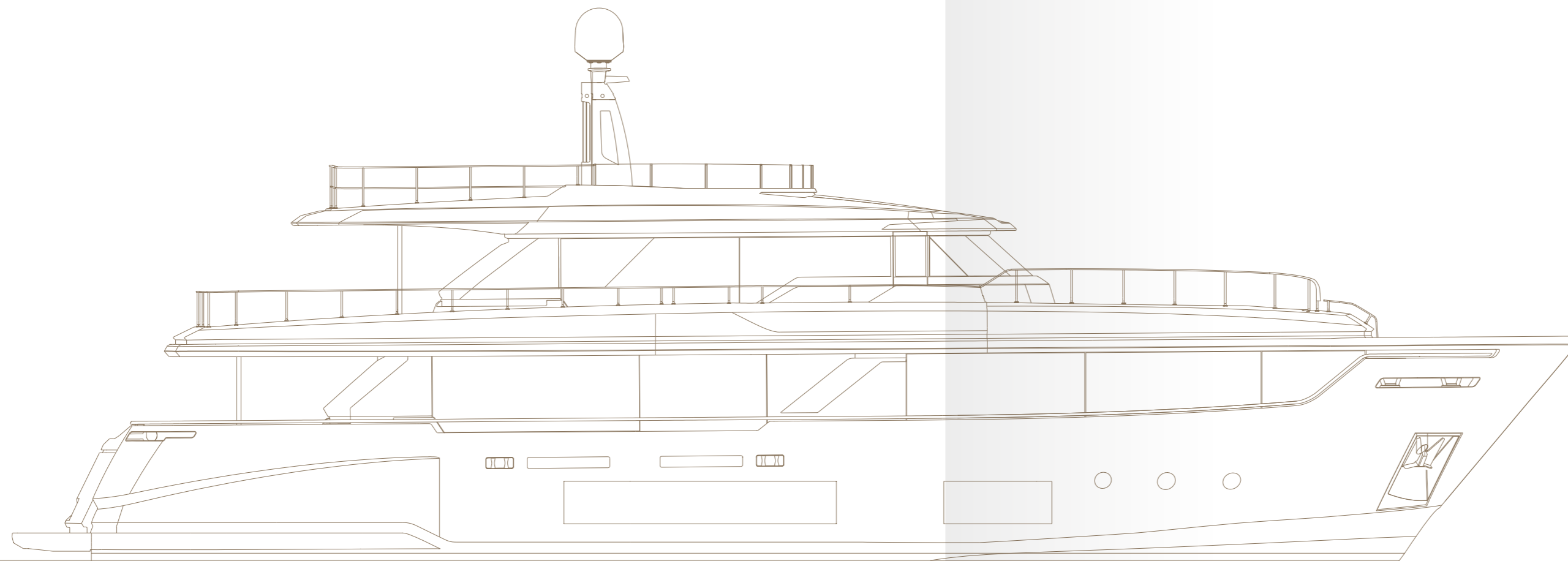


The intimacy of the spaces reveals a subtle harmony, as **the energy of an idea inspires a sensational work of art.**

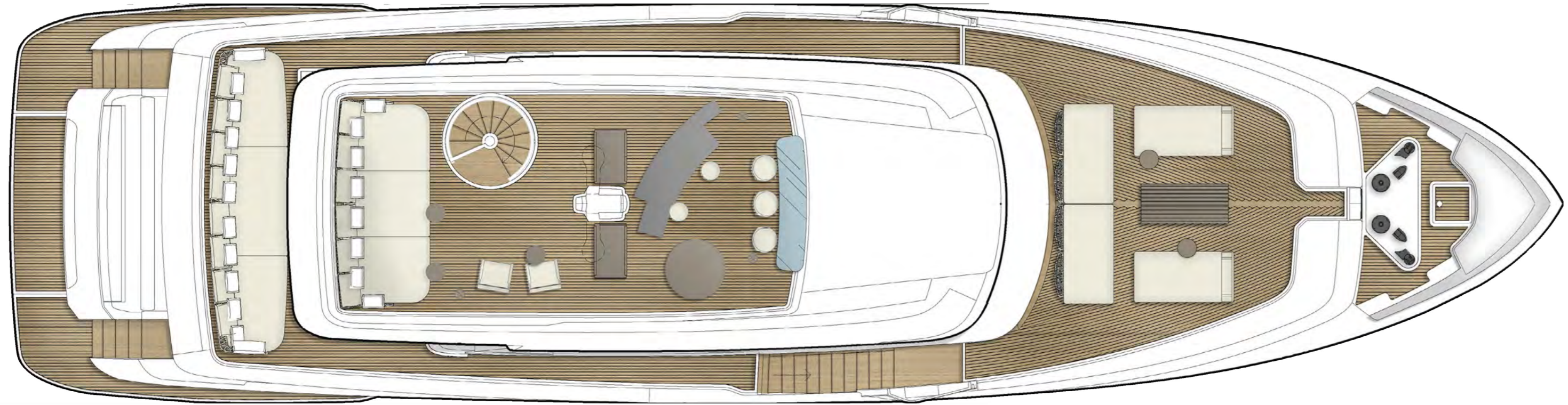




Navetta 30
Project



Sun deck



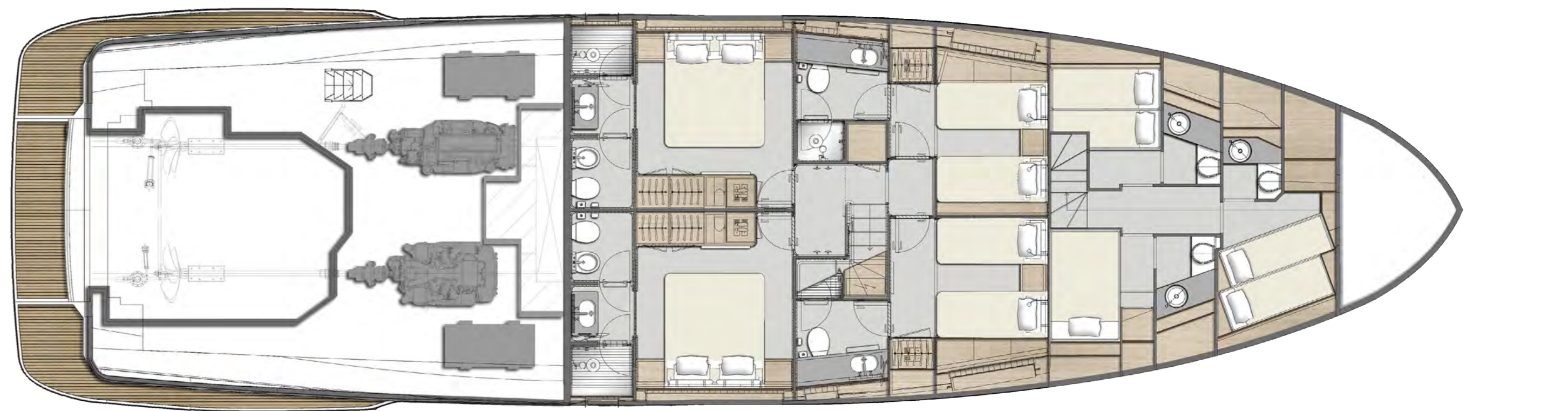
Main deck



Upper deck



Lower deck



Specifiche tecniche

Preliminary

1 MOTORIZZAZIONE					
2 x Man i6 – 800 CR potenza 800 mhp / 588 kW a 2300 giri/min					std
2 x Man V8 – 1000 potenza 1000 mhp / 735 kW a 2300 giri/min					opt
2 x CAT C18-1150 potenza 1150 mhp / 847 kW a 2300 giri/min					opt
2 x Man V8 – 1200 potenza 1200 mhp / 882 kW a 2300 giri/min					opt
2 VELOCITÀ (nodi) <small>(rif cap. 6)</small>					
	Man 800	Man 1000	Cat 1150		Man 1200
Velocità massima	14	14,5	15	nodi	15
Velocità di crociera	13	13	13	nodi	13
Velocità di crociera economica	10	10	10	nodi	10
3 AUTONOMIA (miglia nautiche) <small>(rif cap. 6)</small>					
	Man 800	Man 1000	Cat 1150		Man 1200
Velocità massima	600	500	450	m.n.	450
Velocità di crociera	850	850	800	m.n.	850
Velocità di crociera economica	2150	2150	2050	m.n.	2100
4 DIMENSIONI PRINCIPALI					
Loa = Lunghezza fuori tutto ISO 8666	28.43			m.	93 ft. 3 in.
Lh = Lunghezza di costruzione ISO 8666	23.98			m.	78 ft. 8 in.
Lg = Lunghezza al galleggiamento (a pieno carico)	23.85			m.	78 ft. 3 in.
Larghezza massima (compresi bottazzi)	7.31			m.	24 ft. 0 in.
Immersione sotto le eliche (a pieno carico)	2.20			m.	7 ft. 3 in.
Dislocamento ad imbarcazione scarica e asciutta	116			ton./lb	255736
Dislocamento a pieno carico	136			ton./lb	299829
Numero massimo di persone imbarcabili	20				
Categoria di progettazione Direttiva 2013/53/EU	A				
Certificazione moduli	B + F + Aa (sound emission)				RINA S.p.A.
5 DATI CARATTERISTICI					
Tipo di carena: Semidislocante soft-chine					
H massima = Altezza massima dalla chiglia all'alberotto antenne	11.78			m.	38 ft. 8 in.
H trasporto = Altezza minima per il trasporto dalla chiglia	8.91			m.	29 ft. 3 in.
P = Sporgenze di prua e di poppa	4.45			m.	14 ft. 7 in.
Capacità serbatoio carburante	14500			lt./US gals.	3830
Capacità serbatoi acqua	2500			lt./US gals.	660
6 SPECIFICHE PRESTAZIONALI					
I dati prestazionali sono stabiliti al seguente dislocamento: e si riferiscono alla barca standard a 1/2 carico liquidi, con carena pulita, temp. 25° C, buone condizioni climatiche e 8 persone a bordo	124,1			ton./lb.	273682
Sovraccaricando la barca di: si ha una perdita di velocità massima pari a:	3,00 1			ton./lb. nodo	6614 6614

Technical specifications

Preliminary

1 ENGINES					
2 x MAN i6 800 power 800 mhp / 588 kW at 2300 rpm					std
2 x MAN V8 1000 power 1000 mhp / 735 kW at 2300 rpm					opt
2 x CAT C18 1150 power 1150 mhp / 847 kW at 2300 rpm					opt
2 x MAN V8 1200 power 1200 mhp / 882 kW at 2300 rpm					opt
2 SPEED (knots) <small>(ref cap. 6)</small>					
	Man 800	Man 1000	Cat 1150		Man 1200
Maximum speed	14	14,5	15	knots	15
Cruising speed	13	13	13	knots	13
Economic cruising speed	10	10	10	knots	10
3 RANGE (nautical miles) <small>(ref cap. 6)</small>					
	Man 800	Man 1000	Cat 1150		Man 1200
Maximum speed	600	500	450	m.n.	450
Cruising speed	850	850	800	m.n.	850
Economic cruising speed	2150	2150	2050	m.n.	2100
4 MAIN SIZES					
Loa = overall length (standard ISO 8666)	28.43			m.	93 ft. 3 in.
Lh = Hull length (standard ISO 8666)	23.98			m.	78 ft. 8 in.
Lwl = waterline length (boat fully laden)	23.85			m.	78 ft. 3 in.
Maximum beam	7.31			m.	24 ft. 0 in.
Depth under propellers (boat fully laden)	2.20			m.	7 ft. 3 in.
Displacement unladen	116			ton./lb	255736
Displacement laden	136			ton./lb	299829
Maximum number of persons on board	20				
Design category Directive 2013/53/EU	A				
Certification modules	B + F + Aa (sound emission)				RINA S.p.A.
5 TECHNICAL DATA					
Hull type: semi-displacement with soft-chine					
H = Overall height from keel to antennas mast	11.78			m.	38 ft. 8 in.
Ht = Minimum transport height from keel	8.91			m.	29 ft. 3 in.
P = Bow and stern protrusions	4.45			m.	14 ft. 7 in.
Fuel tank capacity	14500			lt./US gals.	3830
Water tanks capacity	2500			lt./US gals.	660
6 PERFORMANCE SPECIFICATIONS					
the performance is estimated at the following conditions: standard version displacement of the yacht at half liquid load, clean hull, 25°C air temperature good weather conditions, 8 persons on board	124,1			ton./lb.	273682
overloading the yacht by: top speed decreases of:	3,00 1			ton./lb. knot	6614 6614




FERRETTIGROUP

LEGAL NOTICE

1. This brochure does not constitute an offer by the shipyard to any person under any circumstances whatsoever, nor may it be incorporated into any contract.

2. All the information in this brochure, including without limitation all technical and performance data, illustrations and drawings, has no contractual effect. That information refers to European standard models of motor yachts built by the shipyard and is accurate at the brochure's date of issue. The only valid technical description or reference content for an individual motor yacht is the exact specification stated at the time of purchase. Therefore, the only information that is binding on the seller is that contained in the sale agreement and associated manual. This brochure is based on information available at the date of issue. Notwithstanding Ferretti Group's best efforts to ensure accuracy, the information in this brochure may not cover all details or subsequent changes, nor does it claim to accurately foresee or detail all possible scenarios. Displays, photos, diagrams, designs or examples in this brochure are reproduced solely and exclusively to highlight the information contained. Each yacht is different, so the shipyard declines any and all liability for any use thereof on the basis of the information in this brochure.

3. The brochure and its contents must not be copied or reproduced in their entirety or in part.

4. Sale of this brochure is not permitted.

Technical drawings & renderings:

Ferretti Group Engineering
Filippo Salvetti
Antonio Citterio Patricia Viel

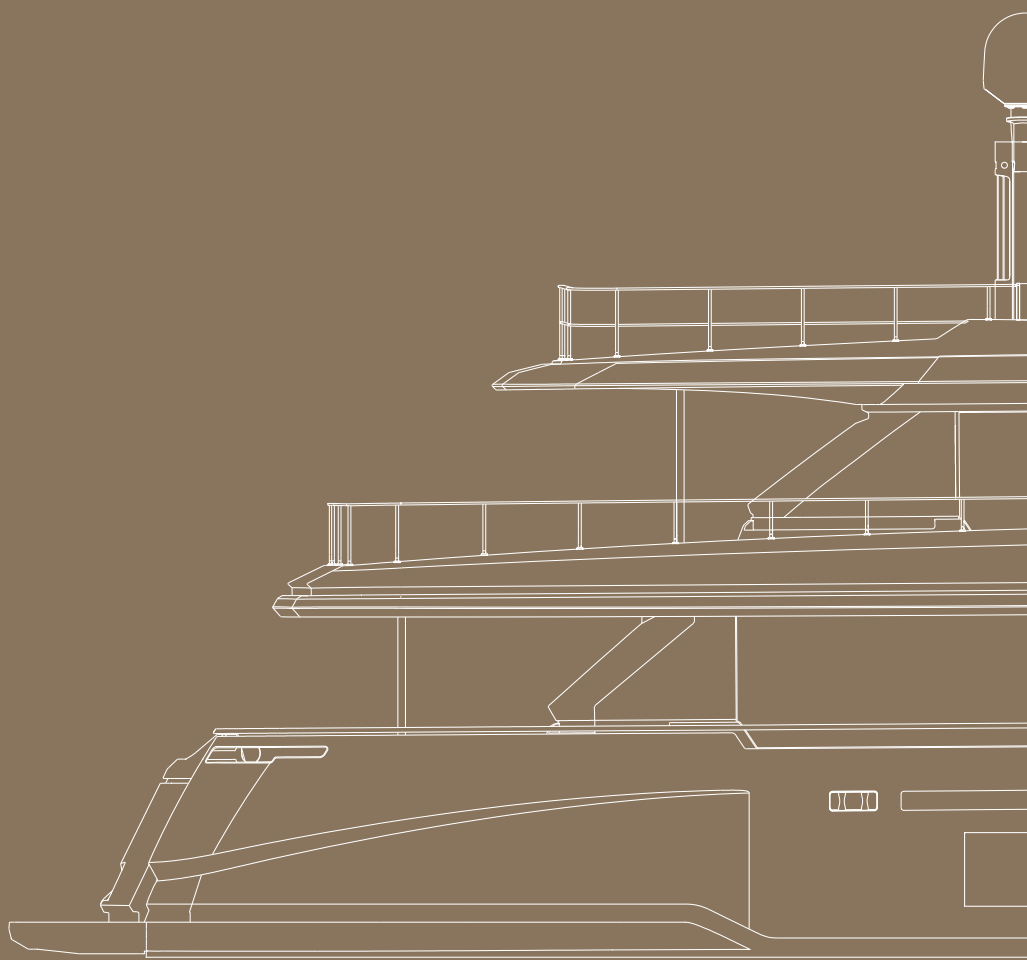
Concept and art direction:

Armando Testa

FERRETTI GROUP SUPERYACHT YARD – CUSTOM LINE

Via Enrico Mattei, 26 · 60125 – Ancona, Italy

customline-yacht.com



CUSTOM LINE

BEYOND THE LINE